

## 4 Major Parts of Your PSAT/NMSQT Results

# Understanding Your PSAT/NMSQT Results

Your Scores

Your Skills

Your Answers

Next Steps

## 3 Test Sections

Critical Reading

Mathematics

Writing Skills

The image shows a sample PSAT/NMSQT score report page. At the top, three score bubbles are visible with scores 30, 32, and 44. Below these are four orange callout boxes: 'Your Scores', 'Your Skills', 'Your Answers', and 'Next Steps'. A larger orange callout box labeled '3 Test Sections' points to a table of scores for three sections: Critical Reading, Mathematics, and Writing Skills. Below this table are three more orange callout boxes: 'Critical Reading', 'Mathematics', and 'Writing Skills'. At the bottom of the page, there is a 'Next Steps' section with text and a 'Take the next step today!' call to action, along with the 'Online Access Code' A02670146P.

Section Scores Also see your projected SAT® scores at [www.collegeboard.org](http://www.collegeboard.org)

30 32 44

**Your Scores**

**Your Skills**

**Your Answers**

**Next Steps**

Log in to your account and sign in using your code below.

Online Access Code  
**A02670146P**

Section	Score	Percentile
Critical Reading	30	42
Mathematics	32	48
Writing Skills	44	85

**3 Test Sections**

Section	Score	Percentile
Critical Reading	30	42
Mathematics	32	48
Writing Skills	44	85

**Critical Reading**

**Mathematics**

**Writing Skills**

Answers  
See test questions and review

**Next Steps**

Most students take the SAT in May or June of their junior year. The good news is that the PSAT/NMSQT is a great way to get ready for the SAT — so you are ready for the next step! You can register and practice for the SAT at [www.collegeboard.org/sat](http://www.collegeboard.org/sat).

On test day, you told us that you're interested in **Sport & Fitness Administration/Management**. To learn more about college majors, visit My College QuickStart™. There you can also:

- Learn about related careers
- Search for colleges
- Take a personality test!

Take the next step today! Go to [www.collegeboard.org/quickstart](http://www.collegeboard.org/quickstart) and sign in using your code below.

Online Access Code  
**A02670146P**

# Your Scores

## Score

You can see your projected SAT score online in My College QuickStart ([www.collegeboard.org/quickstart](http://www.collegeboard.org/quickstart)).

## Score Range

## Percentile

If you are a junior, your scores are compared to those of other juniors.

If you are a sophomore or younger student, your scores are compared to those of sophomores.

Name: STUDENT, IMA B Year: 2012 Grade: 11 School Code: 123456 Optional Code: 00 Student Copy

# Critical Reading

## 50

20 80

46 to 54

You scored higher than **55%** of juniors.

You can also ask your counselor for a copy of your test book back so you can review the questions.

<p><b>Key</b></p> <p>✓ Correct    ✗ Wrong</p> <p>○ Unfilled    m Missed</p> <p>△ Incorrect    h Hint</p>	<p><b>Scoring</b></p> <p>• Correct answer = 1 POINT</p> <p>• Unfilled answer = 0 POINTS</p> <p>• Wrong answer to multiple-choice question = MINUS 1/4 POINT</p> <p>• Wrong answer to math question = 25% of 1 POINT</p> <p>• Points are added, then converted to scores on the 20-80 scale.</p>	<table border="0" style="width: 100%; border-collapse: collapse;"> <tr><td>6 C ✓ m</td><td>h</td><td>20 A ✓ m</td><td>h</td></tr> <tr><td>7 B ✓ m</td><td>h</td><td>21 C ✓ m</td><td>h</td></tr> <tr><td>8 D ✓ m</td><td>h</td><td>22 E ✓ m</td><td>h</td></tr> <tr><td>9 B ✓ m</td><td>h</td><td>23 A ✓ m</td><td>h</td></tr> <tr><td>10 E ✓ m</td><td>h</td><td>24 D ✓ m</td><td>h</td></tr> <tr><td>11 D ✓ m</td><td>h</td><td>25 A ✓ m</td><td>h</td></tr> <tr><td>12 C ✓ m</td><td>h</td><td>26 E ✓ m</td><td>h</td></tr> <tr><td>13 A ✓ m</td><td>h</td><td>27 C ✓ m</td><td>h</td></tr> <tr><td>14 B ✓ m</td><td>h</td><td>28 B ✓ m</td><td>h</td></tr> <tr><td>15 A ✓ m</td><td>h</td><td>29 B ✓ m</td><td>h</td></tr> <tr><td>16 C ✓ m</td><td>h</td><td>30 C ✓ m</td><td>h</td></tr> <tr><td>17 A ✓ m</td><td>h</td><td>31 B ✓ m</td><td>h</td></tr> <tr><td>18 E ✓ m</td><td>h</td><td>32 C ✓ m</td><td>h</td></tr> <tr><td>19 B ✓ m</td><td>h</td><td>33 E ✓ m</td><td>h</td></tr> <tr><td>20 B ✓ m</td><td>h</td><td>34 C ✓ m</td><td>h</td></tr> <tr><td>21 E ✓ m</td><td>h</td><td>35 D ✓ m</td><td>h</td></tr> <tr><td>22 D ✓ m</td><td>h</td><td>36 A ✓ m</td><td>h</td></tr> <tr><td>23 E ✓ m</td><td>h</td><td>37 C ✓ m</td><td>h</td></tr> <tr><td>24 A ✓ m</td><td>h</td><td>38 E ✓ m</td><td>h</td></tr> </table>	6 C ✓ m	h	20 A ✓ m	h	7 B ✓ m	h	21 C ✓ m	h	8 D ✓ m	h	22 E ✓ m	h	9 B ✓ m	h	23 A ✓ m	h	10 E ✓ m	h	24 D ✓ m	h	11 D ✓ m	h	25 A ✓ m	h	12 C ✓ m	h	26 E ✓ m	h	13 A ✓ m	h	27 C ✓ m	h	14 B ✓ m	h	28 B ✓ m	h	15 A ✓ m	h	29 B ✓ m	h	16 C ✓ m	h	30 C ✓ m	h	17 A ✓ m	h	31 B ✓ m	h	18 E ✓ m	h	32 C ✓ m	h	19 B ✓ m	h	33 E ✓ m	h	20 B ✓ m	h	34 C ✓ m	h	21 E ✓ m	h	35 D ✓ m	h	22 D ✓ m	h	36 A ✓ m	h	23 E ✓ m	h	37 C ✓ m	h	24 A ✓ m	h	38 E ✓ m	h	<table border="0" style="width: 100%; border-collapse: collapse;"> <tr><td>4 C ✓ m</td><td>h</td><td>10 E ✓ m</td><td>h</td></tr> <tr><td>5 B ✓ m</td><td>h</td><td>16 D ✓ m</td><td>h</td></tr> <tr><td>6 B ✓ m</td><td>h</td><td>20 D ✓ m</td><td>h</td></tr> <tr><td>7 C ✓ m</td><td>h</td><td>21 B ✓ m</td><td>h</td></tr> <tr><td>8 A ✓ m</td><td>h</td><td>22 C ✓ m</td><td>h</td></tr> <tr><td>9 B ✓ m</td><td>h</td><td>23 A ✓ m</td><td>h</td></tr> <tr><td>10 C ✓ m</td><td>h</td><td>24 D ✓ m</td><td>h</td></tr> <tr><td>11 B ✓ m</td><td>h</td><td>25 B ✓ m</td><td>h</td></tr> <tr><td>12 C ✓ m</td><td>h</td><td>26 D ✓ m</td><td>h</td></tr> <tr><td>13 B ✓ m</td><td>h</td><td>27 C ✓ m</td><td>h</td></tr> <tr><td>14 A ✓ m</td><td>h</td><td>28 A ✓ m</td><td>h</td></tr> <tr><td>15 E ✓ m</td><td>h</td><td>29 A ✓ m</td><td>h</td></tr> <tr><td>16 D ✓ m</td><td>h</td><td>30 B ✓ m</td><td>h</td></tr> <tr><td>17 C ✓ m</td><td>h</td><td>31 E ✓ m</td><td>h</td></tr> <tr><td>18 A ✓ m</td><td>h</td><td>32 B ✓ m</td><td>h</td></tr> <tr><td>19 C ✓ m</td><td>h</td><td>33 E ✓ m</td><td>h</td></tr> <tr><td>20 E ✓ m</td><td>h</td><td>34 C ✓ m</td><td>h</td></tr> <tr><td>21 B ✓ m</td><td>h</td><td>35 D ✓ m</td><td>h</td></tr> <tr><td>22 D ✓ m</td><td>h</td><td>36 A ✓ m</td><td>h</td></tr> <tr><td>23 E ✓ m</td><td>h</td><td>37 C ✓ m</td><td>h</td></tr> <tr><td>24 A ✓ m</td><td>h</td><td>38 E ✓ m</td><td>h</td></tr> </table>	4 C ✓ m	h	10 E ✓ m	h	5 B ✓ m	h	16 D ✓ m	h	6 B ✓ m	h	20 D ✓ m	h	7 C ✓ m	h	21 B ✓ m	h	8 A ✓ m	h	22 C ✓ m	h	9 B ✓ m	h	23 A ✓ m	h	10 C ✓ m	h	24 D ✓ m	h	11 B ✓ m	h	25 B ✓ m	h	12 C ✓ m	h	26 D ✓ m	h	13 B ✓ m	h	27 C ✓ m	h	14 A ✓ m	h	28 A ✓ m	h	15 E ✓ m	h	29 A ✓ m	h	16 D ✓ m	h	30 B ✓ m	h	17 C ✓ m	h	31 E ✓ m	h	18 A ✓ m	h	32 B ✓ m	h	19 C ✓ m	h	33 E ✓ m	h	20 E ✓ m	h	34 C ✓ m	h	21 B ✓ m	h	35 D ✓ m	h	22 D ✓ m	h	36 A ✓ m	h	23 E ✓ m	h	37 C ✓ m	h	24 A ✓ m	h	38 E ✓ m	h
6 C ✓ m	h	20 A ✓ m	h																																																																																																																																																																
7 B ✓ m	h	21 C ✓ m	h																																																																																																																																																																
8 D ✓ m	h	22 E ✓ m	h																																																																																																																																																																
9 B ✓ m	h	23 A ✓ m	h																																																																																																																																																																
10 E ✓ m	h	24 D ✓ m	h																																																																																																																																																																
11 D ✓ m	h	25 A ✓ m	h																																																																																																																																																																
12 C ✓ m	h	26 E ✓ m	h																																																																																																																																																																
13 A ✓ m	h	27 C ✓ m	h																																																																																																																																																																
14 B ✓ m	h	28 B ✓ m	h																																																																																																																																																																
15 A ✓ m	h	29 B ✓ m	h																																																																																																																																																																
16 C ✓ m	h	30 C ✓ m	h																																																																																																																																																																
17 A ✓ m	h	31 B ✓ m	h																																																																																																																																																																
18 E ✓ m	h	32 C ✓ m	h																																																																																																																																																																
19 B ✓ m	h	33 E ✓ m	h																																																																																																																																																																
20 B ✓ m	h	34 C ✓ m	h																																																																																																																																																																
21 E ✓ m	h	35 D ✓ m	h																																																																																																																																																																
22 D ✓ m	h	36 A ✓ m	h																																																																																																																																																																
23 E ✓ m	h	37 C ✓ m	h																																																																																																																																																																
24 A ✓ m	h	38 E ✓ m	h																																																																																																																																																																
4 C ✓ m	h	10 E ✓ m	h																																																																																																																																																																
5 B ✓ m	h	16 D ✓ m	h																																																																																																																																																																
6 B ✓ m	h	20 D ✓ m	h																																																																																																																																																																
7 C ✓ m	h	21 B ✓ m	h																																																																																																																																																																
8 A ✓ m	h	22 C ✓ m	h																																																																																																																																																																
9 B ✓ m	h	23 A ✓ m	h																																																																																																																																																																
10 C ✓ m	h	24 D ✓ m	h																																																																																																																																																																
11 B ✓ m	h	25 B ✓ m	h																																																																																																																																																																
12 C ✓ m	h	26 D ✓ m	h																																																																																																																																																																
13 B ✓ m	h	27 C ✓ m	h																																																																																																																																																																
14 A ✓ m	h	28 A ✓ m	h																																																																																																																																																																
15 E ✓ m	h	29 A ✓ m	h																																																																																																																																																																
16 D ✓ m	h	30 B ✓ m	h																																																																																																																																																																
17 C ✓ m	h	31 E ✓ m	h																																																																																																																																																																
18 A ✓ m	h	32 B ✓ m	h																																																																																																																																																																
19 C ✓ m	h	33 E ✓ m	h																																																																																																																																																																
20 E ✓ m	h	34 C ✓ m	h																																																																																																																																																																
21 B ✓ m	h	35 D ✓ m	h																																																																																																																																																																
22 D ✓ m	h	36 A ✓ m	h																																																																																																																																																																
23 E ✓ m	h	37 C ✓ m	h																																																																																																																																																																
24 A ✓ m	h	38 E ✓ m	h																																																																																																																																																																

	<table border="0" style="width: 100%; border-collapse: collapse;"> <tr><th style="border-bottom: 1px solid black;">Correct Answer</th><th style="border-bottom: 1px solid black;">Your Answer</th></tr> <tr><td>29 7</td><td>✓ m</td></tr> <tr><td>30 3</td><td>o m</td></tr> <tr><td>31 4, 5 or 9/2</td><td>o m</td></tr> <tr><td>32 1000</td><td>✓ m</td></tr> <tr><td>33 10, 12, 14, or 16</td><td>o h</td></tr> <tr><td>34 0.5 or 1/2</td><td>o h</td></tr> <tr><td>35 28</td><td>✓ h</td></tr> <tr><td>36 100</td><td>50.0 h</td></tr> <tr><td>37 42</td><td>4.2 m</td></tr> <tr><td>38 0</td><td>10 h</td></tr> </table>	Correct Answer	Your Answer	29 7	✓ m	30 3	o m	31 4, 5 or 9/2	o m	32 1000	✓ m	33 10, 12, 14, or 16	o h	34 0.5 or 1/2	o h	35 28	✓ h	36 100	50.0 h	37 42	4.2 m	38 0	10 h		
Correct Answer	Your Answer																								
29 7	✓ m																								
30 3	o m																								
31 4, 5 or 9/2	o m																								
32 1000	✓ m																								
33 10, 12, 14, or 16	o h																								
34 0.5 or 1/2	o h																								
35 28	✓ h																								
36 100	50.0 h																								
37 42	4.2 m																								
38 0	10 h																								

Find out why you missed questions. [www.collegeboard.org/quickstart](http://www.collegeboard.org/quickstart)

**Next Steps**

Most students take the SAT in May or June of their junior year. The good news is that the PSAT/NMSQT is a great way to get ready for the SAT — so you are ready for the next step! You can register and practice for the SAT at [www.collegeboard.org/sat](http://www.collegeboard.org/sat).

On test day, you told us that you're interested in **Sport & Fitness Administration/Management**. To learn more about college majors, visit My College QuickStart™. There you can also:

- Learn about related careers
- Search for colleges
- Take a personality test

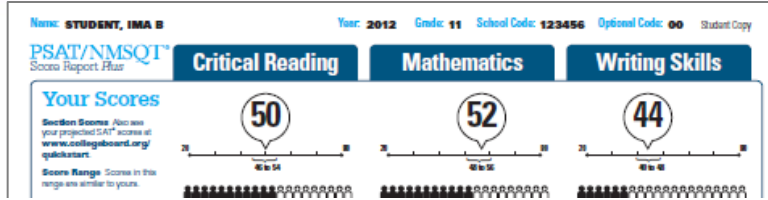
Take the next step today! Go to [www.collegeboard.org/quickstart](http://www.collegeboard.org/quickstart) and sign in using your code below.

**Online Access Code**  
**A02670146P**

# College Readiness Benchmarks

Grade	Reading	Math	Writing	Composite
11	45	47	45	142
10	42	44	42	133

# National Merit Scholarship Corporation Information



## National Merit Scholarship Corporation

National Merit Scholarship Corporation (NMSC) uses a Selection Index based on PSAT/NMSQT® scores as an initial screen of over 1.5 million students who enter its scholarship programs. (See reverse for more information.)

### Your Selection Index

Sum of scores in critical reading, mathematics and writing skills.

**146**

### Percentile

Compares your performance with college-bound juniors.

**47**

### Entry Requirements

(Information you provided on your answer sheet.)

High school student:

**YES**

U.S. citizenship:

**YES**

Year to complete high school and enroll full-time in college:

**2014**

Years to be spent in grades 9–12:

**4**

### Eligibility Information

If your Selection Index places you among the 55,000 high scorers who qualify for program recognition, you will be notified next September.

The Selection Index is the sum of your critical reading, mathematics and writing skills scores.

If it has an asterisk, you do not meet all of the eligibility requirements for the competition.

The Percentile compares your performance to that of other college-bound juniors.

The Entry Requirements section displays information you provided on your answer sheet.

**Organize & Ideas**

Get suggestions for improving your skills before you take the SAT. [www.collegeboard.org/quickstart](http://www.collegeboard.org/quickstart)

Length	Correct Answer	Correct Answer	Length	Correct Answer	Correct Answer	
1	D	✓	16	E	D	m
2	E	✓	18	S	✓	m
3	E	✓	17	A	C	h
4	C	✓	19	E	o	h
5	S	✓	19	D	A	h
6	S	✓	20	D	C	h
7	C	o	21	S	✓	a
8	A	✓	22	C	✓	a
9	S	✓	23	A	✓	m
10	C	✓	24	D	✓	m
11	S	o	25	S	✓	m
12	C	✓	26	D	✓	m
13	S	o	27	C	✓	A
14	A	D	28	A	✓	m

**Data, Statistics & Probability**

Get 8 questions correct (3 omitted)

Get suggestions for improving your skills before you take the SAT. [www.collegeboard.org/quickstart](http://www.collegeboard.org/quickstart)

Length	Correct Answer	Correct Answer	Length	Correct Answer	Correct Answer	
1	A	✓	21	C	✓	m
2	C	✓	22	S	✓	h
3	A	✓	23	C	✓	m
4	B	✓	24	C	✓	m
5	S	✓	25	D	A	m
6	S	o	26	A	✓	a
7	A	C	27	A	C	a
8	C	✓	28	C	A	a
9	C	✓	29	C	A	m
10	A	C	30	D	✓	m
11	S	o	31	S	A	h
12	S	o	32	D	C	h
13	D	✓	33	D	C	h
14	D	✓	34	D	✓	a
15	E	✓	35	E	A	a
16	E	✓	36	A	D	a
17	D	✓	37	S	✓	m
18	A	o	38	C	✓	m
19	C	✓	39	C	✓	h
20	E	✓	40	C	✓	h

**Correct Answer**      **Your Answer**

29	7	✓	m
30	3	o	m
31	4, 5 or 9/2	o	m
32	1300	✓	m
33	10, 12, 14, or 16	✓	h
34	65 or 10	o	h
35	29	✓	h
36	130	50.9	h
37	42	4.2	m
38	0	10	h

**Concise Formed Sentences**

Get 4 questions correct (4 omitted)

**Relationships of Sentences & Paragraphs**

Get 4 questions correct (3 omitted)

Find out why you missed questions. [www.collegeboard.org/quickstart](http://www.collegeboard.org/quickstart)

Take the next step today! Go to [www.collegeboard.org/quickstart](http://www.collegeboard.org/quickstart) and sign in using your code below.

**Online Access Code**  
**A02670146P**

NMSQT is a great way to get ready for the SAT — so you are ready for the next step! You can register and practice for the SAT at [www.collegeboard.org/sat](http://www.collegeboard.org/sat).

My College ClickStart™. There you can also:

- Learn about related courses
- Search for colleges
- Take a personality test

# SAT and ACT Score Correlations

ACT Composite Score	Estimated Relationship SAT Score Critical Reading + Math + Writing	Estimated Relationship SAT Score Critical Reading + Math + Writing	ACT Composite Score
36	2390	2380-2400	36
35	2330	2290-2370	35
34	2250	2220-2280	34
33	2180	2140-2210	33
32	2120	2080-2130	32
31	2060	2020-2070	31
30	2000	1960-2010	30
29	1940	1920-1970	29
28	1880	1860-1910	28
27	1820	1800-1850	27
26	1770	1740-1790	26
25	1710	1680-1730	25
24	1650	1620-1670	24
23	1590	1560-1610	23
22	1530	1510-1550	22
21	1470	1450-1500	21
20	1410	1390-1440	20
19	1350	1330-1380	19
18	1290	1270-1320	18
17	1230	1210-1260	17
16	1170	1140-1200	16
15	1100	1060-1130	15
14	1020	990-1050	14
13	950	910-980	13
12	870	820-900	12
11	780	750-810	11

# Your Skills

## Your Skills

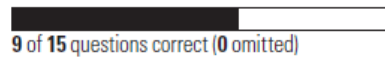
These skill categories can help you understand your score and focus your study efforts before you take the SAT.

To learn more about your skills and review suggestions for improvement based on your test performance, visit [www.collegeboard.org/quickstart](http://www.collegeboard.org/quickstart) and sign in using your code below.

Online Access Code

**A02670146P**

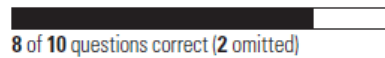
### Determining the Meaning of Words



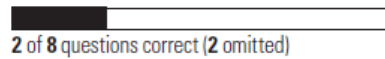
### Author's Craft: Style, Tone & Technique



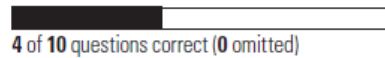
### Reasoning & Inference



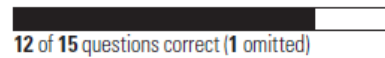
### Organization & Ideas



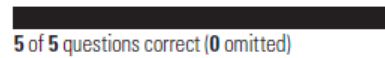
### Understanding Literary Elements



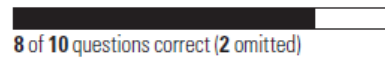
### Number & Operations



### Algebra & Functions



### Geometry & Measurement

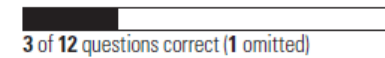


### Data, Statistics & Probability

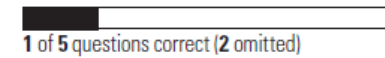


Get suggestions for improving your skills before you take the SAT.  
[www.collegeboard.org/quickstart](http://www.collegeboard.org/quickstart)

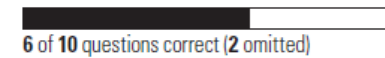
### Grammatical Relationships between Words



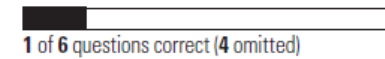
### Words & Phrases Used to Modify or Compare



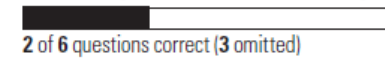
### Phrases & Clauses



### Correctly Formed Sentences

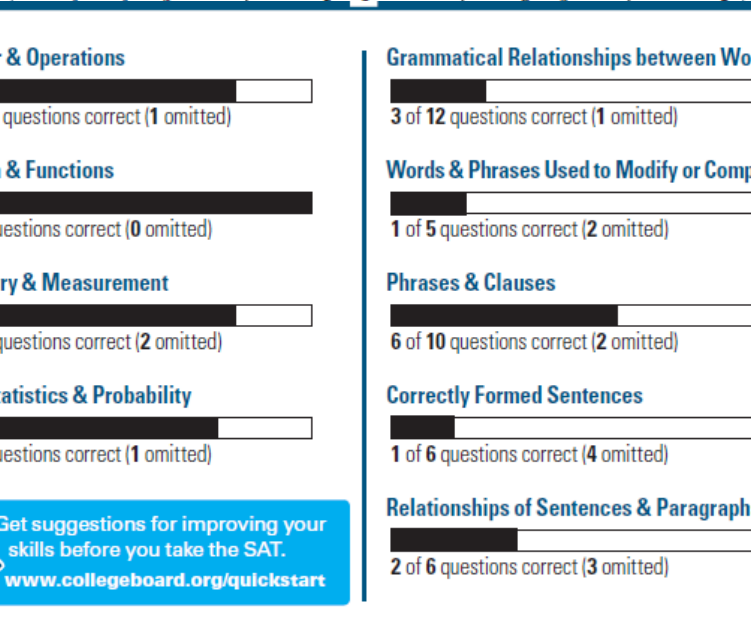
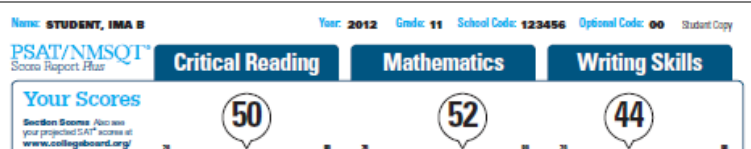


### Relationships of Sentences & Paragraphs



See how you did on each skill. The same skills are tested on the SAT.

You can try hundreds of practice questions, organized by skill, online in My College QuickStart ([www.collegeboard.org/quickstart](http://www.collegeboard.org/quickstart)).



Section	Sub-section	Score	Correct	Total	Omitted
Critical Reading	Determining the Meaning of Words	9	15	0	0
	Author's Craft: Style, Tone & Technique	3	5	0	0
	Reasoning & Inference	8	10	2	0
	Organization & Ideas	2	8	2	0
	Understanding Literary Elements	4	10	0	0
	Number & Operations	12	15	1	0
	Algebra & Functions	5	5	0	0
	Geometry & Measurement	8	10	2	0
	Data, Statistics & Probability	6	8	1	0
	Writing Skills	44	52	3	1

**Next Steps**

Most students take the SAT in May or June of their junior year. The good news is that the PSAT/NMSQT is a great way to get ready for the SAT — so you are ready for the real thing! You can register and practice for the SAT at [www.collegeboard.org/sat](http://www.collegeboard.org/sat).

On test day, you told us that you're interested in **Sport & Fitness Administration/Management**. To learn more about college majors, visit My College QuickStart™. There you can also:

- Learn about related careers
- Search for colleges
- Take a personality test

Take the next step today! Go to [www.collegeboard.org/quickstart](http://www.collegeboard.org/quickstart) and sign in using your code below.

Online Access Code  
**A02670146P**

# Your Answers

You will get your test book back with your PSAT/NMSQT results, so that you can review the questions.

You can also review each test question in My College QuickStart.

Name: STUDENT, IMA B Year: 2012 Grade: 11 School Code: 123456 Optional Code: 00 Student Copy

PSAT/NMSQT™ Score Report Page

### Critical Reading

Question	Correct Answer	Your Answer	Difficulty
1	A	✓ e	e
2	B	✓ e	e
3	A	C m	m
4	C	A h	h
5	B	E h	h
6	D	✓ e	e
7	B	✓ m	m
8	D	o e	e
9	B	✓ m	m
10	E	B h	h
11	D	✓ h	h
12	C	✓ m	m
13	A	✓ m	m
14	B	A m	m
15	A	✓ e	e
16	C	✓ m	m
17	A	✓ e	e
18	E	✓ m	m
19	B	✓ m	m
20	B	E m	m
21	E	✓ m	m
22	D	B h	h
23	E	✓ m	m
24	A	✓ m	m

### Mathematics

Score: 52

You scored higher than 52% of juniors.

### Writing Skills

Score: 44

You scored higher than 32% of juniors.

Eligibility Information: If your Selection Index places you among the 55,000 high scorers who qualify for program recognition, you will be notified next September.

Get suggestions for improving your skills before you take the SAT. [www.collegeboard.org/quickstart](http://www.collegeboard.org/quickstart)

Category	Score	Percentile
Number & Operations	12 of 15	52%
Algebra & Functions	5 of 5	100%
Geometry & Measurement	2 of 18	11%
Data, Statistics & Probability	5 of 8	62%
Crucial Relationships between Words	3 of 12	25%
Words & Phrases Used to Modify or Compare	1 of 5	20%
Phrases & Clauses	6 of 18	33%
Correctly Formed Sentences	2 of 4	50%
Relationship of Sentences & Paragraphs	2 of 4	50%

Get suggestions for improving your skills before you take the SAT. [www.collegeboard.org/quickstart](http://www.collegeboard.org/quickstart)

Find out why you missed questions. [www.collegeboard.org/quickstart](http://www.collegeboard.org/quickstart)

Take the next step today! Go to [www.collegeboard.org/quickstart](http://www.collegeboard.org/quickstart) and sign in using your code below.

Write Access Code: **A02670146P**



# Your Answers: Student-Produced Responses

Some of the math problems required you to grid in answers instead of selecting an option. For these questions, you will see the correct answer(s) written out.

Name: **STUDENT, IMA B** Year: **2012** Grade: **11** School Code: **123456** Optional Code: **00** Student Copy

**PSAT/NMSQT™** Scores Report **PSAT**

Critical Reading	Mathematics	Writing Skills
<b>50</b>	<b>52</b>	<b>44</b>
<small>You scored higher than 55% of juniors.</small>	<small>You scored higher than 52% of juniors.</small>	<small>You scored higher than 33% of juniors.</small>

**Your Scores**  
Section Scores Also see your projected SAT™ scores at [www.collegeboard.org/quickstart](http://www.collegeboard.org/quickstart).  
Score Range Scores in this range are similar to yours.  
Percentile The percentage of test-takers who scored below your score.

**National Merit Scholarship Corporation**  
National Merit Scholarship Corporation (NMSC) uses a Selection Index based on PSAT/NMSQT™ scores as an initial screen of over 1.5 million students who enter its scholarship programs. (See website for more information.)  
**Your Selection Index** Sum of scores in critical reading, mathematics and writing skills.  
**146**  
Percentile Compares your performance with college-bound juniors.  
**47**

**Entry Requirements** Information you provided on your answer sheet.  
High school student: **YES** U.S. citizenship: **YES**  
Year to complete high school and attend full-time in college: **2014**  
Years to be spent in grades 9-12: **4**

**Eligibility Information** If your Selection Index places you among the 55,000 high scorers who qualify for program recognition, you will be notified next September.

Determining the Meaning of Words	Number & Operations	Grammatical Relationships between Words
9 of 15 questions correct (6 omitted)	12 of 15 questions correct (3 omitted)	3 of 12 questions correct (3 omitted)
Author's Craft: Style, Tone & Technique	Algebra & Functions	Words & Phrases Used to Modify or Compare
3 of 5 questions correct (3 omitted)	5 of 5 questions correct (0 omitted)	1 of 5 questions correct (2 omitted)

**Your Skills**  
These skill categories can help you understand your score and focus your study efforts before you take the SAT.  
To learn more about your skills and review suggestions for improvement based on your test performance, visit [www.collegeboard.org/quickstart](http://www.collegeboard.org/quickstart) and enter your code below.

Online Access Code: **A02670146**

	Correct Answer	Your Answer	
29	7	✓	m
30	3	✓	m
31	4.5 or 9/2	✓	m
32	1000	✓	m
33	10, 12, 14, or 16	✓	h
34	8/5 or 1.6	✓	h
35	29	✓	h
36	108	50.9	h
37	42	4.2	m
38	8	10	h

**Your Answer**  
See test questions and explanations of the test at [www.collegeboard.org/quickstart](http://www.collegeboard.org/quickstart).  
You can also seek your counselor for a copy of test book back as you review the questions.

**Key**  
✓ Correct    ✗ Incorrect  
o Omit    m Missed  
h Incomplete

**Scoring**  
• Correct answer = 1 point  
• Omitted answer = 0 point  
• Wrong answers to multiple-choice questions = 0 point  
• Wrong answers to math questions = 0 point  
• Points are added, but scores on the 20-48 scale.

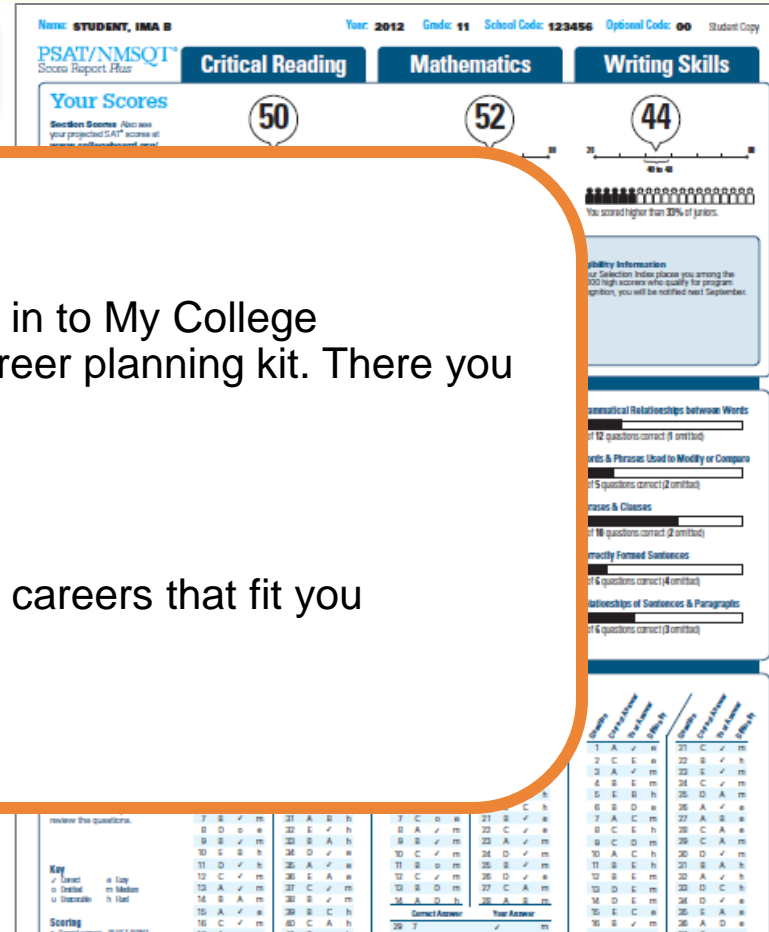
**Next Steps**  
Most students take the SAT in May or June of their junior year. The good news is that the PSAT/NMSQT is a great way to get ready for the SAT — so you are ready for the real thing! You can register and practice for the SAT at [www.collegeboard.org/sat](http://www.collegeboard.org/sat).  
On test day, you told us that you're interested in **Sport & Fitness Administration/Management**.  
To learn more about college majors, visit My College Check!™. There you can also:  
• Learn about related careers  
• Search for colleges  
• Take a personality test

Take the next step today! Go to [www.collegeboard.org/quickstart](http://www.collegeboard.org/quickstart) and sign in using your code below.

Online Access Code: **A02670146P**



# Next Steps



What's next?

Use the access code on your report to log in to My College QuickStart, a personalized college and career planning kit. There you can:

- Search for colleges
- Get a personalized SAT study plan
- Take a personality test to find majors and careers that fit you
- See your AP Potential

[www.collegeboard.org/quickstart](http://www.collegeboard.org/quickstart)

## Next Steps

Most students take the SAT in May or June of their junior year. The good news is that the PSAT/NMSQT is a great way to get ready for the SAT — so you are ready for the next step! You can register and practice for the SAT at [www.collegeboard.org/sat](http://www.collegeboard.org/sat).

On test day, you told us that you're interested in

### Sport & Fitness Administration/Management

To learn more about college majors, visit My College QuickStart™. There you can also:

- Learn about related careers
- Search for colleges
- Take a personality test

Take the next step today! Go to [www.collegeboard.org/quickstart](http://www.collegeboard.org/quickstart) and sign in using your code below.

Online Access Code

**A02670146P**



# My College QuickStart

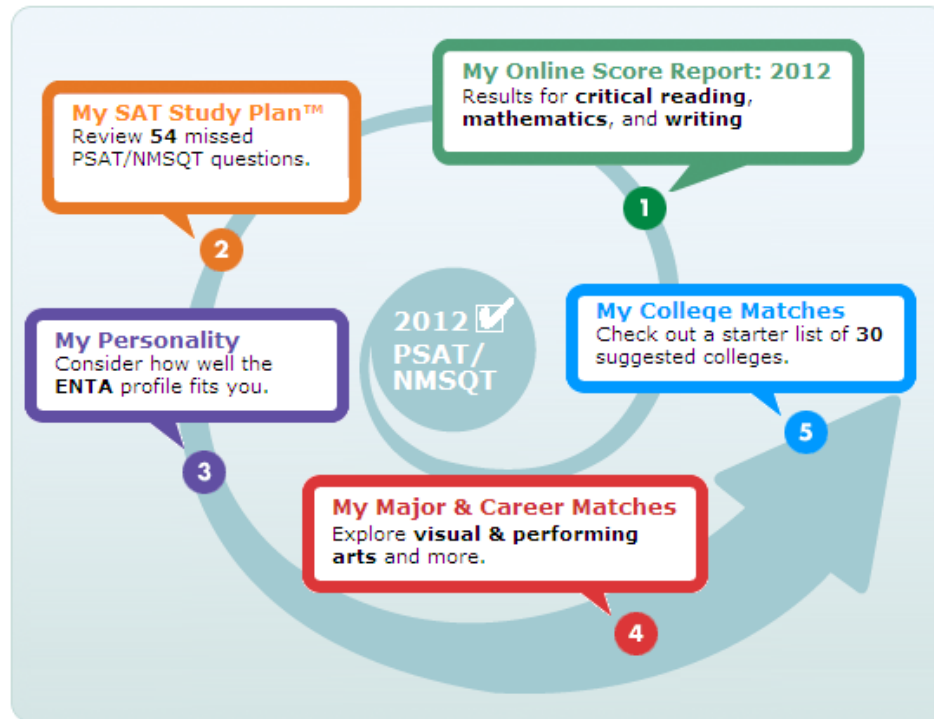
## My College QuickStart™

[Home](#) > [My Organizer](#) > [My College QuickStart](#)

Welcome to your free personalized planning kit, Ima.

Good job on PSAT/NMSQT®! Take your next steps with My College QuickStart.

[Help ?](#)



### Ima Student

ima@collegeboard.com

[Update My Info](#) | [Sign Out](#)

### My AP Potential

Learn more about your AP Potential and see which AP Courses are the best fit for you.

[View Your Potential](#)

### Your Past PSAT/NMSQT Tests

- [2011](#)
- [2010](#)
- [2006](#)

### 5 Popular Tools FOR SENIORS

- [Senior Action Plan](#)
- [SAT Scores & Score Sending](#)
- [Scholarship Search](#)
- [Financial Aid EasyPlanner](#)
- [Campus Visit Checklist](#)

# My College QuickStart

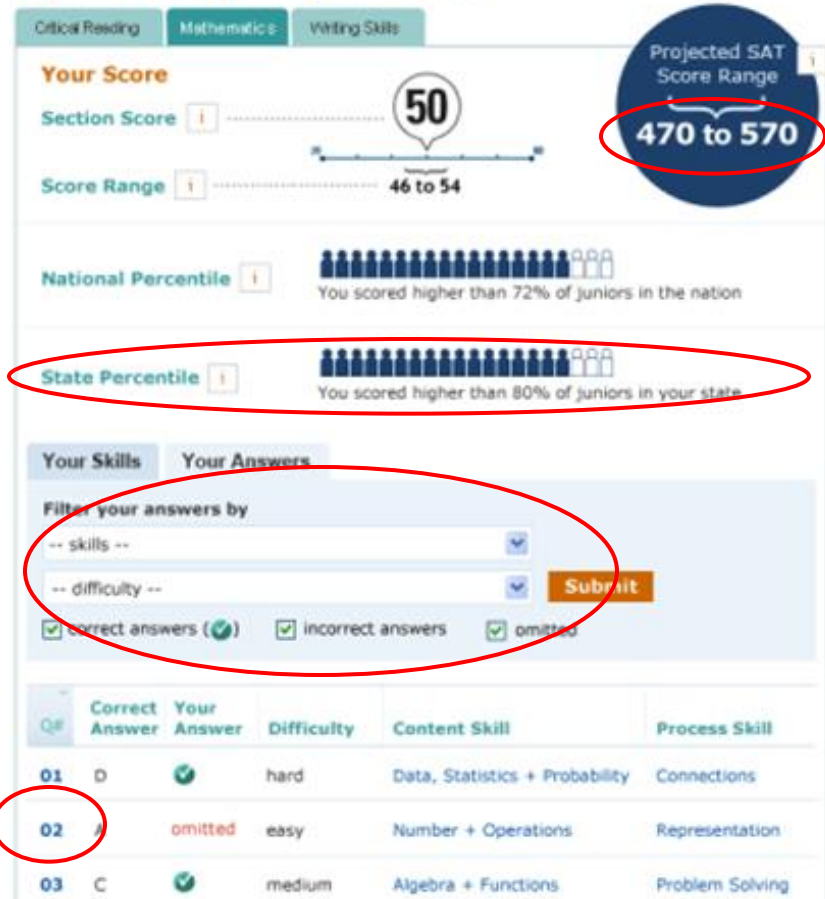
## My Online Score Report

- Projected SAT® score ranges
- State percentiles
- You can filter questions
- Questions and answer explanations

### My College Quickstart

Home > My Organizer > My College QuickStart > My Online Score Report

### My Online PSAT/NMSQT Score Report



# My College QuickStart

## My SAT Study Plan™

- Personalized skills to improve
- SAT practice questions
- An official SAT practice test

### My SAT Study Plan™

Study Plan Home Meet the SAT Critical Reading Mathematics Writing **Practice Test**

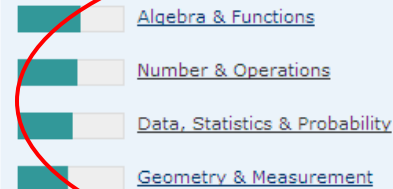
**Review & Practice** My Skills Feedback Get Test-Taking Advice

#### My Skills Feedback

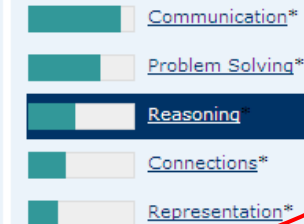
This feedback was created especially for you, based on your PSAT/NMSQT results.

1. Select a skill with a lower performance bar and review the test questions you answered incorrectly. Then try the question again and read the answer explanations.
2. If you find the practice questions too easy, you're probably ready for the next harder level. If you find them too hard, try the next easier level.

#### Content Skills



#### Process Skills



\* These math-only process skill groups were not included on your Score Report Plus.

#### Skill Group: Reasoning

3 of 7 correct (1 omitted)

Definition	Answers	#	Questions
Develop and use mathematical arguments and proofs to explore the truth of conjectures and justify conclusions.	Omitted	1	37 (view all)
	Incorrect	3	16, 26, 35 (view all)
	Correct	3	10, 22, 32 (view all)

#### Practice Now

Skills **too easy**? [Try some harder practice questions](#)

Skills **too hard**? [Try some easier practice questions](#)

# My College QuickStart

## My College Matches

- Starter list of colleges
- Criteria to customize search
- Ability to save searches

My College Matches

Help you the

City University of New York: Hunter College  
New York, New York  
College Board code: 2301

Print Full Profile  
Send to a Friend

Add to List Compare Find Similar Map It

▼ At a Glance	► Admission	► Cost & Financial Aid	► Academics & Support	► Sports
► Deadlines	► SAT®, AP®, CLEP®	► Majors	► Housing & Campus Life	► International Students

**Main Address**  
695 Park Avenue  
New York, NY 10065  
(212) 772-4000  
[www.hunter.cuny.edu](http://www.hunter.cuny.edu)

**Admission Office**  
695 Park Avenue  
New York, NY 10065  
(212) 772-4490  
[admissions@hunter.cuny.edu](mailto:admissions@hunter.cuny.edu)  
Contact: William Zlata  
Director of Admissions

**Type of School**  
Public  
Liberal Arts College  
Four-year  
Coed  
Percent applicants admitted: 28%  
Regionally Accredited  
Middle States Association of Colleges and Schools  
College Board member

**Calendar:** Semester

**Degrees offered:**

- Bachelor's
- Master's

**Setting**  
Urban setting  
Very large city (over 500,000)  
Commuter campus

**Size**  
Total undergrads: 15,698  
First-time degree-seeking freshmen: 2,042  
Degree-seeking undergrads: 14,709  
Graduate enrollment: 5,560

Search Again

Medville College

Help ?  
Sign Out  
ed Searches  
int Results

## My College QuickStart

**Log in to your personalized account at**

**[www.collegeboard.org/quickstart](http://www.collegeboard.org/quickstart)**