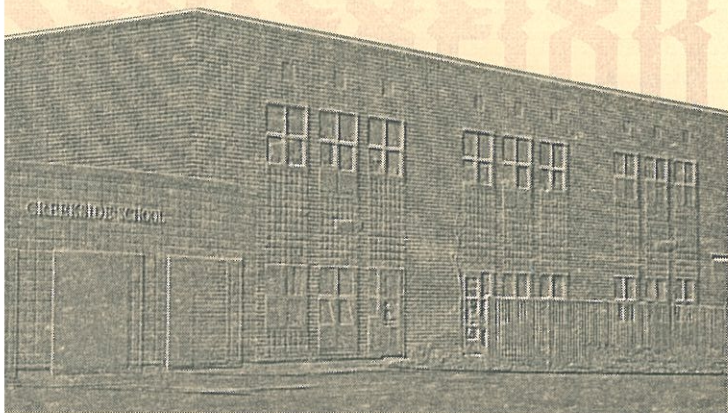


School District U-46

# Creekside Elementary School Dedication Ceremony

November 15, 1998





# *Creekside Elementary Dedication Ceremony*

## *Welcome and Introductions*

*Karen Carlson, Principal*

## *Presentation of Colors and Pledge of Allegiance*

*Boy Scout Troop 10, Cub Scout Pack 14 and Girl Scout Troops 661, 754, 1075*

## *Comments from District U-46 Representatives*

*Joyce Fountain, Vice President, Board of Education*

*Dr. Marvin Edwards, Superintendent of Schools*

## *Presentation from Burnidge, Cassell and Associates*

*Charles Burnidge, President*

## *America/America The Beautiful Medley*

*Creekside 5th & 6th Grade Chorus*

*Nicole Skrzypchak, Director*

*Guided tours will be provided by*

*Creekside 4th grade students and refreshments will be available in  
the commons immediately following the ceremony.*

*Thank you for joining us today for this special event.*

## **Message from the Principal**

**O**n behalf of the staff, students and parents of Creekside Elementary School, we welcome you to our new building. We are very proud of our beautiful new facility and are extremely excited about serving the children in our community.

Our building represents the work and support of numerous people. We would like to acknowledge and thank some of those who contributed to the creation of our new school:

- the District U-46 Board of Education and their advisors, Superintendent Edwards and the Citizens' Advisory Council, for their vision in seeing the need for our school and their leadership in initiating this project;
- the Creekside staff for their enthusiasm, professionalism, dedication and their willingness to embrace change and new challenges;
- the parents who have shown their support and willingness to make this school their school by volunteering their services in many different ways;
- the talented architects, trades people, contractors, District U-46 Construction Management, District U-46 Plant Operations staff and the Purchasing and Warehouse Departments who worked with so much dedication to open our building on time.

We recognize the important contributions of all these people. However, our school as a learning institution is mainly the people within the building and in the community. Our greatest and most important challenge is to work together to establish and maintain a spirit of dedication, cooperation and excellence. Together we can make a difference in the lives of our children.

Creekside Elementary will be here for many years to come. We are all very fortunate to be a part of its beginning. The children of this community have a wonderful school where they can grow and learn. We dedicate Creekside to them. We promise to do our best to serve them well.

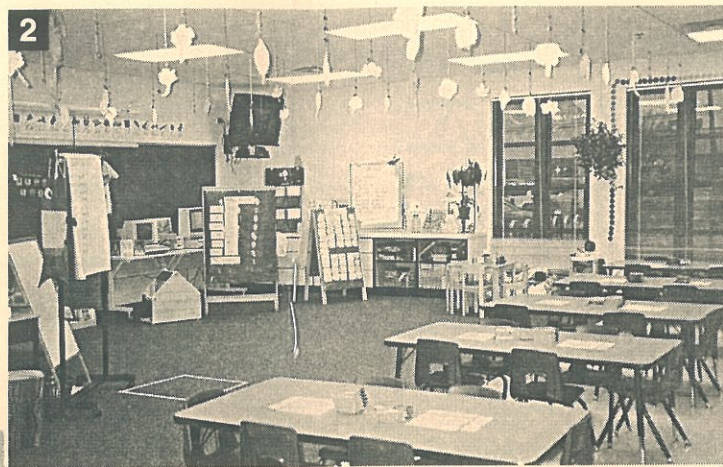
Karen Carlson  
Principal



# Snapshots of Your New School



1 Learning Center



2 Kindergarten Classroom

3 Main office

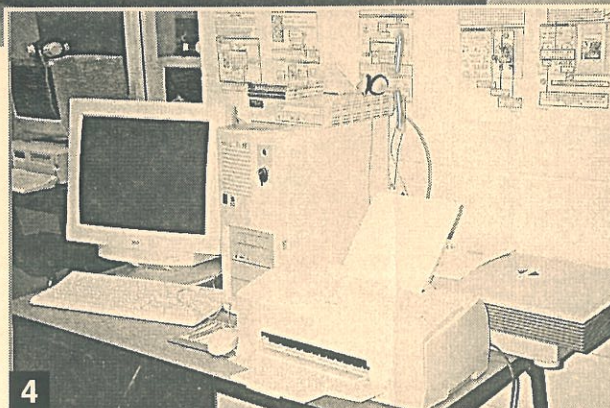


4 The Computer Lab is equipped with a "Creation Station" that works with the latest software, a color printer, CD recorder and scanner. A digital camera is also used in conjunction with the Station.

5 Each classroom has ample storage and countertop space.

6 Computer Lab

7 The school is wired with a central video system that transmits programming to a monitor hanging in each classroom. Each monitor also has a VCR attached to it for showing of individual programs.



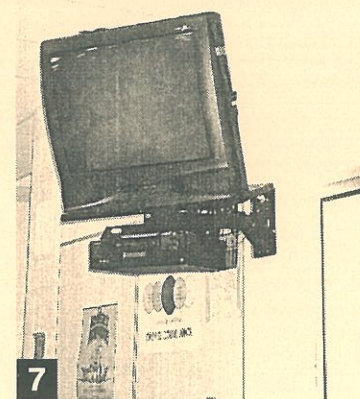
4



5



6



7



## Key Features

- Early childhood facility
- Art classroom
- Music classroom
- Beautiful learning resource center
- Multi-purpose room
- Kitchen adjacent to the commons
- Full-sized gymnasium
- Sufficient office space for itinerant specialists to serve children

## Architect & Contractor

**C**REEKSIDE ELEMENTARY SCHOOL was designed by the architectural firm of Burnidge, Cassell & Associates of Elgin. The general contractor was A.J. Maggio Construction of Mt. Prospect. Robert Kellen is School District U-46's Coordinator of Construction.

## Creekside Elementary Staff

1998-1999

**Karen Carlson**  
*Principal*

*Kindergarten*  
Sara Olofson  
Karla Vestal

*First Grade*  
Joanna Mueller  
Beth Potter  
Nancy Stade

*Second Grade*  
Linda Dahl  
Suzanne Evans  
Melissa Genz

*Third Grade*  
Deb Elk  
Ginger Weincek

*Fourth Grade*  
Diane Peterson  
Denise McNutt  
Juli Wallace

*Fifth Grade*  
Jan Geier  
Irene Matula

*Sixth Grade*  
Dena Farrell  
Matt Freeseemann

*ENI*  
Nancy Keating  
Ann Hammerel  
Ellen Doescher

*LD*  
Rhonda Joustra

*Art*  
Jami Fanning

*Music*  
Nicole Skrzypchak

*Physical Education*  
Jill Mammoser

*Music Therapist*  
Mary Mutchler

*Adaptive Physical Education*  
Joe Richert  
Greg Widerberg

*Band*  
Steve Childs

*Orchestra*  
Sue Thorne

*Nurse*  
Jayne McCulloch

*Psychologist*  
Al Spicer

*Social Worker*  
Carol Nightingale

*Social Work Intern*  
Janet Ori

*Speech Therapist*  
Cynthia Crooks

*Library Para Professional*  
Laura Fetty

*Secretary to the Principal*  
Cheryl Lemvig

*Clerical Aide/Secretary*  
Nancy Martin

*Physical Therapist*  
Tina Courtin

*Occupational Therapists*  
Deepak Mehta  
Linda Ponce

*Hearing Itinerant*  
Janice Riotto

*Vision Itinerant*  
Pat Fischer

*Orientation Mobility  
Specialist Itinerant*  
Jill Jansen

*Head Custodian*  
Silavong Keo

*Night Custodian*  
Carlos Saenz

*Teacher Assistants*  
Karen Casement  
Jan McMahon  
Maria Vargas  
Cindy Flink  
Noreer Hoffmann  
Stan Holat  
Marjorie Reisner  
Heather MacMurray

*Lunch Supervisors*  
Sandy DelFava  
*Lead Lunch Supervisor*  
Mary Jane LeTourneau  
*Assistant Lead Supervisor*

Connie Corbin  
Susan Glasgow  
Diane Goscinski  
Waheeda Haq  
Millie Heard  
Mohammad Javaid  
Polaire Park  
Pat Prehm  
Fattoum Salem  
Michelle Whitehead

*Continued on next page*



### **EARLY CHILDHOOD STAFF**

#### *Supervisor*

Mary Enck

#### *Classroom Teachers*

Mary Belanger

Linda Hardeland

Eva Montelongo

Carol Prieur

Dina Reza

Ruth Seymour

#### *Nurse*

Barb Voss

#### *Psychologist*

Laura Rossiter

#### *Social Worker*

Dina Wool

#### *Bilingual Social Worker*

Diana Parado

#### *Speech Therapist*

Karen Bender

#### *Bilingual Speech Therapist*

Ann Resener

#### *Transition Consultant*

Julie Kallenbach

#### *Secretary*

Guadalupe Saravia

#### *Social Worker*

Carol Nightingale

#### *Teacher Assistants*

Kerri Dunghey

Maureen Wolf

Karla McDivitt

Donna Strong

Sara Lee Johnson

Linda Bauer

### **CREEKSIDE PTO**

#### **OFFICERS**

Dan Duffy & Sharon  
Schuman

#### *Co-Presidents*

Judy Osborne & Paul  
Peterson

#### *Co-Vice Presidents*

Lori Wade

#### *Treasurer*

Jeanine Manser

#### *Secretary*

---

### **BOARD OF EDUCATION**

Dr. Sandra Ann Angelo  
*President*

Joyce Fountain  
*Vice President*

Dr. Robert Wise  
*Secretary Pro-Tempore*

Karen Carney  
Douglas Heaton  
Janet Korman  
Glenn Murphy

### **DISTRICT U-46 ADMINISTRATION**

Dr. Marvin E. Edwards  
*Superintendent*

Lalo Ponce  
Jim Feuerborn

Paul Patterson  
*Area Superintendents*

Gordon Schulz  
*Assistant Superintendent  
of Management Services*

Robert Gilliam  
*Assistant Superintendent of  
Human Resources*

Richard Majka  
*Assistant Superintendent for  
Employee Relations*

Ann Riebock  
*Assistant Superintendent for  
Educational Services and  
Accountability*

Larry Ascough  
*Director of  
School/Community Relations*



### **School District U-46**

#### **Administrative Offices**

355 E. Chicago St.  
Elgin, IL 60120-6543  
847-888-5000