

U-46 Facilities Master Plan Update May 15, 2023



Brian Lindholm, Chief of Staff

Dr. Ann Williams, Deputy Superintendent of Operations

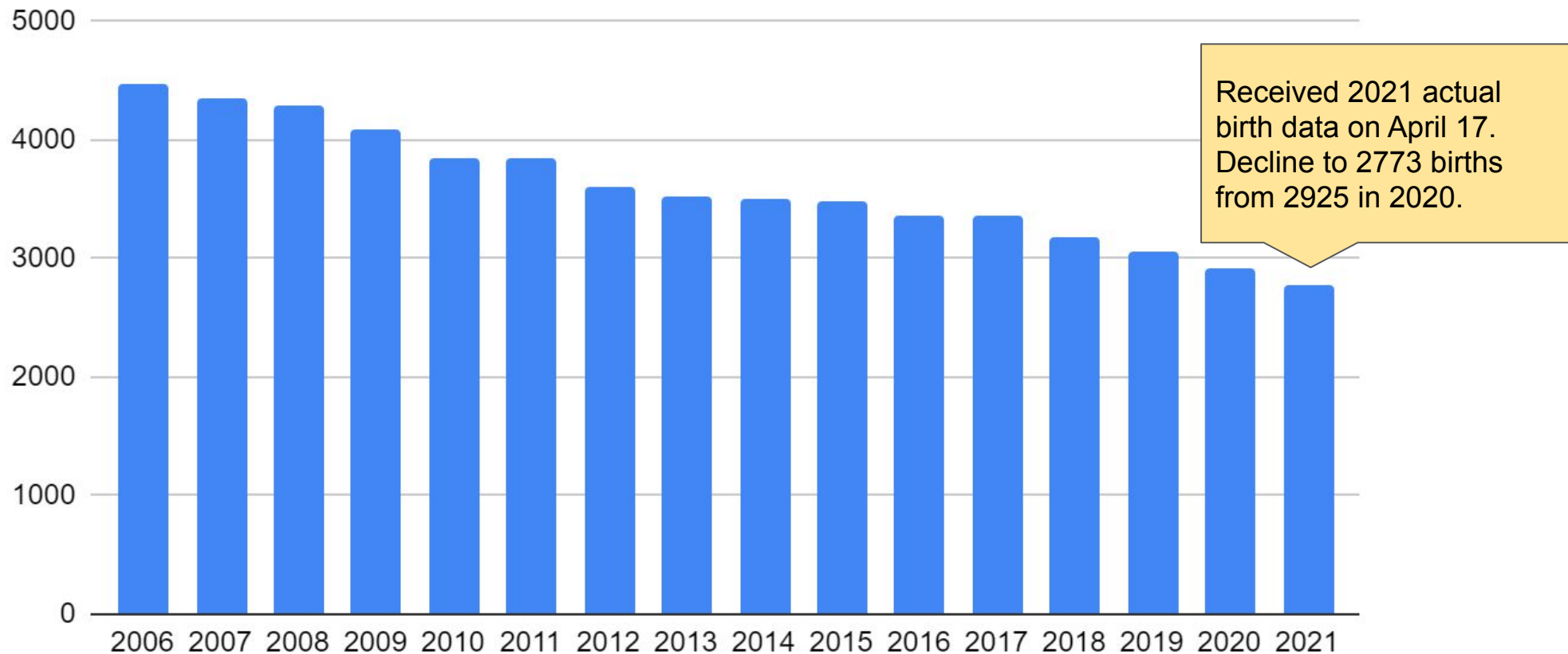
Tonight's Update

- Review updated enrollment projections
- Review capacity utilization of our schools
- Impact on school boundaries
- Unite U-46 sessions to resume in June



Updated Enrollment Projections

Historical Birth Data in U-46 Attendance Area

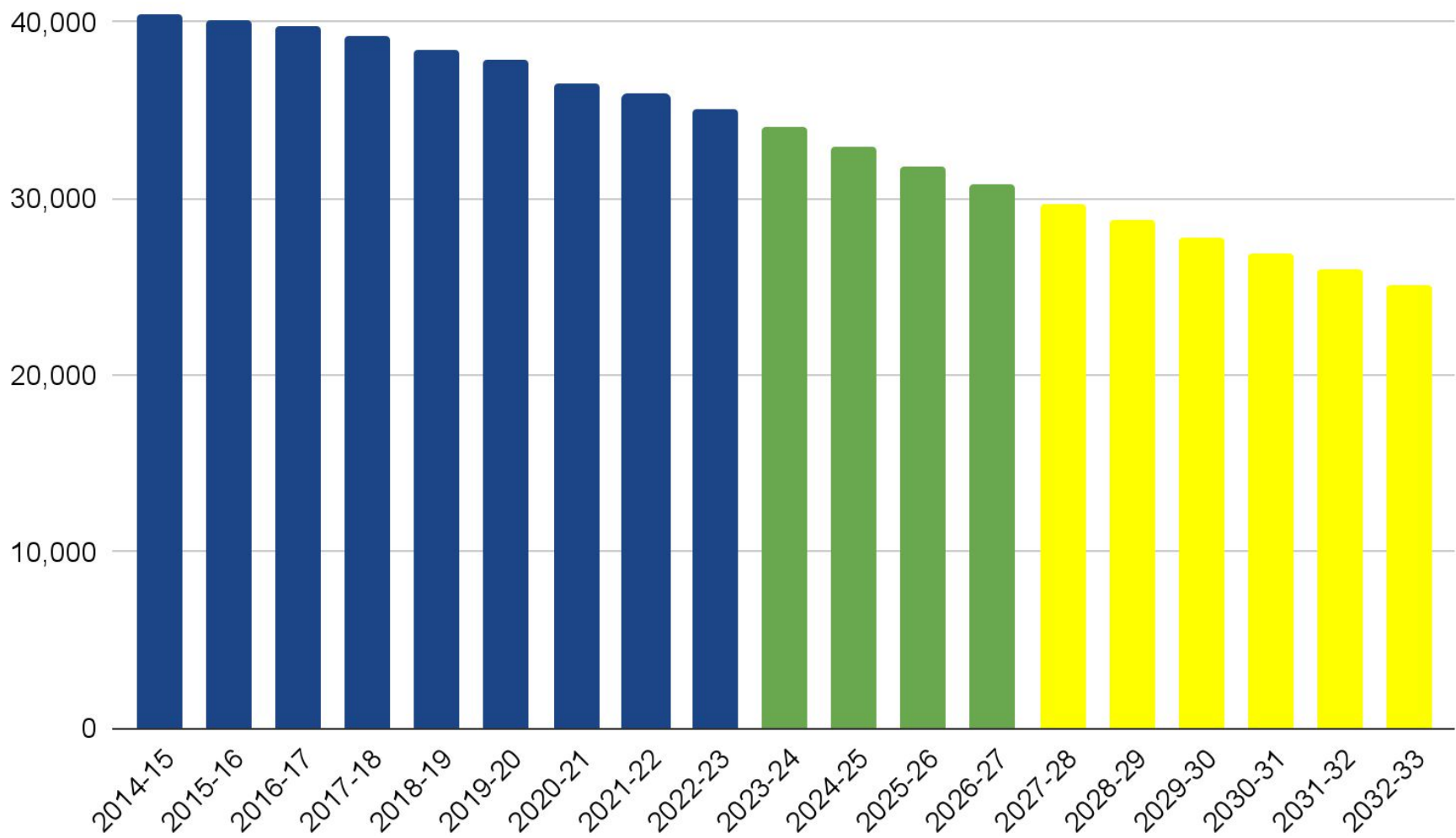


Historical Birth Data in U-46 Attendance Area

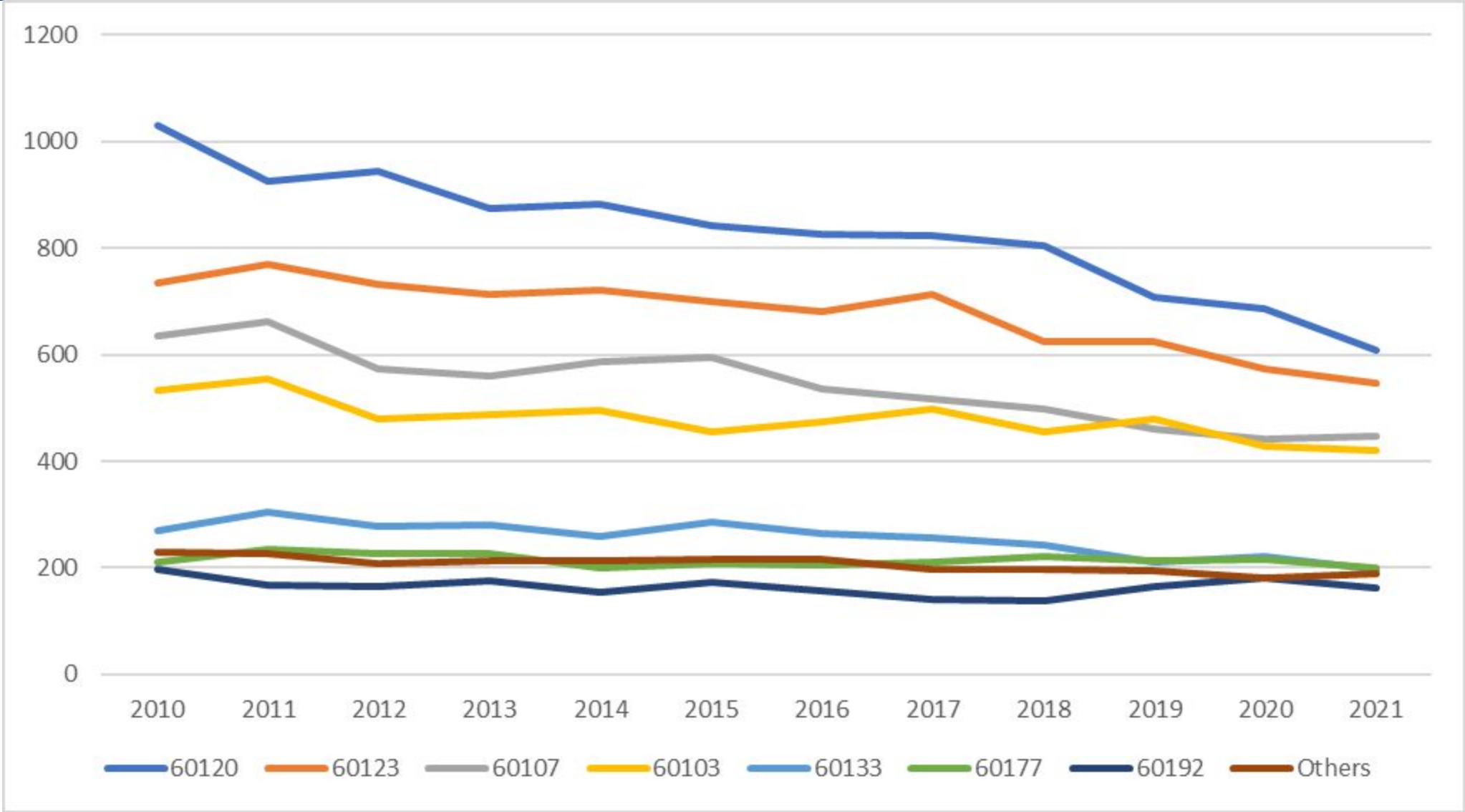
Updated Enrollment Projections

Births Historic Actuals							
2014	2015	2016	2017	2018	2019	2020	2021
3511	3475	3361	3356	3178	3058	2925	2781
K enrollment 5 years later							
2019-20	2020-21	2021-22	2022-23	2023-24	2024-25	2025-26	2026-27
2564	2311	2326	2298	2,225	2,141	2,048	1,947
				Estimates			
Participation*							
73.03%	66.50%	69.21%	68.47%	70.00%	70.00%	70.00%	70.00%
				Estimates			

Updated Enrollment Projections

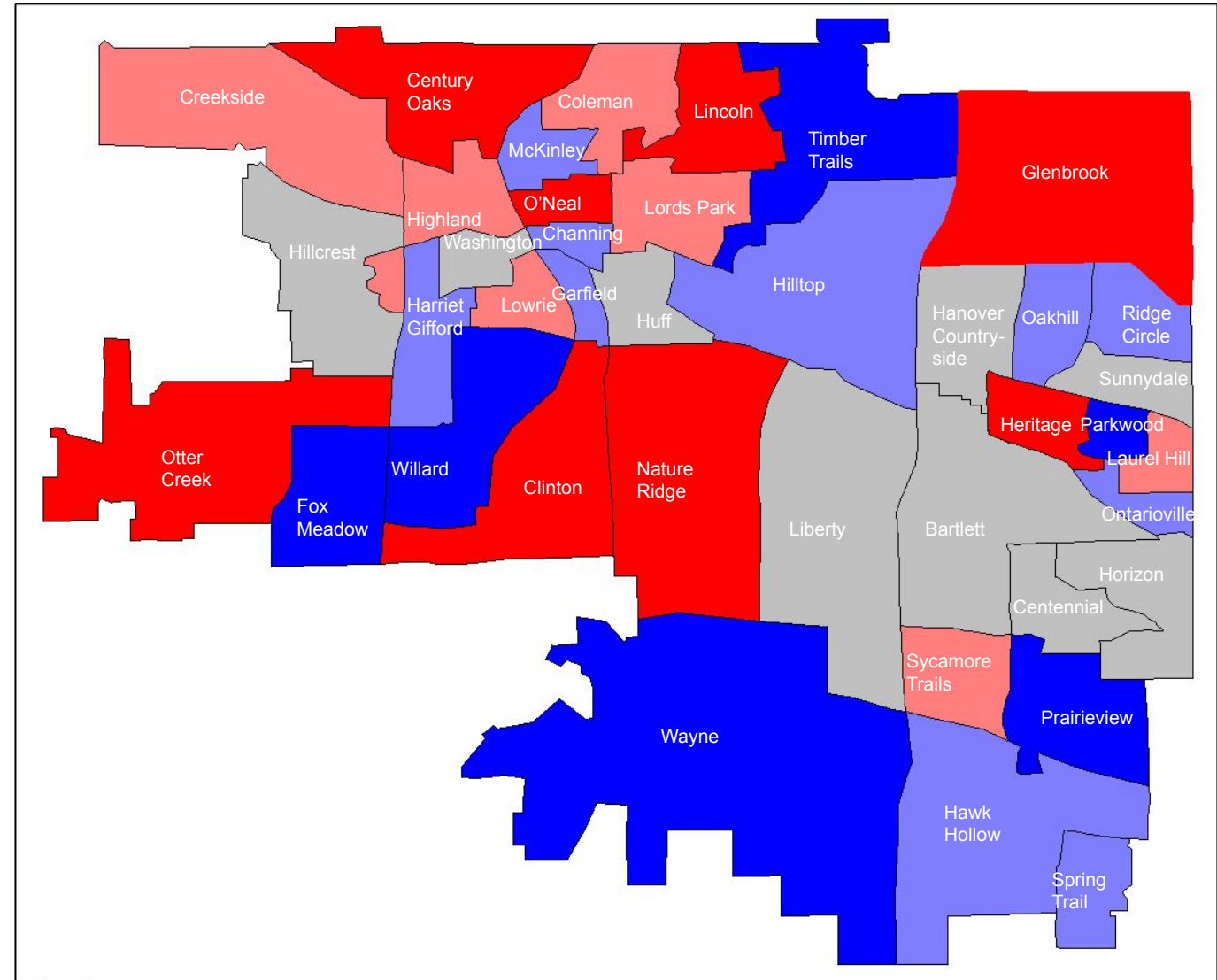


Historical Births by Zip Code in U-46 Attendance Area



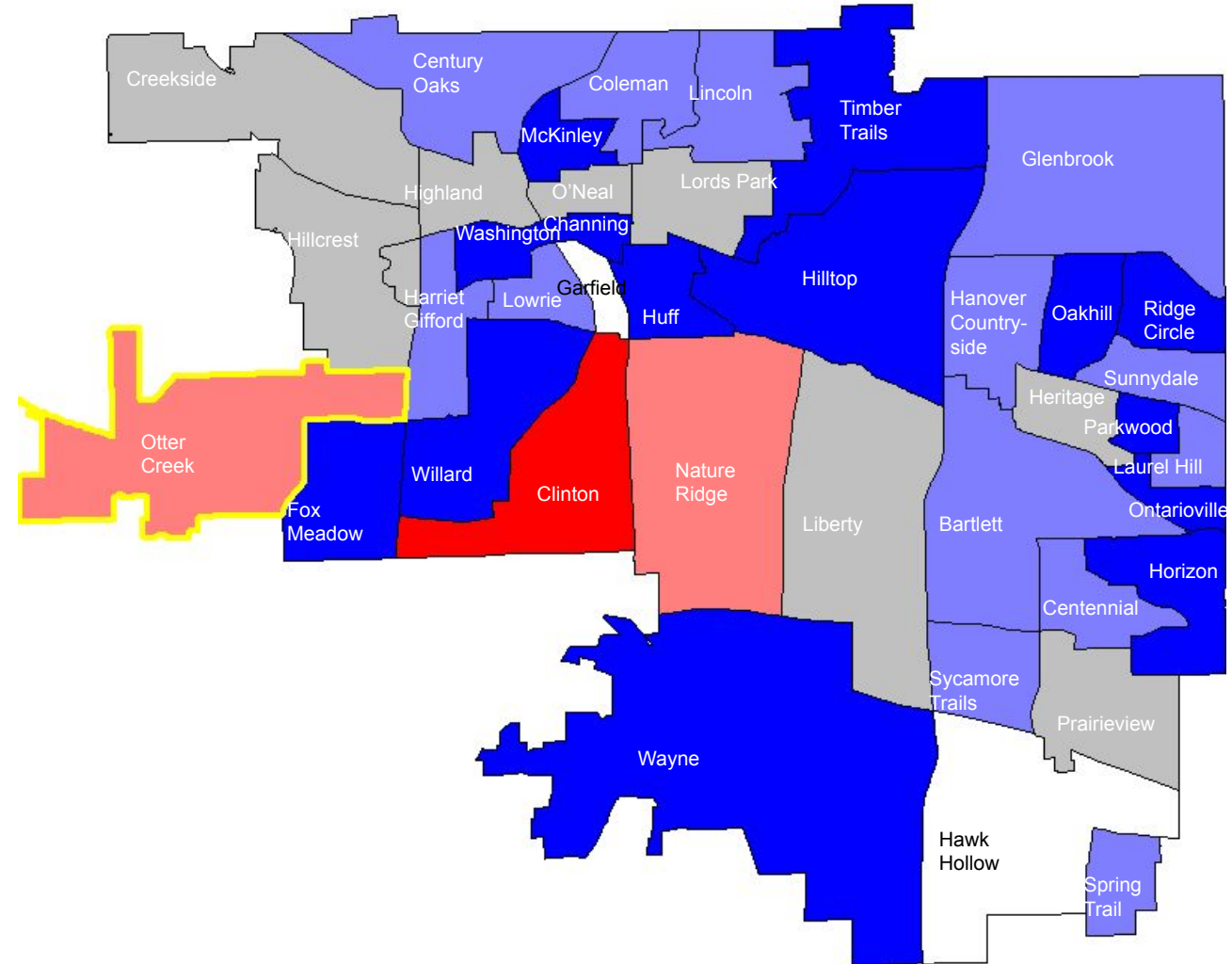
Projected Capacity Utilization of Elementary Schools (2026)

	Percent Capacity	Schools
	51-62%	6
	63-74%	10
	75-86%	9
	87-98%	7
	99-113%	8



Projected Capacity Utilization of Elementary Schools (2027)

	Percent Capacity	Schools
	51-62%	14
	63-74%	13
	75-86%	8
	87-98%	2
	99-113%	1



Note: 2027 elementary enrollment data includes only grades K-5

Unite U-46 Elementary Schools Identified

Washington Elementary



Lowrie Elementary



McKinley Elementary



Glenbrook Elementary



Century Oaks Elementary



Parkwood Elementary

McKinley Elementary



McKinley Elementary School

258 Lovell St, Elgin, IL 60120

BUILDING SUMMARY			
Gross SF	35,031	Number of Levels	2
Year Built	1887	Number of Additions	4

FACILITY GRADES

Spatial Educational Adequacy(25%) D

(Data collected through Staff Survey)	5.5/10
Physical Features	6.4/10
Environment Supports Variety	4.7/10
Visual Stimulation	6.7/10
Future Readiness	4.3/10

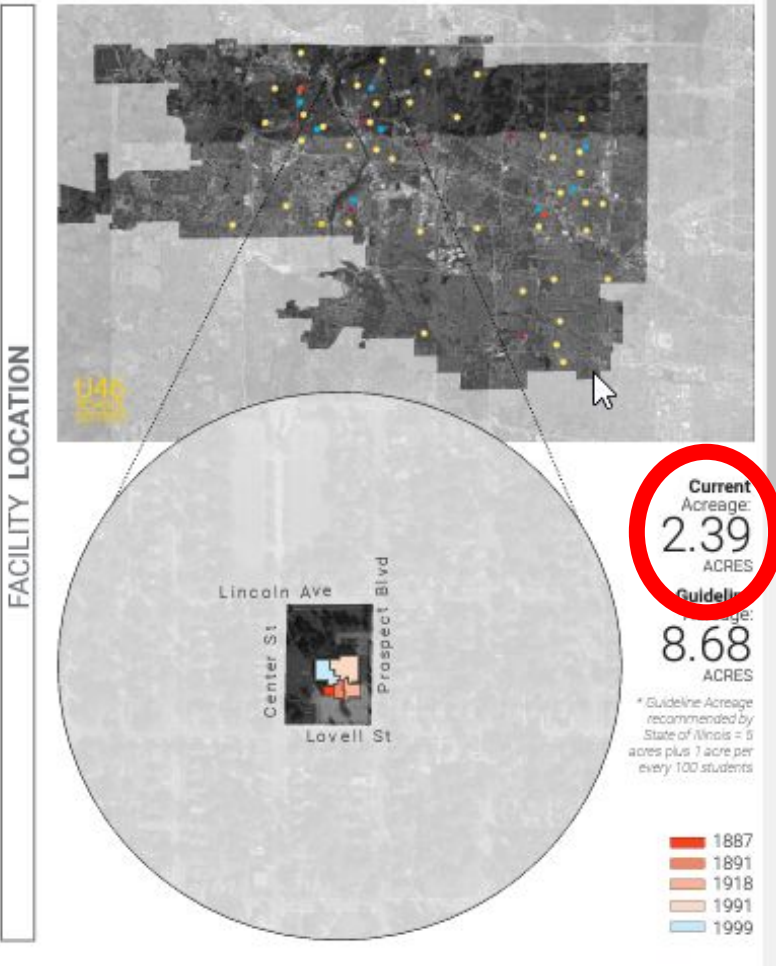
Building Allocation(25%) D

Gross SF/student	159
Site Acreage/Guideline	28%
Mobiles In Use/Basement Used	No/Yes

Facility Condition(35%) C

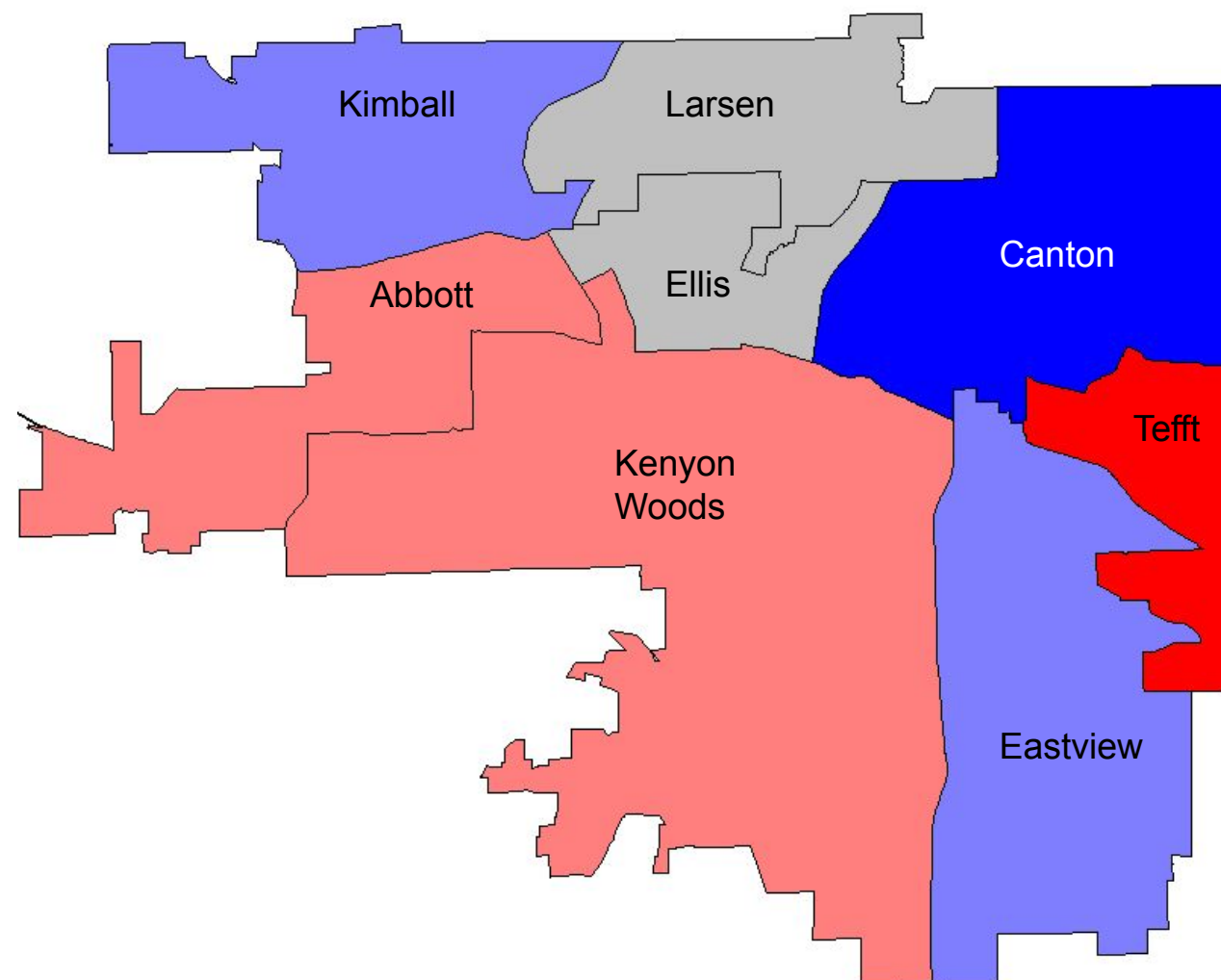
FCI	.11
Water Usage(5%)	D
Gallons/SF	18.3
Energy Usage(10%)	B
Total EUI	45.8kBTU/SF/yr
Electric	16.7kBTU/SF/yr
Gas	29.1kBTU/SF/yr

AGGREGATED FACILITY GRADE C



Current Middle School Capacity Utilization

	Percent Capacity	Schools
	51-62%	1
	63-74%	2
	75-86%	2
	87-98%	2
	99-113%	1



Middle School Capacity Example



Canton

Middle School

1100 Sunset Circle, Streamwood, IL 60107

BUILDING SUMMARY			
Gross SF	137,754	Number of Levels	2
Year Built	1976	Number of Additions	0

Occupancy**	859
Effective Capacity	497
Total Enrollment	505

FACILITY GRADES

Spatial Educational Adequacy(25%)

C

(Data collected through Staff Survey)

Physical Features

7.6/10

Environment Supports Variety

7.4/10

Visual Stimulation

5.4/10

Future Readiness

6.5/10

Building Allocation(25%)

A

Gross SF/student

272

Site Acreage/Guideline

102%

Mobiles In Use/Basement Used

No/No

*School has IGA with Park District

Facility Condition(35%)

C

FCI

.23

Water Usage(5%)

A

Gallons/SF

3.6

Energy Usage(10%)

A

Total

41.0kBTU/SF/yr

Electric

18.7kBTU/SF/yr

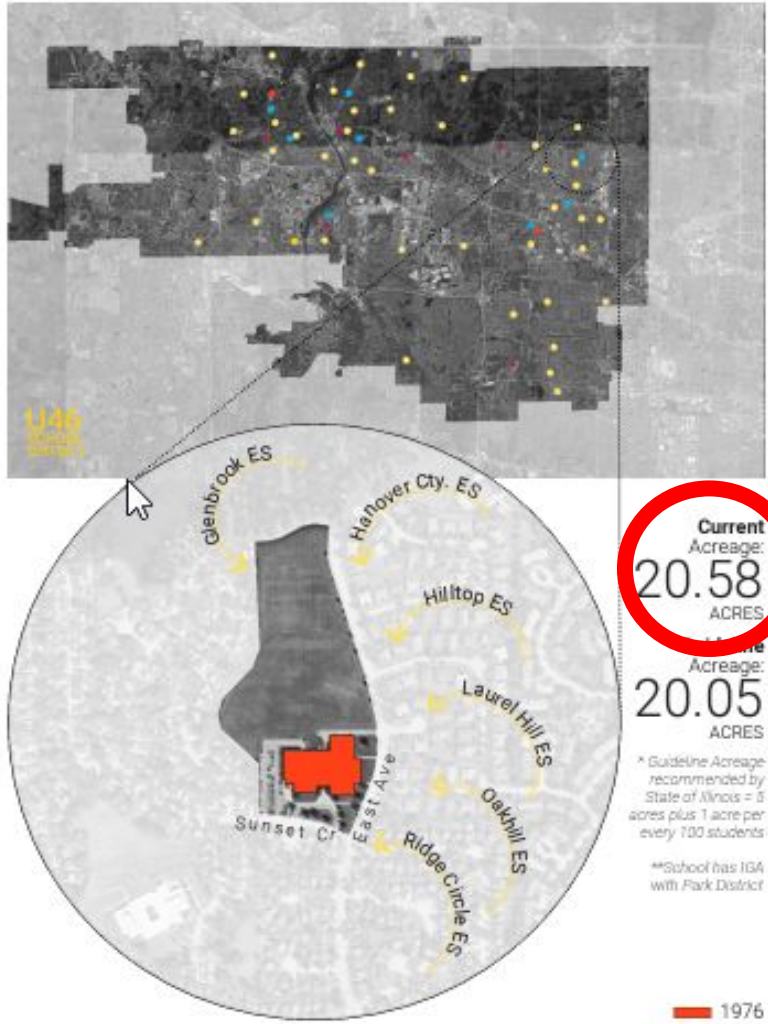
Gas

22.3kBTU/SF/yr

AGGREGATED FACILITY GRADE

B

FACILITY LOCATION



Current Acreage:

20.58

ACRES

Guideline Acreage:

20.05

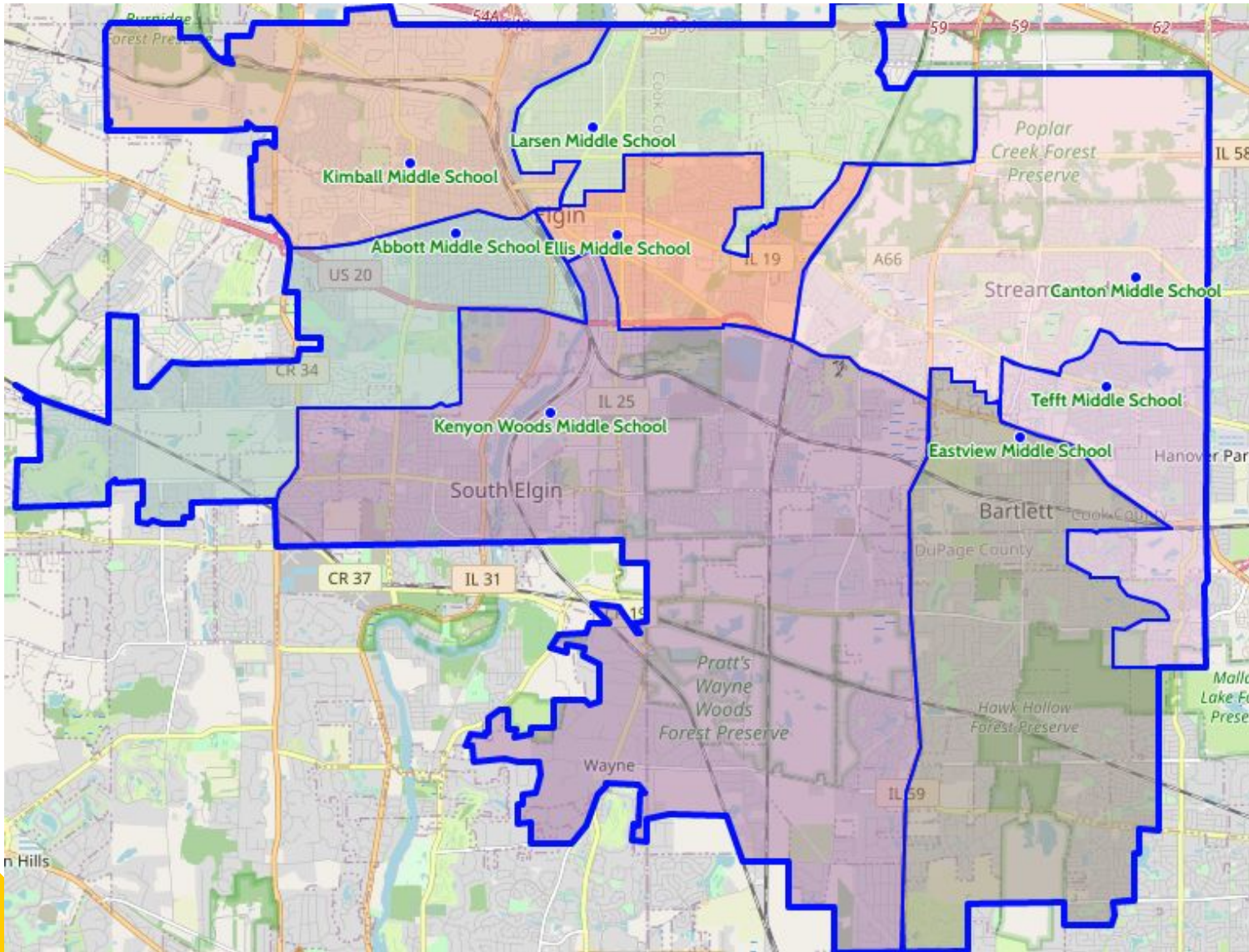
ACRES

* Guideline Acreage recommended by State of Illinois = 5 acres plus 1 acre per every 100 students

**School has IGA with Park District

1976

Impact on School Boundaries



SDU46



OUR SCHOOLS

- Our Schools
- Calendar
- Our Boundaries
- What School Do I

Interactive District Boundary Map

Every school in School District U-46 has a geographical area eligible to attend a school linked to a boundary area. [CLICK HERE](#) to re

Interactive boundary map
available on district
website under “Our
Schools”

Unite U-46: Phase 2



Considerations for Existing Sites

- Enrollment projections
- Capacity Utilization
- Facility Assessment Scores from DLR Group in 2020-2021
- Recent facility assessments by U-46 administrative team
- Findings from upcoming DLA site study and feasibility study



Considerations for New Construction

- Site location
- Overall acreage
- Residential area
- Density of student population
- Proximity to other schools



THANK YOU!

