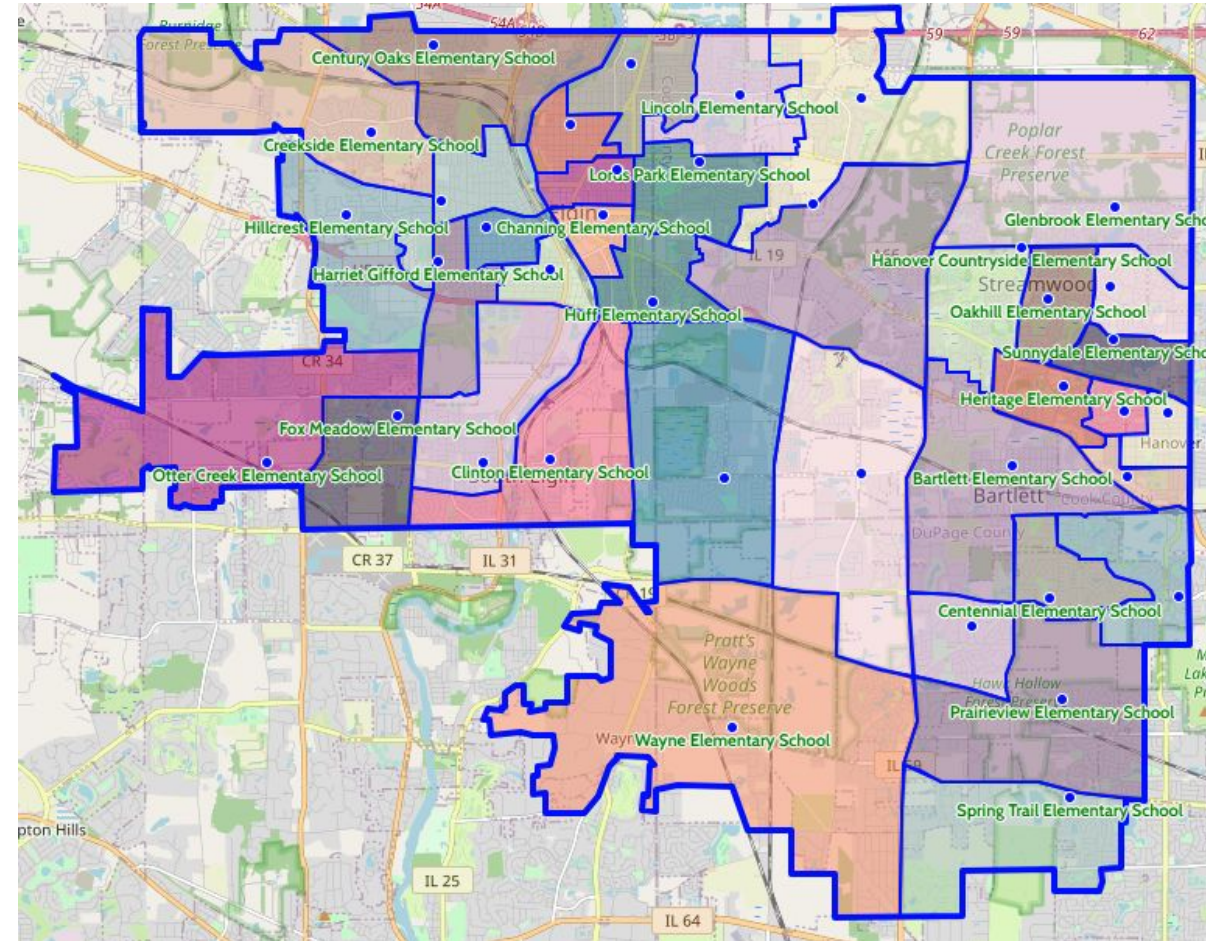




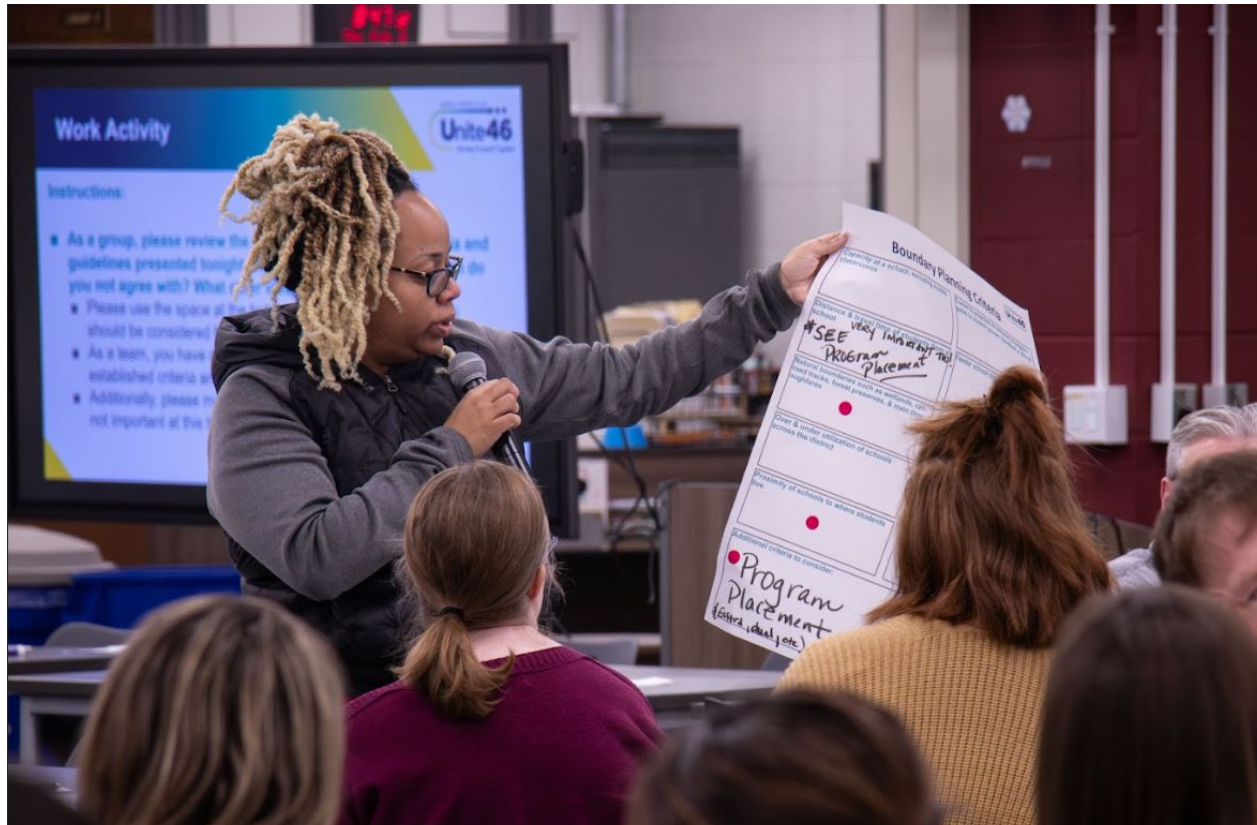
March 18, 2024
Facilities Update for Board of Education

Tonight's Update

- ✓ Summary of feedback from February 8, 2024 Unite U-46 session
- ✓ Construction update for new middle schools
- ✓ Updated schedule for next Unite U-46 sessions



Unite U-46 Community Engagement Session on February 8, 2024



Attendance Boundary Criteria Priorities

**Unite U-46 Small
Group Work Activity**

11 Small Groups

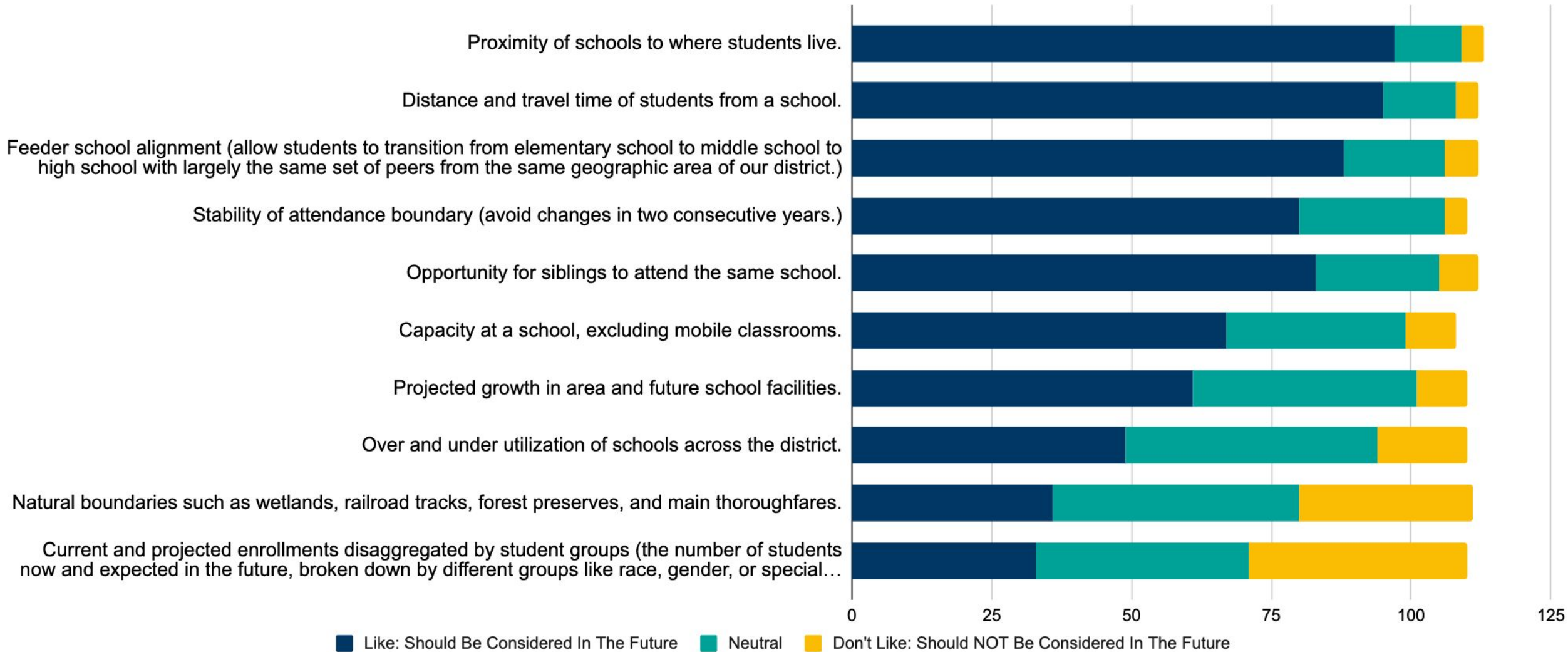
**Unite U-46
Small Individual
Activity**

75+ Participants

**Online Boundary
Feedback Form**

116 Responses

Criteria Ranking from Online Survey



Not all participants ranked each category

Attendance Boundary Criteria Priorities

**Proximity To
Where Students
Live, Keep
Neighborhoods
Together**



Attendance Boundary Criteria Priorities

Distance
and
Travel Time



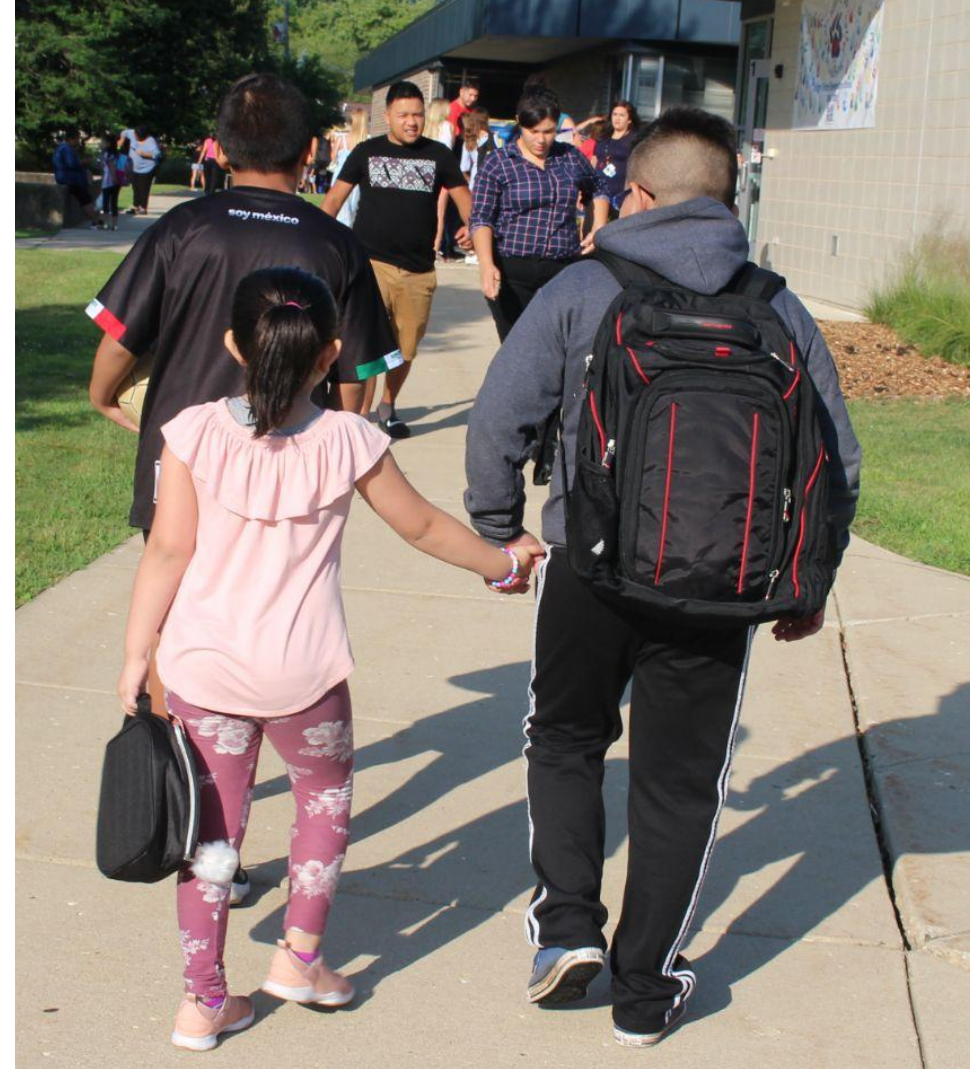
Attendance Boundary Criteria Priorities

Consistent Feeder Patterns



Attendance Boundary Criteria Priorities

**Keep
Siblings
Together**



Attendance Boundary Criteria Priorities

**Avoid Multiple
Boundary
Changes for
Students During
Their Time in U-46**



Attendance Boundary Criteria Priorities

**Consider
School
Capacity and
Class Sizes**



Criteria Ranking from February 8

Top Five Criteria from Small Group Activity

1. Distance and travel times to school
2. Consistent feeder patterns
3. Proximity to schools and keeping communities together
4. Ability of siblings to stay at the same school
5. Stability of attendance boundaries. Avoid changes in two consecutive years.

Ranking of Criteria from CAC in 2010

1=Most Liked 10=Least Liked

1. Proximity of schools to where students live.
2. Distance and travel time of students from a school.
3. Feeder school alignment (allow students to transition from elementary school to middle school to high school with largely the same set of peers from the same geographic area of our district).
4. Stability of attendance boundary (avoid changes in two consecutive years).
5. Opportunity for siblings to attend the same school.
6. Capacity at a school, excluding mobile classrooms.
7. Projected growth in area and future school facilities.
8. Over and under utilization of schools across the district.
9. Natural boundaries such as wetlands, railroad tracks, forest preserves, and main thoroughfares.
10. Current and projected enrollments disaggregated by student groups (the number of students now and expected in the future, broken down by different groups like race, gender, or special needs).

Criteria Ranking from February 8

CRITERIA	COLORED DOTS CROSSED OUT		NOTES
Capacity at a school, excluding mobile classrooms	4	1	Show us evidence this impacts outcomes. Mobiles need to be discontinued. No new ones
Current and projected enrollments disaggregated by student groups	2	0	N/A
Distance and travel time of students from a school	10	1	Combine w/ proximity, reduce wasted time and money on gas by reducing commute time, by hundreds of hours and thousands in gas. Very important too! See program placement. Don't pass one school to get to another. Walking schools versus.
Feeder school alignment	8	2	Kids in same neighborhood should go to same school. Don't split neighborhoods. All Elementary, Middle, High Schol should all be together. Not necessarily aligned boundaries, but split the splits more evenly, is not having how Bartlett Elementary is the only school that feeds into Eastview but then goes to SEHS.
Natural boundaries such as wetlands, railroad tracks, forest preserves, and main thoroughfares	4	4	Consider safety aspects of transportation, parking lot size, busy streets, traffic. Not a valid way to divide. For Elementaries especially.
Opportunity for siblings to attend the same school	6	1	Important for parents, we know program placement will affect this. Including self contained.
Over and under utilization of schools across the district	1	0	N/A
Projected growth in area and future school facilities	0	0	N/A
Proximity of schools to where students live	6	1	Safety of students getting driving to school.
Stability of attendance boundary Avoid changes in two consecutive years	5	1	Recommend 4-5. So a kid that has to transition K-1st can stay 1-5th in same school. To ensure Social/ emotional well being of our children & their sense of community especially during adolescence (ex. not standing at one High School & then changing to another before graduation)

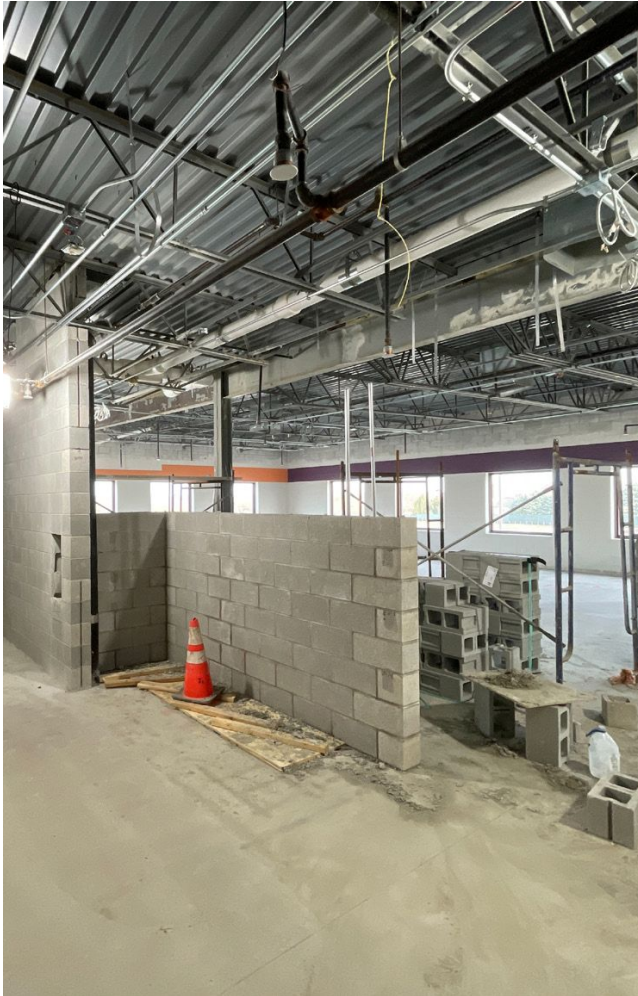
Construction Update for New Middle School in Bartlett



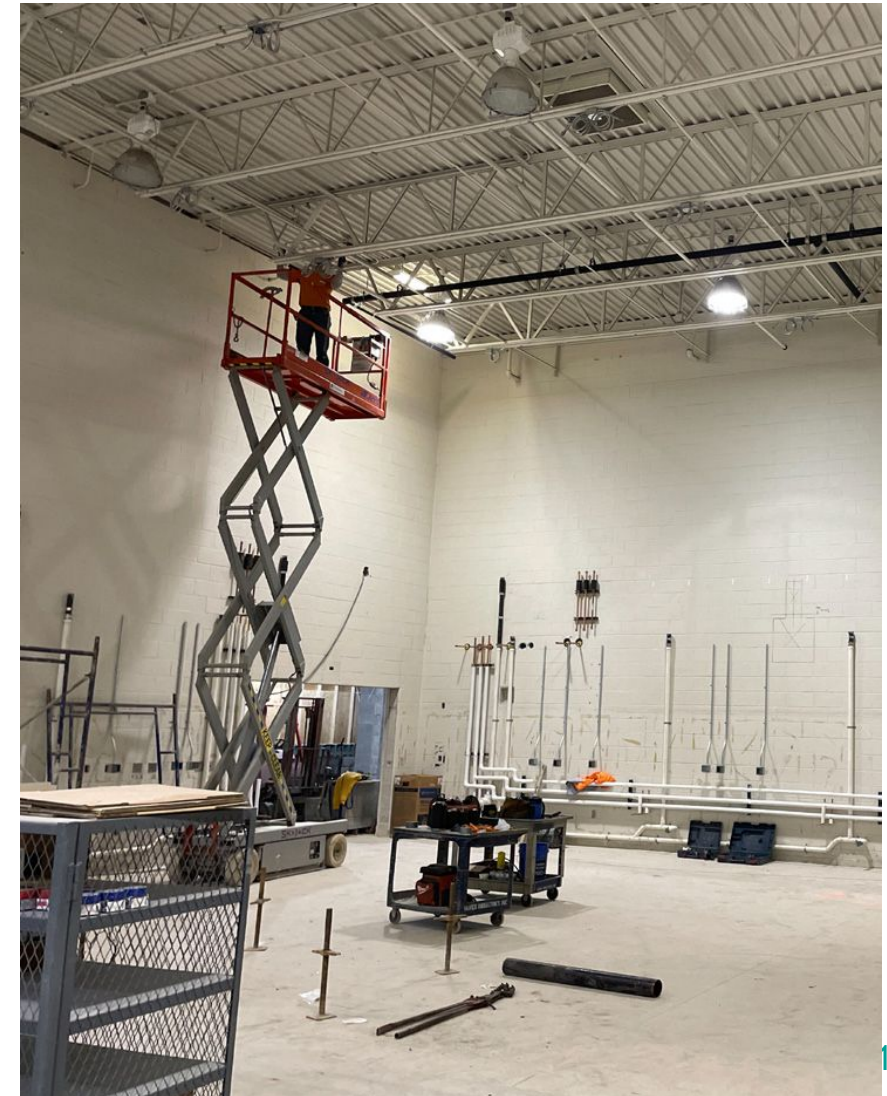
Work in Progress

- Foundation work
- Site clearing and detention pond work
- Site utilities work
- Overhead mechanical, electrical and plumbing
- Classroom painting
- Classroom Ceiling Grid installation
- Interior Wall installation (1st and 2nd floors)
- Preparing for masonry and steel Work for the gymnasium conversion
- Main Office Window Openings

Construction Update-Middle School in Bartlett



Construction Update-Middle School in Bartlett



Other Construction Updates

New Middle School in Elgin

- Reviewing conceptual designs and estimating costs

Kenyon Woods Update and Addition

- Reviewing conceptual designs and estimating costs
- Preparing for staff visioning with the architect

Kimball Update and Addition

- Reviewing conceptual designs and estimating costs
- Discussing gender neutral bathroom options



Unite U-46 Schedule

Future Sessions:

- April 4 session will be rescheduled for early May. Date/time location TBD.
- Topic will be reviewing boundary recommendations for the new middle school in Bartlett and managing student transitions.



SCHOOL DISTRICT U-46



Thank You!