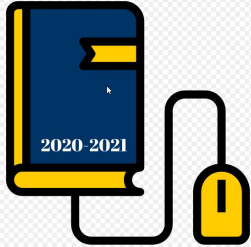
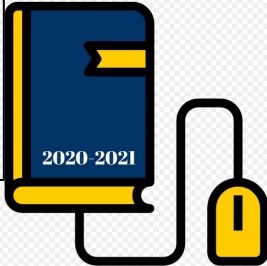


# Update on 2020-2021 Back To School Plan



**Back to School in U-46**



**De Regreso a Clases en U-46**

March 15, 2021

# Instructional Model Scenarios

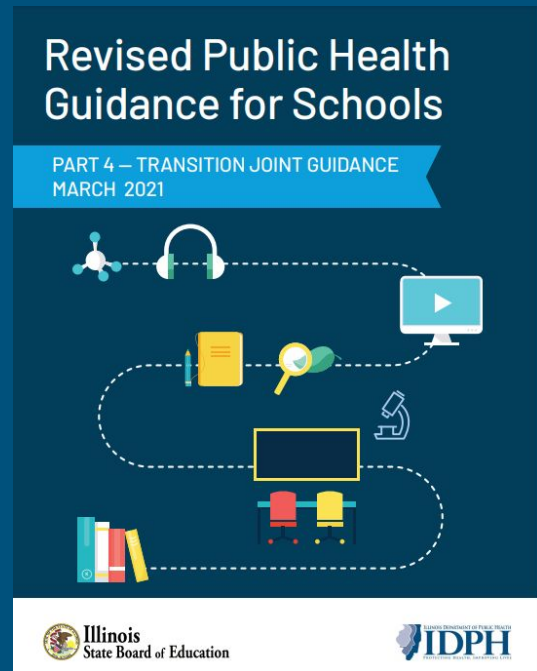


# Updated Guidance - March 9, 2021

***"This joint guidance supports the return to in-person instruction as soon as practicable in each community" - Dr. Carmen Ayala***

Mitigation Strategies Must Be Followed:

1. Universal mask wearing
2. Social distancing observed as much as possible
  - a. 3-6 feet for students and fully vaccinated staff
  - b. Six feet remains the safest distance, but 3 feet allowed
  - c. Unvaccinated staff should remain 6 feet to the extent possible



# Mitigation Strategies Continued

3. Contact tracing and isolation of suspected/confirmed cases (quarantine rooms required).
4. Increase in schoolwide cleaning and disinfection.
5. Handwashing and respiratory etiquette.
6. Self-Certification will continue to be required by staff and students; however, no symptom check required at the school. Screener removed runny noses, congestion, and abdominal pain.
7. Occupancy restrictions (including buses/50)

# Additional Mitigation Strategies

1. Testing - Binax Now/CLIA Waiver approved. Start after spring break.
2. Vaccinations



# COVID-19 Metrics

Total count								
	County	ZIP Code	3/8	3/15	New cases this week	Approximate Population	% increase from prior week	New cases per 100,000 residents this week
Bartlett	DuPage and Cook	60103	3810	3857	47	40,647	1.2%	116
Carol Stream	DuPage	60188	4084	4134	50	39,203	1.2%	128
Elgin- East	Kane and Cook	60120	5950	5972	22	60,000	0.4%	37
Elgin - West	Kane	60123	5076	5114	38	48,884	0.7%	78
Hanover Park	DuPage and Cook	60133	4354	4376	22	37,426	0.5%	59
Hoffman Estates * - U-46 area	Cook	60192	936	952	16	17,053	1.7%	94
South Elgin	Kane	60177	2498	2518	20	24,755	0.8%	81
Streamwood	Cook	60107	4177	4214	37	39,228	0.9%	94
Wayne	DuPage	60184	228	231	3	2,439	1.3%	123
West Chicago	DuPage	60185	4131	4163	32	26,816	0.8%	119
All zip codes			35244	35531	287	336,451	0.8%	85

The IDPH Positivity Rate <small>All data reported for the past 7 days</small>	Region	7 day positivity rate %	# of days increasing	New cases per 100K	Daily positivity rate 1/24/2021
Kane County	8	4.8		92	
Dupage County	8	4.6		120	
Cook (not including Chicago)	10	3.2		78	
ZIP Codes U-46	8 and 10	n/a	n/a	85	n/a
The threshold for more mitigation		>8%	>=7	>50 per 100k	>8%

# COVID-19 Metrics



			Total Youth count						
	County	ZIP Code	3/8	3/15	New cases this week	% increase from prior week	Person under age 18 (US Census)	New cases per 100,000 youth	cumulative ratio
Bartlett	DuPage and Cook	60103	571	577	6	1.1%	9,877	61	5.84%
Carol Stream	DuPage	60188	638	649	11	1.7%	8,938	123	7.26%
Elgin- East	Kane and Cook	60120	860	864	4	0.5%	8,833	45	9.78%
Elgin - West	Kane	60123	693	703	10	1.4%	7,066	142	9.95%
Hanover Park	DuPage and Cook	60133	700	701	1	0.1%	9,843	10	7.12%
Hoffman Estates * - U-46 area	Cook	60192	149	153	4	2.7%	4,007	100	3.82%
South Elgin	Kane	60177	447	449	2	0.4%	7,253	28	6.19%
Streamwood	Cook	60107	548	553	5	0.9%	8,709	57	6.35%
Wayne	DuPage	60184	39	40	1	2.6%	609	164	6.57%
West Chicago	DuPage	60185	701	710	9	1.3%	5,953	151	11.93%
			5346	5399	53	1.0%	71,089	75	

# U-46 COVID Case Data



The logo for U-46 Academic Success for All, featuring the text "U46" in a large, white, serif font on a dark blue background. Below the "U" is a stylized yellow graphic of three upward-pointing chevrons. To the right of the logo, the text "ACADEMIC SUCCESS FOR ALL" is written in a smaller, white, sans-serif font.

**SCHOOL COMMUNICATIONS DURING COVID-19**  
News for U-46 Students & Families

Translate

User Options

HOME

FOOD DISTRIBUTION

HEALTH AND SAFETY

DISTANCE LEARNING

WEBINARS

RESOURCES

CONTACT US

Edit Page

Health and Safety

> Safety Measures Overview

> COVID-19 Reporting

> Self Certification Instructions

> COVID-19 Notification Flowcharts

> U-46 Safe and Ready to Learn Tip Sheet

> U-46 Safe and Ready to Learn Flyers

Open, Closed, and Positive Cases of Covid-19 Since March 2020

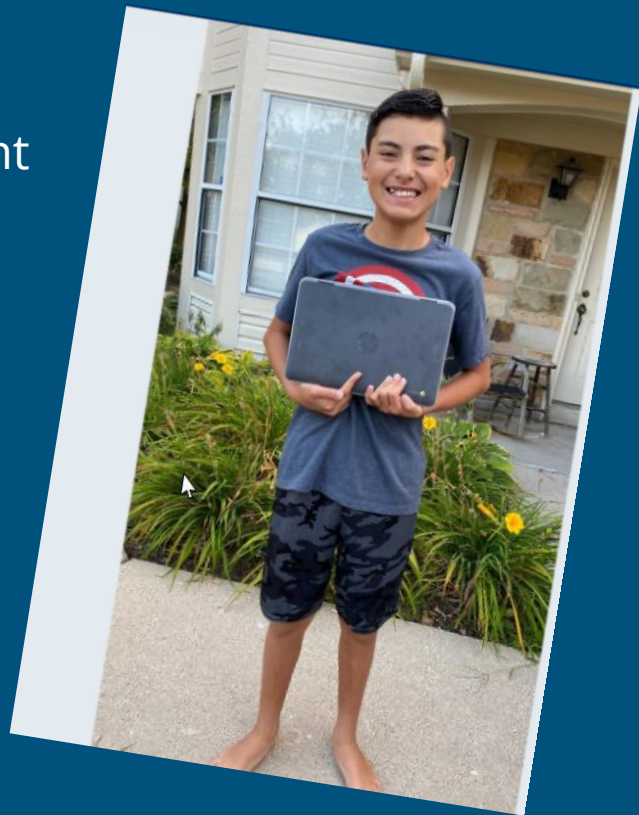
LOCATION	OPEN CASES	CLOSED CASES	POSITIVE CASES
Abbott Middle	15	111	20
Assessments and Accountability	0	5	0
Bartlett Elementary	5	96	22
Bartlett High	29	372	87
Business Services	0	2	1
Cabinet Level	0	3	0
Canton Middle	4	66	10
Centennial Elementary	9	90	21
Central School Programs	7	70	10
Century Oaks Elementary	18	136	10

<https://www.u-46.org/Page/17549>



# In-Person Instructional Model Updates

- Tuesday, 4/6/2021 will be all online, synchronous learning day following the current Monday Instructional Schedule.
- Updates take effect on Wednesday, 4/7/2021.
- The 4/7 start is a response to U-46 sites being used as polling places on 4/6.
- A/B day designations will be eliminated. An updated district calendar will be posted this week.
- Additional information about potential Early Childhood changes is forthcoming.



# In-Person Instructional Model Updates

- Elementary, K - 6: All currently enrolled Hybrid students will transition to in-person (no A/B groups). Distance Learning students will maintain their distance learning assignments. In-person and distance learning schedules are below:
  - Mondays: modified schedule 8 - 12 or 8:30 - 12:30
  - Tuesday - Friday: Full day for all in-person and Distance Learning students
  - 8 - 2 or 8:30 - 2:30

# In-Person Instructional Model Updates

- Secondary - All Hybrid will be in-person (no A/B groups). Distance Learning students will maintain their Distance Learning assignment.
  - Monday - Friday: Full day for all students
  - HS: 7:40 - 2:55
  - MS: 9:00 - 3:30
  - DREAM Academy: Traditional Schedules
  - Central School Programs, Transition and SWEP: Traditional Schedules

# Considerations for Full-Return to In-Person Learning

- Numbers of students
- Social Distancing Requirements and Protocols
- Operations: Transportation, Food Services, and Safety
- Student Needs
- Thresholds of Instruction
- Resources
- Instructional Models
- Instructional Strategies
- Staff Assignments



# Instructional Model - Elementary School

## In-Person Instruction

- Classroom schedules will be established.
- Start of the day will include 30 minutes of SEL focused group time.
- Students will engage in more traditional in-person learning strategies with teachers.
- The focus will be on establishing and/or re-establishing site and classroom cultures for learning.
- Dependency on technology based learning will be diminished.
- Teachers will continue to implement the U-46-approved Standards-based curriculum with aligned formative and summative assessments.
- Specials schedules are still being finalized.

# Instructional Model - Elementary School Distance Learning

- Daily/weekly schedule established
  - Start of the day will include 30 minutes of SEL focused group time.
  - Whole group instruction
  - Small group instruction
  - Individual coaching/teaching time
  - Breakout rooms
  - Asynchronous learning
  - Lunch
  - Movement breaks
- Students may or may not be on-screen learning for the duration of the day.
- Strategies and schedule will be dependent upon developmentally-appropriate instruction.

# Instructional Model - Elementary Small School and Secondary Schools Blended Instruction

- Station Rotations
  - Small learning communities
  - Differentiated learning
- Breakout Rooms
- Flipped Learning
  - Pre-recorded or curated instructional resources
  - Ongoing access to instructional resources
  - Differentiated learning
- Choice Boards and Play Lists
  - Individualized instruction
- Whole Class Instruction - Concurrent Instructional Strategy
- Students may or may not be on-screen learning for the duration of the day or period.
- Elementary School start of the day will include 30 minutes of SEL focused group time.

# Priorities and Facets of All K - 6 Models



- **Safety.** In-person instruction will occur with all individuals wearing masks throughout the day, maintaining three feet of social distance, and washing hands frequently. Extra hand-washing stations have been installed across the district.
- **Instructional Time and Modes.** Every student will receive synchronous remote online or in-person instruction during the week. We will strive to achieve parity in education across all models.
- **Attendance.** Student attendance is taken once each day, 30 minutes after the start of the day, consistent with our current practice.
- **Lunch.** All in-person students will have lunch on site. Additional details about breakfast and snacks are forthcoming.
- **Modified Monday Schedule.** 8 - 12 or 8:30 - 12:30.
- **Standards-Based Learning and Assessments.** Following our grade level learning standards and assessments with social-emotional lessons embedded as much as possible.



# Priorities and Facets of All 7 - 12 Models

- **Safety.** In-person instruction will occur with all individuals wearing masks throughout the day, maintaining three feet of social distance, and washing hands frequently. Extra hand-washing stations have been installed across the district.
- **Attendance.** Student attendance is taken during each class period. Students who are scheduled to be in class for in-person instruction but attend via distance learning will be marked with a different attendance code. All high schools will continue to have an open campus, allowing students to arrive later or leave earlier if they do not have classes scheduled for the first or last period(s) of the day.
- **Lunch.** All schedules include a scheduled lunch period. Lunch will be served in the cafeteria. Plans are being made to ensure 6 feet of distancing and allow for outdoor dining.

# Priorities and Facets of All 7 - 12 Models

- **Instructional Time and Modes.** Every student will receive a minimum of 225 minutes per class period of synchronous remote online or in-person instruction during the week.
- **Scope of the Week.** Students who have elected to attend school in-person will attend school daily. The school day will follow the traditional 8 period schedule. All DREAM Academy programs and schedules will be restored to their traditional schedules. Students who have elected to remain in distance learning will follow the same schedule as students in-person and will attend class concurrently. All CSP, SWEP and Transition schedules will be restored to their traditional schedules.
- **Standards-Based Learning and Assessments.** Following our grade level learning standards and assessments with social-emotional lessons embedded as much as possible.

# Tentative Timeline

3/16/21 - Household communication

3/19/21 - Professional development day for teachers. Non-instructional day for students.

**3/22/21 - Professional development day for teachers. Non-instructional day for students.**

4/6/21 - Synchronous Learning Day due to election polling locations in U-46.

4/7/21 - First day of full day, every day, In-Person Instruction for all Hybrid Students.

4/13/21 - SAT; high schools will be synchronous and distance learning for grades 9, 10, 12.

**4/23/21 - Student instructional day.**

