



College and Career Academy

A Small Learning Community that provides a rigorous, focused student learning experience.

All high schools will house the same five College and Career Academies.

Magnet Academy

The five academies currently housed at each high school to which all U-46 students may apply.

BHS – STEM
EHS – Gifted/IB
LHS – Visual and Performing Arts
SEHS – BEACON
SHS – World Language and International Studies

Pathway

A multi-year sequence of courses that will prepare students for post-secondary success.

Each College and Career Academy will house multiple pathways. Pathways will be determined based on a variety of selection criteria.

CAREER ACADEMIES, AFTER MORE THAN FOUR DECADES OF DEVELOPMENT AND THREE DECADES OF EVALUATION, HAVE BEEN FOUND BY A CONCLUSIVE RANDOM ASSIGNMENT STUDY **TO BE EFFECTIVE IN IMPROVING OUTCOMES FOR STUDENTS DURING AND AFTER HIGH SCHOOL.** CAREER ACADEMIES HAVE THEREFORE BECOME THE **MOST DURABLE AND BEST-TESTED COMPONENT** OF A HIGH SCHOOL REFORM STRATEGY TO PREPARE STUDENTS FOR **BOTH COLLEGE AND CAREER**

STERN, DAVID, CHARLES DAYTON, AND MARILYN RABY. "CAREER ACADEMIES: A PROVEN STRATEGY TO PREPARE HIGH SCHOOL STUDENTS FOR COLLEGE AND CAREERS."
UNIVERSITY OF CALIFORNIA, BERKELEY: CAREER ACADEMY SUPPORT NETWORK, 2010.

Since September 24, 2018

Initial Plan	Current Status
EXPLORE event in the Fall	All 8th grade attended on September 12, 2018. SY20 date of September 11, 2019 is confirmed
Engage stakeholders for feedback on the updated plan	Developed a Pathways video and hosted numerous Town Hall sessions
Develop a framework and selection criteria to ensure Pathway viability	Selected relevant metrics to review potential Pathways

Since September 24, 2018

Initial Plan	Current Status
Call to committee for each Academy to work on the development of pathways and their course sequences	Freshman seminar committee started SEL Standards included in all curriculum moving forward
Call to committee for Counseling curriculum	Spring of 2019
Revise selection criteria for students applying to Magnet Academies	Director of Pathways is working with Academy Divisionals to research, develop, and propose revised criteria

Since September 24, 2018

Initial Plan	Current Status
Partner with Curricular Committees to ensure embedded college and career exploration and project based learning in existing middle school curriculum	Rewriting Middle School FACS, pre-engineering, and computers Call to committee to go out in March 2019
Facilities walkthroughs to determine potential capital projects to begin Summer of 2020	3 walks have been completed and 3 more will be complete by March 2019

Since September 24, 2018

We've presented the Pathways update to and received feedback through:

- 7 Community Engagement Sessions
- Voluntary staff meetings at all secondary sites
- Instructional Council
- Curriculum and Instruction Plus
- CAC Curriculum Committee
- ECC Board of Trustees
- ACE Operating and Governing Boards



Summary of Feedback

Overall, feedback regarding the draft pathways provided was positive.

Additional input regarding the topics that should be taught within each pathway was given.

Two questions that continued to be asked were about sustainability and whether students were able to attend schools outside of their neighborhood.



Metrics to Guide Decisions

Enrollment Trends

Student Interest

Portable Industry Credential
and/or Early College Credit

Student Achievement

Job Market

Facility Capacity



STEM ACADEMY

- Allied Health
- Architecture
- Automotive
- Aviation
- Engineering
- Information Technology
- Manufacturing
- Nutrition/Culinary Science
- Professional Wellness/Medical Practitioner
- Sustainability Science
- Veterinary Science
- Welding

ARTS ACADEMY

- Acting
- Music Recording and Production
- Theater Production
- Visual Arts

BUSINESS ACADEMY

- Entrepreneurship
- Finance and Accounting
- Public Relations
- Management and Leadership

HUMANITIES ACADEMY

- Communications
- Education
- Law
- Public Safety
- Social Services

LIBERAL ARTS ACADEMY

- Traditional High School Model
- Early College Model
 - During the winter of their sophomore year, students apply to take courses at ECC their Junior and Senior Year
 - Students graduate with a High School Diploma and Associate Degree
 - 50 students

Our Essential Question

How might we work to provide ongoing support to our secondary students, teachers, and administrators through the development of smaller learning communities?

Viable Pathways Curriculum

College and Career Support

Teacher Collaboration

Professional Learning

Leadership Structure

How Will We Measure Readiness?

*All data will be disaggregated

- English Language Arts Proficiency and Growth (PSAT and SAT)
- Math Proficiency and Growth (PSAT and SAT)
- 9th Grade On-Track
- % of Students in Grades 10-12 on pace to Graduate
- Grade Distribution
- Graduation Rate
- College Enrollment
- College Persistence

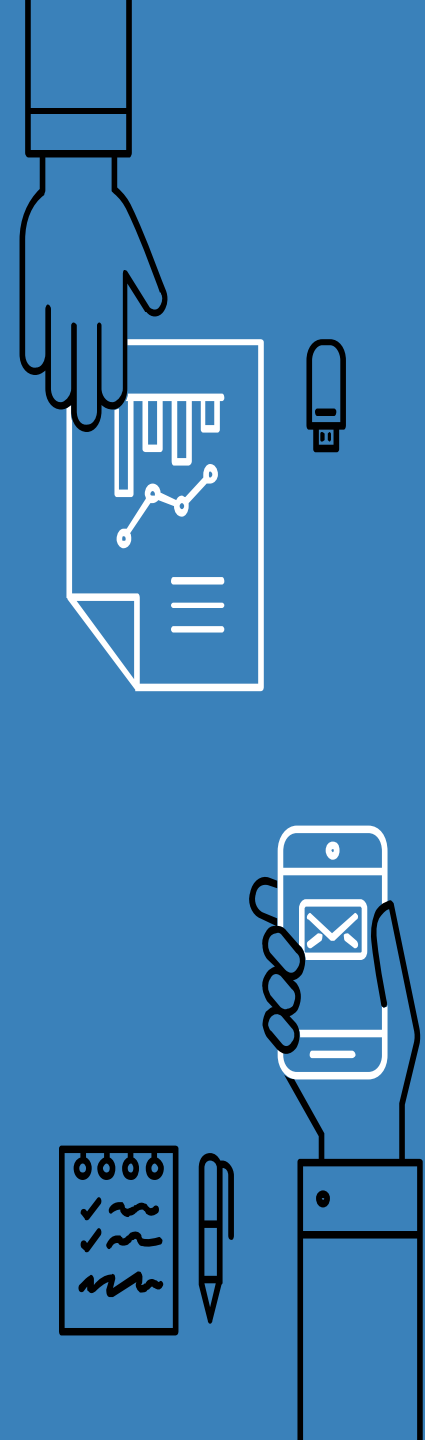
*We will also be working to determine a way to track where students go after graduation if they do not enroll into college

What's happening in Middle School?

Moving from quarter-long to semester-long courses

- Art Curriculum
- Core Curriculum
- PE Curriculum
- To Be Re-Written (Spring '19):
 - ◆ FACS Curriculum
 - ◆ Pre-Engineering Curriculum
 - ◆ Computer Science Curriculum

Students will have options to explore elective courses throughout middle school



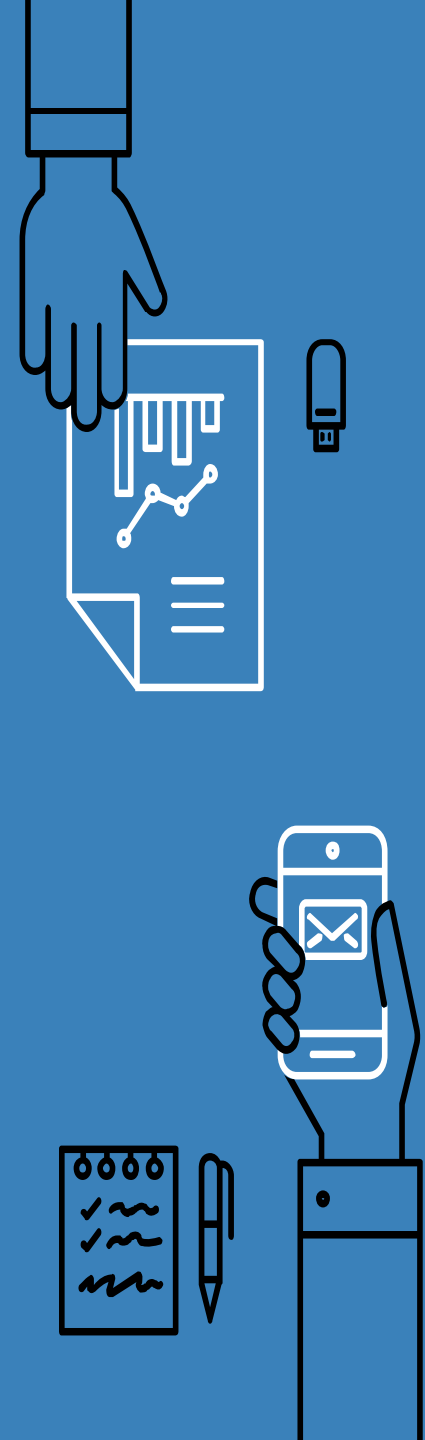
What's happening in Middle School?

Teaming in middle school occurs when the same cohort of students travel between a team of teachers.

Teaming is a best practice and research shows teaming along with common planning time increases student achievement.*

Each team would consist of approximately 150 student who share the same 2-3 core subject area teachers.

*Mertens, S. B., & Flowers, N. (2006). Middle Start's impact on comprehensive middle school reform. Middle Grades Research Journal, 1(1), 1-26.



Next Steps

- Continue to implement initial work plan
- Develop Pathways sub-committees and create a strategic plan that encompasses all aspects of Pathways planning
 - ◆ College and Career Exploration
 - ◆ Pathways Curriculum and Professional Learning
 - ◆ Transportation and Logistics
 - ◆ Facilities
 - ◆ Communication
 - ◆ Staffing
- Bring forward IB proposal and Dual-Credit proposal for Board approval
- Develop a plan to pilot work-based learning opportunities in partnership with Alignment

