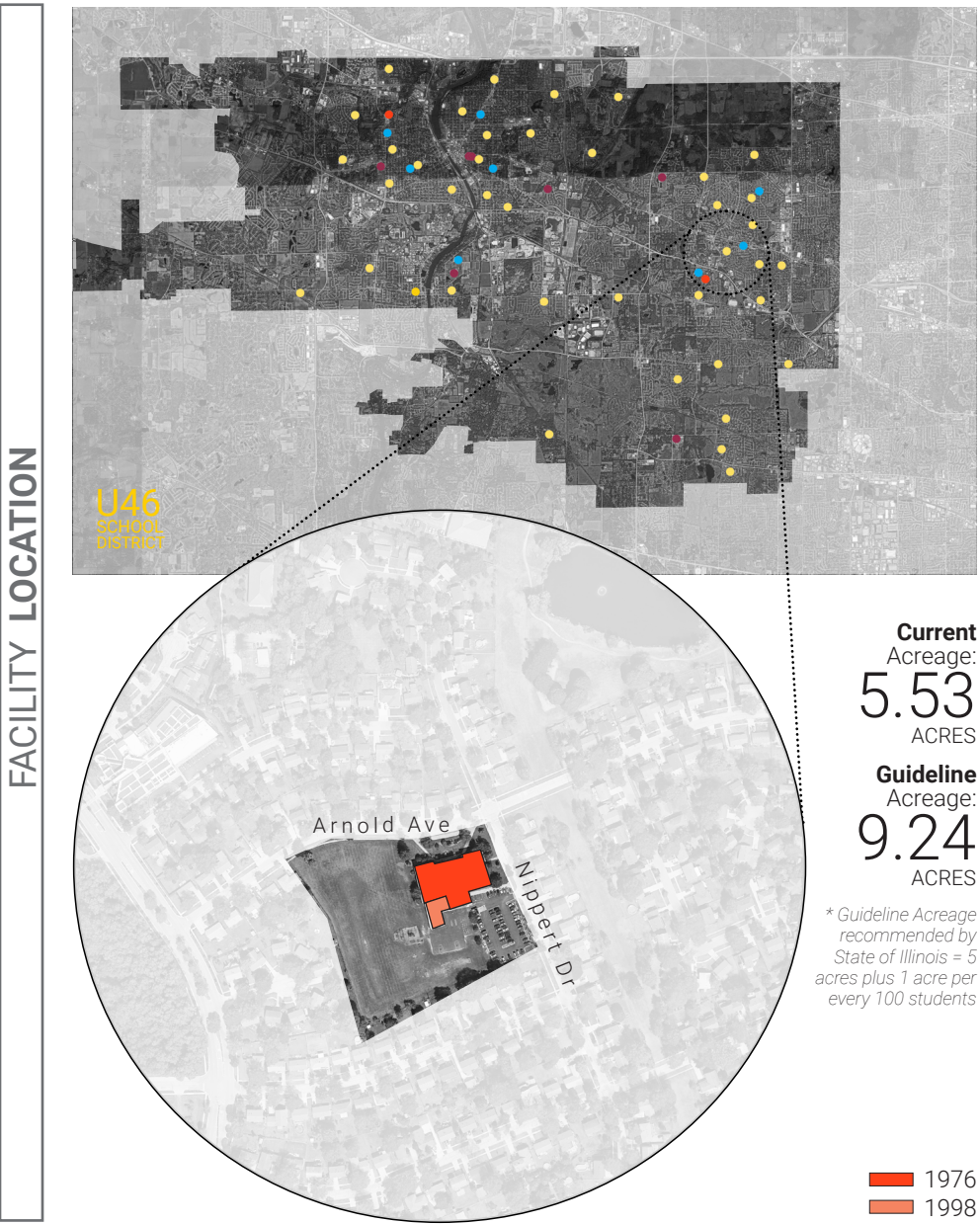
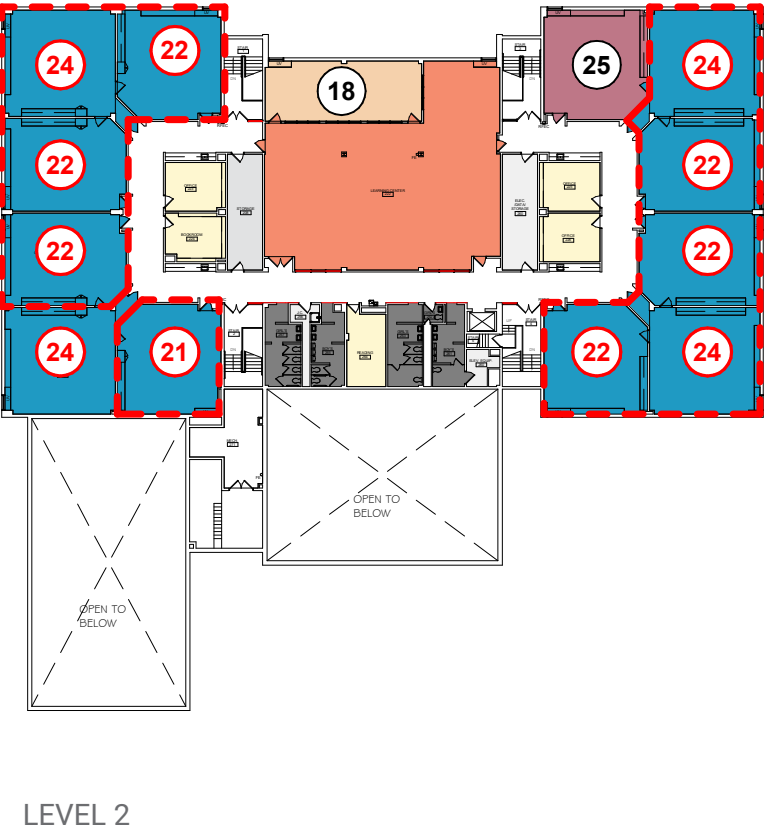
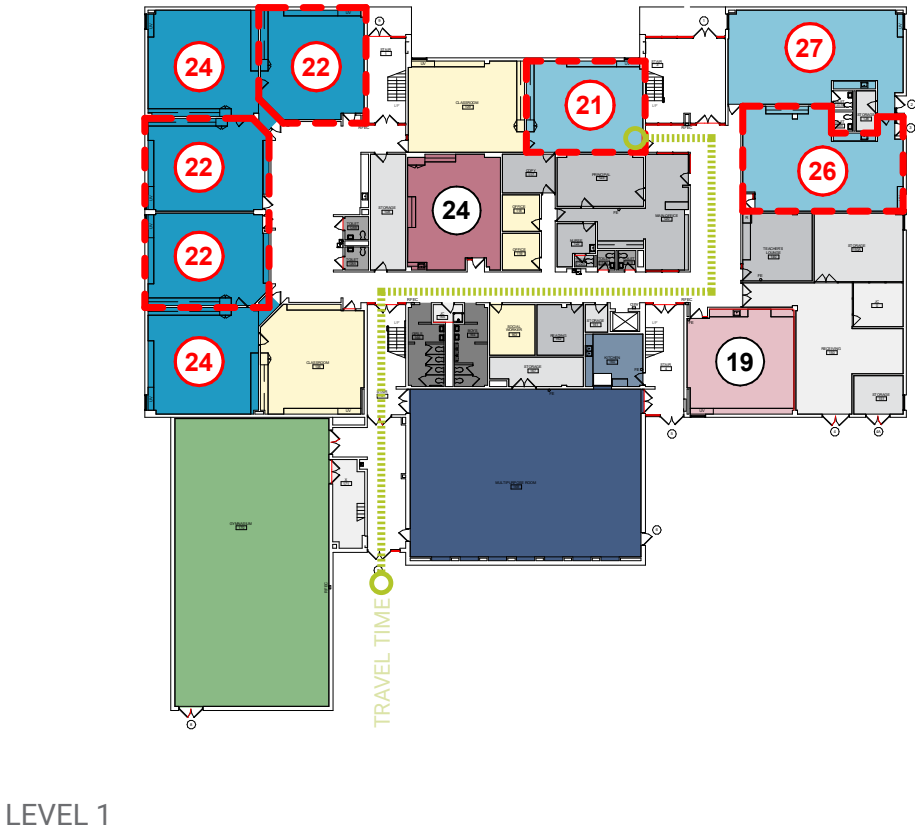




# Heritage Elementary School

507 Arnold Ave, Streamwood, IL 60107

BUILDING SUMMARY			
Gross SF	48,126	Number of Levels	2
Year Built	1976	Number of Additions	1



### ENROLLMENT METRICS

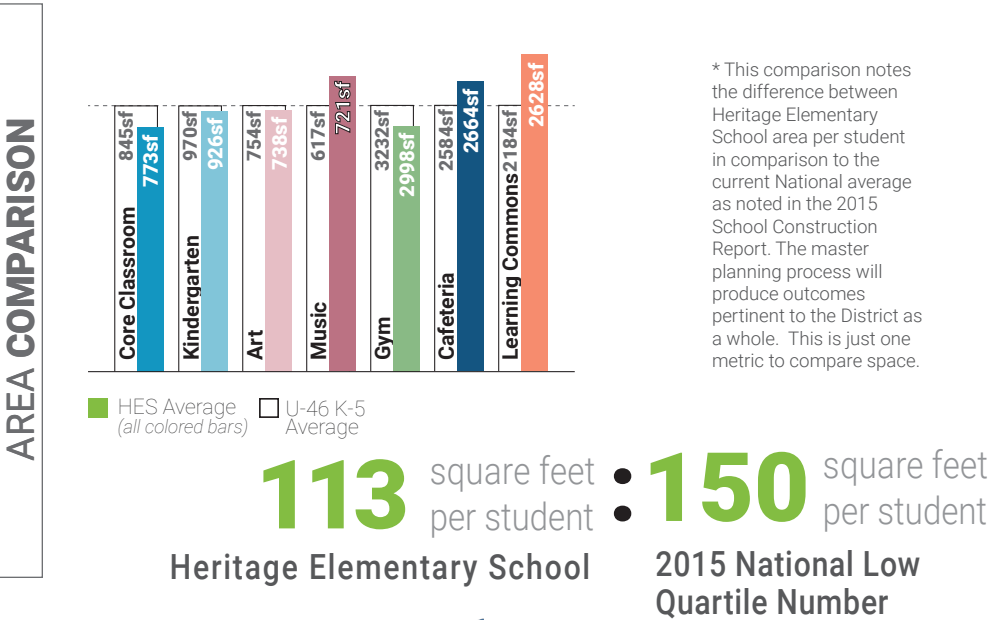
Occupancy**	767
Effective Capacity	437
Total Enrollment	424

**Occupancy:** the maximum number of people that can be housed in a space in accordance with the building/fire code

**\*\*NOTE:** Occupancy is NOT the recommended number of students for a space, it is the maximum allowed by code.

**Effective Capacity:** the amount of students a school can effectively support based on the District's current practices and future vision for teaching and learning. This is calculated based on ISBE's square footage per student guideline. Calculated based on core classrooms, science labs and Special Education spaces.

**Enrollment:** number of students that attended the facility in 2019-2020.



### TRAVEL

**4-6 MIN** Furthest approximate travel time from one location to another for an average Kindergarten Student.

**3-5 MIN** Furthest approximate travel time from one location to another for an average Fourth Grade Student.

Administration

Building Support

Cafe Support

Commons / Cafeteria

Core Classroom

Elective Classroom

Gym / Fitness

Kindergarten / ECC

Learning Center

Media Lab

Performance Venue

Performing Arts Classroom

Resources

Science Lab

Special Education

Stem / Hands-On Learning

Restrooms

Student Support

Visual Arts

Travel Path

Under-sized space

Room Capacity based on ISBE Guidelines

Room Capacity based on ISBE Guidelines (not included in Effective Capacity)

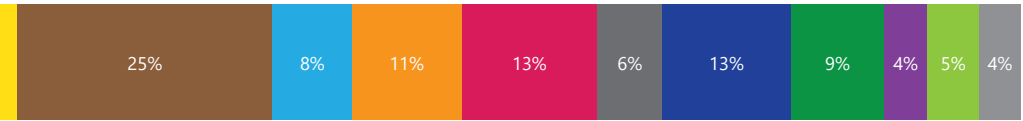
January 27, 2021

<b>Spatial Educational Adequacy(25%)</b>	<b>D</b>	<b>Facility Condition(35%)</b>	<b>C</b>
(Data collected through Staff Survey)	<b>6.0/10</b>	FCI	.19
Physical Features	7.1/10	<b>Water Usage(5%)</b>	<b>C</b>
Environment Supports Variety	5.2/10	Gallons/SF	11.2
Visual Stimulation	6.3/10	<b>Energy Usage(10%)</b>	<b>C</b>
Future Readiness	5.5/10	<b>Total EUI</b>	<b>52.1kBTU/SF/yr</b>
<b>Building Allocation(25%)</b>	<b>D</b>	Electric	22.6kBTU/SF/yr
Gross SF/student	113	Gas	29.5kBTU/SF/yr
Site Acreage/Guideline	60%		
Mobiles in Use/Basement Used	No/No		

AGGREGATED FACILITY GRADE C-

Educational Adequacy grades were determined by a survey issued to staff. Square Foot/Student grades were determined by building area and enrollment. Facility grades are determined building assessments. Water grades were determined by comparing utility data to the Commercial Buildings Energy Consumption Survey. Energy grades were deteremined by comparing utility data to the US Dept of Energy's Building Performance Database. Percent in parenthesis indicates weight of category in aggregate facility grade.

Observing representative classrooms within the school through a typical day allows the design team to quantify how learning spaces are used. Measurements are averaged from all classrooms visited.



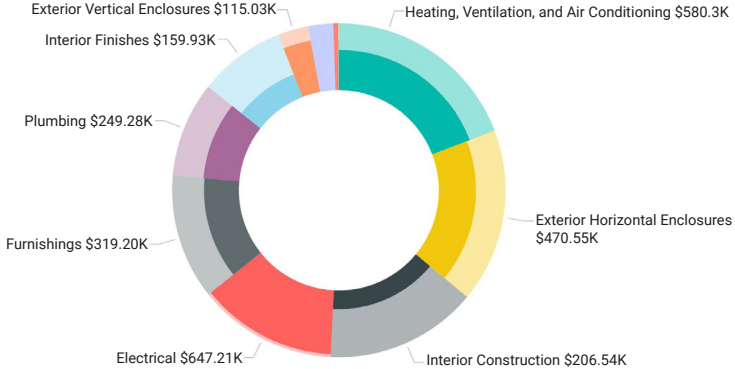
- Creative Brainstorming
- Direct Instruction
- Focused Study
- Group Discussion
- Hands-On Learning
- Housekeeping
- Physical Activities
- Practicing Autonomy
- Presenting or Performing
- Research & Reflection
- Transition

What's a Listening Tour?

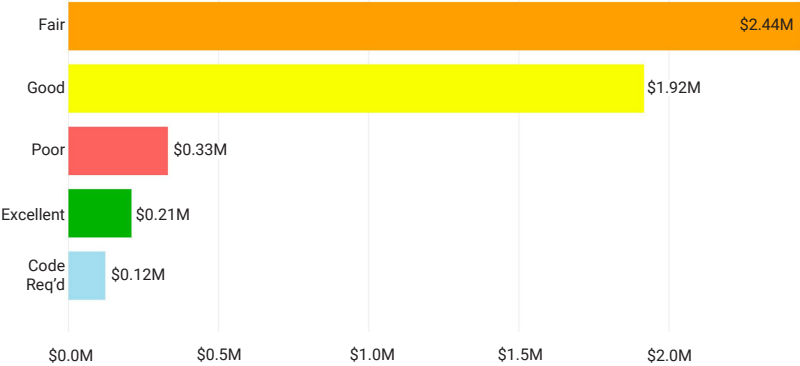
Staff surveys (Listening Tours) were sent to each school where faculty gave input about the strengths and weaknesses of the building. The following five comments highlight common themes and concerns.

Listening Tour Comments From Staff

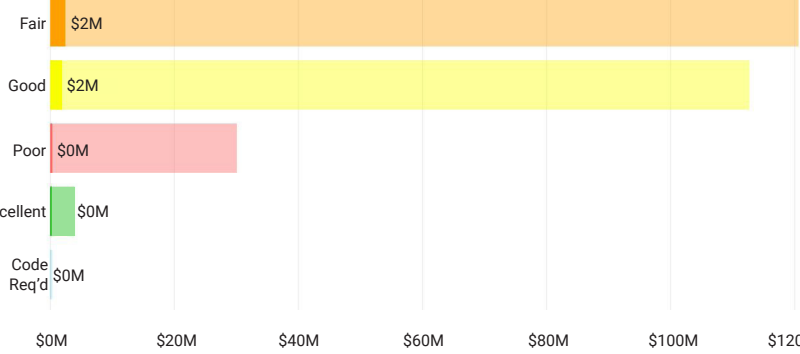
- Not enough space for students to collaborate and work outside the classroom.
- The building feels too warm in some areas and too cold in other areas.
- Classrooms need more storage and upgraded finishes. The paint on the walls is chipping.
- Teachers need the space to collaborate and explore. Technology impedes this.
- The office layout is not safe. Guests do not have to arrive directly to the office and is too much for staff to look at and know who is coming and going.
- The library needs updating. The shelves are old and falling apart and the books get damaged as a result.



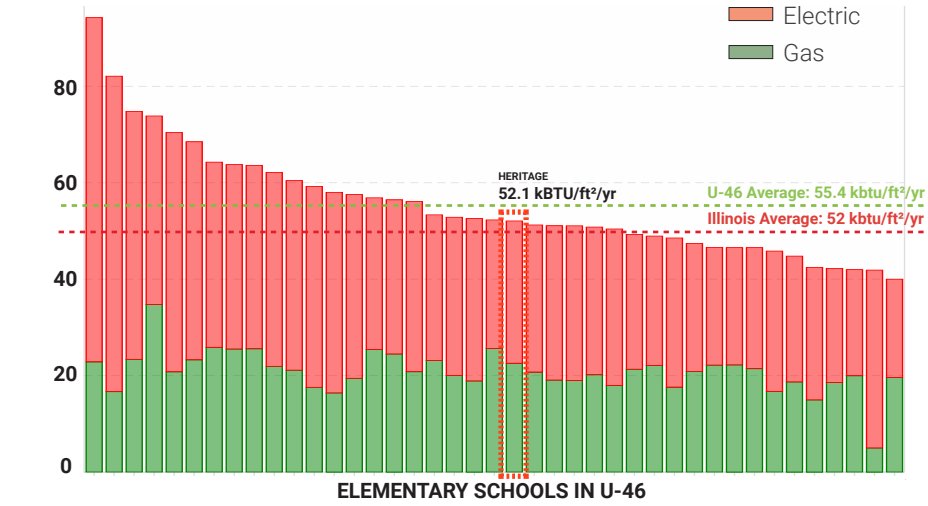
This chart indicates the approximate cost of deferred and anticipated maintenance (in dollars) of items assessed by building system. Highlighted items indicate those items in immediate need, code requirement, poor and fair condition.



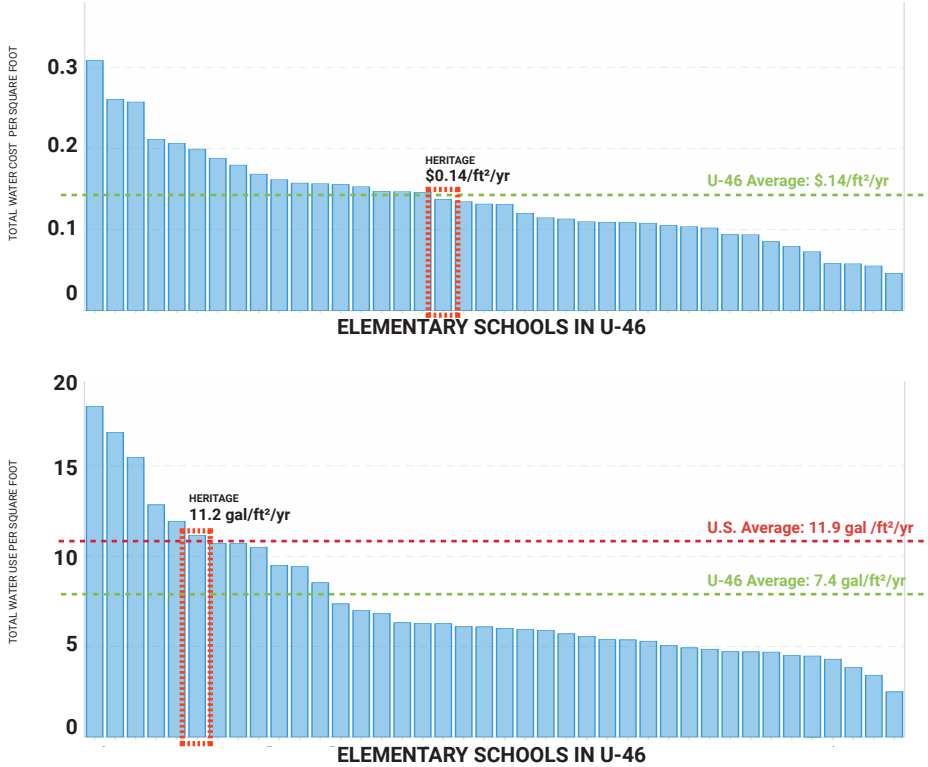
This chart indicates the approximate cost of deferred and anticipated maintenance (in dollars) based on condition of assessed items.



This chart indicates the approximate cost of deferred and anticipated maintenance (in dollars) based on condition of assessed items in relation to the entire cohort of buildings.



Energy Use Intensity (EUI) is a key metric that expresses a building's energy use as a function of its size. Generally, a low EUI signifies good energy performance



Water usage is a key metric that expresses a school's water use and total cost of water in comparison to the other elementary schools in the district.

How is this information collected?

The goal of the DLR Group integrated design team is to **collect multiple qualitative and quantitative data points** around the same set of items – for example energy use, air quality, or learning behavior – **in order to form a holistic picture**. The team collects these data points through the use of sensors (in the space for 1-7 days), spot measurement equipment, expert walkthroughs, focus groups, surveys, and ethnographic observation techniques. The results are validated by cross-checking data points, such as a survey answer and a spot measurement, that should relate to one another.