



Kenyon Woods Middle School

1515 Raymond Street, South Elgin, IL 60177

BUILDING SUMMARY			
Gross SF	135,411	Number of Levels	2
Year Built	2004	Number of Additions	0

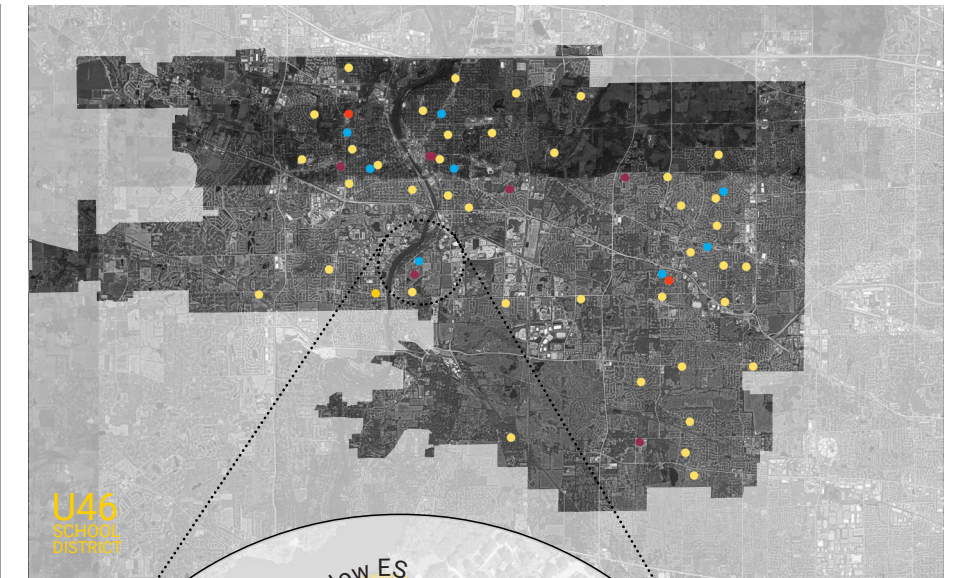


LEVEL 1

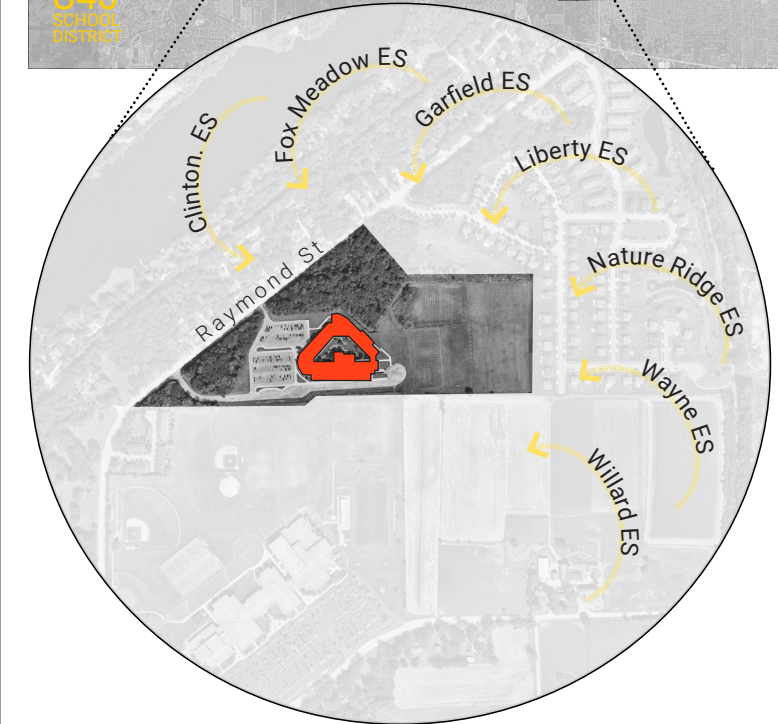
Phase 1 Snapshot



FACILITY LOCATION



U46
SCHOOL
DISTRICT



Current
Acreage:
35.65
ACRES

Guideline
Acreage:
24.62
ACRES

* Guideline Acreage
recommended by
State of Illinois = 5
acres plus 1 acre per
every 100 students

2004

TRAVEL

4-6 MIN Furthest approximate travel time
from one location to another for an
average **Middle School Student**.

PLAN KEY

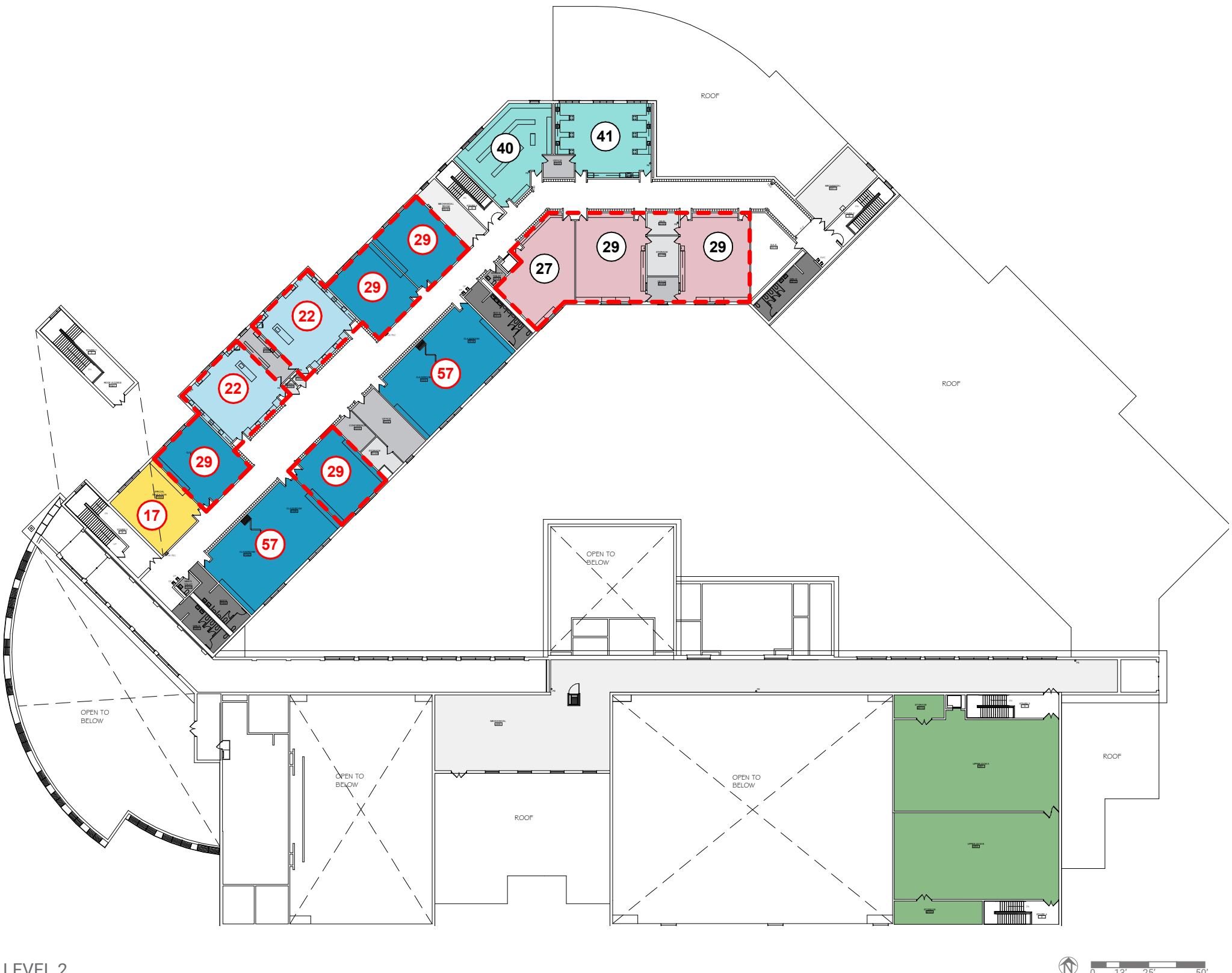
- Administration
- Building Support
- Cafe Support
- Commons / Cafeteria
- Core Classroom
- Elective Classroom
- Gym / Fitness
- Kindergarten / ECC
- Learning Center
- Media Lab
- Performance Venue
- Performing Arts Classroom
- Resources
- Science Lab
- Special Education
- Stem / Hands-On Learning
- Restrooms
- Student Support
- Visual Arts
- Travel Path
- Under-sized space
- Room Capacity based on ISBE Guidelines
- Room Capacity based on ISBE Guidelines (not included in Effective Capacity)

January 27, 2021



Kenyon Woods Middle School

1515 Raymond Street, South Elgin, IL 60177



LEVEL 2

ENROLLMENT METRICS

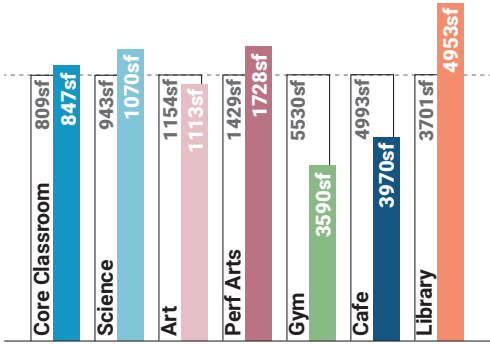
Occupancy**	1467
Effective Capacity	879
Total Enrollment	962

Occupancy: the maximum number of people that can be housed in a space in accordance with the building/ fire code
****NOTE:** Occupancy is NOT the recommended number of students for a space, it is the maximum allowed by code.

Effective Capacity: the amount of students a school can effectively support based on the District's current practices and future vision for teaching and learning. This is calculated based on ISBE's square footage per student guideline. Calculated based on core classrooms, science labs and Special Education spaces.

Enrollment: number of students that attended the facility in 2019-2020.

AREA COMPARISON



* This comparison notes the difference between Kenyon Woods Middle School area per student in comparison to the current National average as noted in the 2015 School Construction Report. The master planning process will produce outcomes pertinent to the District as a whole. This is just one metric to compare space.

140 square feet per student : **147** square feet per student
Kenyon Woods Middle School : 2015 National Low Quartile Number*

PLAN KEY

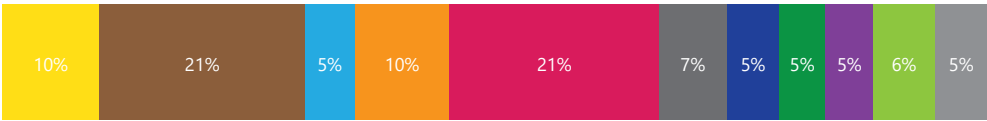
- Administration
- Building Support
- Cafe Support
- Commons / Cafeteria
- Core Classroom
- Elective Classroom
- Gym / Fitness
- Learning Center
- Media Lab
- Performance Venue
- Performing Arts Classroom
- Resources
- Science Lab
- Special Education
- Stem / Hands-On Learning
- Restrooms
- Student Support
- Visual Arts
- Travel Path
- Under-sized space
- Room Capacity based on ISBE Guidelines (10)
- Room Capacity based on ISBE Guidelines (not included in Effective Capacity) (10)

Spatial Educational Adequacy(25%)	C	Facility Condition(35%)	C
(Data collected through Staff Survey)	7.4/10	FCI	.15
Physical Features	8.0/10	Water Usage(5%)	A
Environment Supports Variety	7.6/10	Gallons/SF	4.7
Visual Stimulation	6.7/10	Energy Usage(10%)	F*
Future Readiness	7.0/10		
Building Allocation(25%)	A	Total	92.8kBTU/SF/yr
Gross SF/student	140	Electric	43.3kBTU/SF/yr
Site Acreage/Guideline	145%	Gas	49.5kBTU/SF/yr
Mobiles in Use/Basement Used	No/No	2020 EUI Total	68.5kBTU/SF/yr

AGGREGATED FACILITY GRADE B-

Educational Adequacy grades were determined by a survey issued to staff. Square Foot/Student grades were determined by building area and enrollment. Facility grades are determined building assessments. Water grades were determined by comparing 2019 utility data to the Commercial Buildings Energy Consumption Survey. Energy grades were deteremined by comparing utility data to the US Dept of Energy's Building Performance Database. Percent in parenthesis indicates weight of category in aggregate facility grade.
* Energy Usage Grade is based on 2019 EUI data, not 2020 EUI data. The decrease in EUI from 2019 to 2020 is a result of both major HVAC equipment upgrades as well as operational changes due to COVID-19.

Activity mapping is based on survey data (Week in the Life) collected by teachers throughout the district over the course of one week. The teachers provided the learning activity and amount of time spent in that activity. Data was aggregated for the school and is represented by the average percent of time spent in the activity.



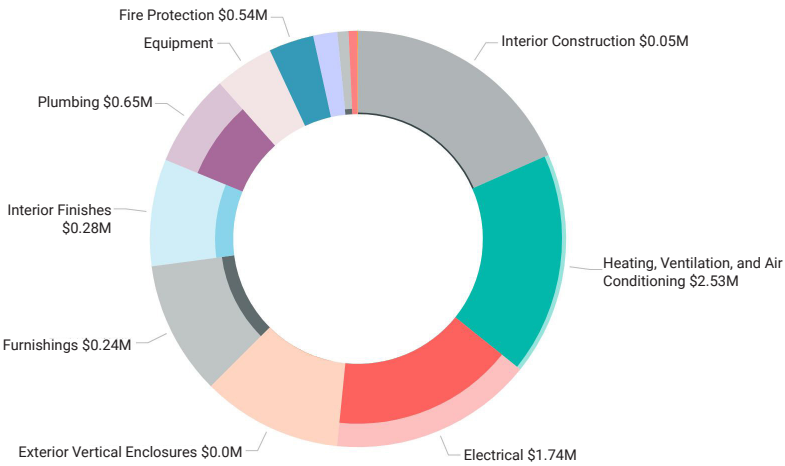
- Creative Brainstorming
- Direct Instruction
- Focused Study
- Group Discussion
- Hands-On Learning
- Housekeeping
- Physical Activities
- Practicing Autonomy
- Presenting or Performing
- Reserach & Reflection
- Transition

What's a Listening Tour?

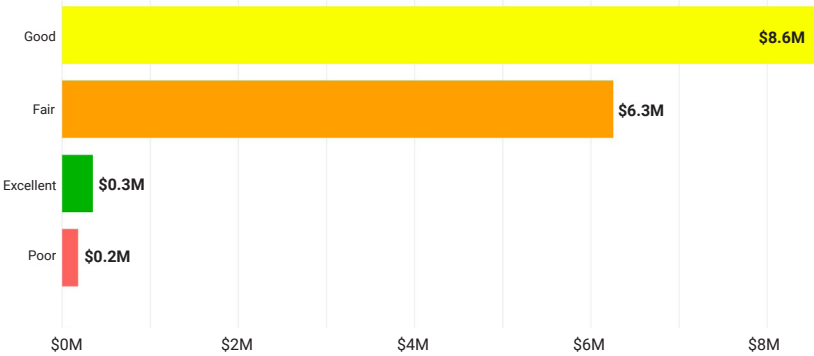
Staff surveys (Listening Tours) were sent to each school where faculty gave input about the strengths and weaknesses of the building. The following comments highlight common themes and concerns.

Listening Tour Comments

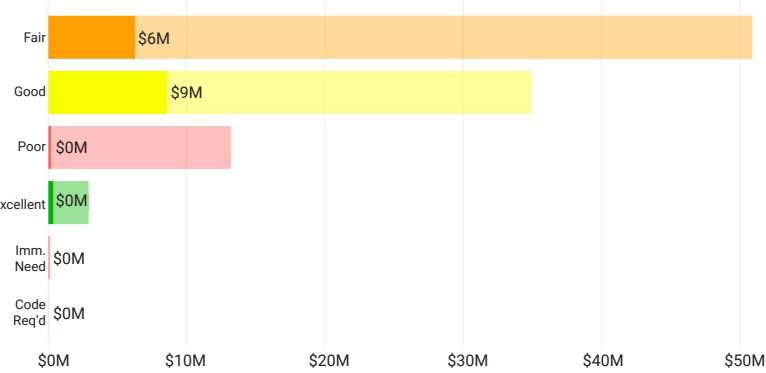
- The temperatures throughout the building are inconsistent.
- There is a lot of good natural light in the building.
- Classrooms are overcrowded and there isn't much room for maneuvering between desks. The desks are too big for the space.
- Access to spaces that are quiet for small groups is desirable for students to work on projects.
- There is traffic congestion in the hallways, especially during lunch periods.
- The overall building layout is great with the “noisy” classrooms away from traditional classrooms.



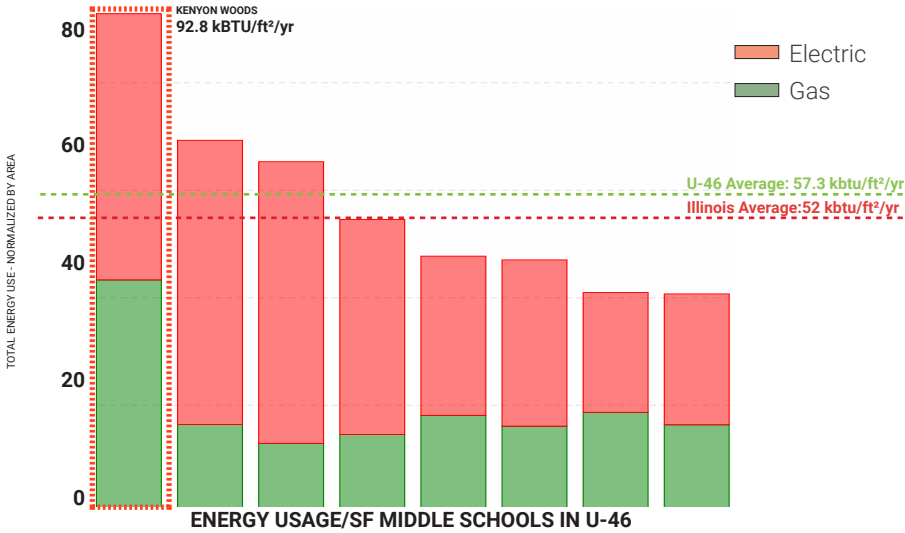
This chart indicates the approximate cost of deferred and anticipated maintenance (in dollars) of items assessed by building system. Highlighted items indicate those items in immediate need, code requirement, poor and fair condition.



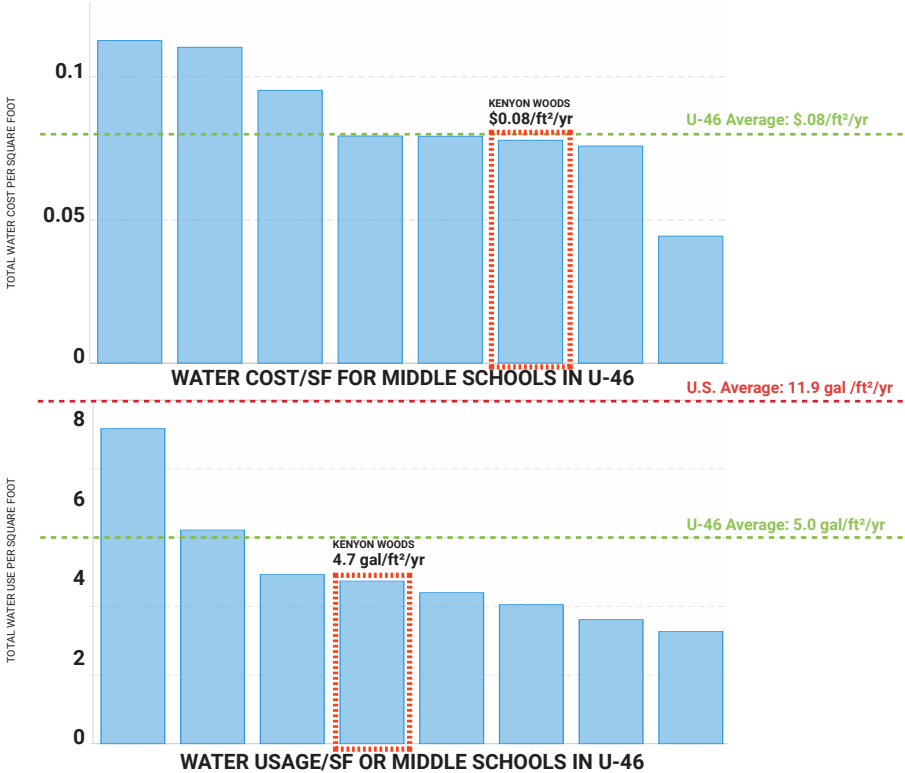
This chart indicates the approximate cost of deferred and anticipated maintenance (in dollars) based on condition of assessed items.



This chart indicates the approximate cost of deferred and anticipated maintenance (in dollars) based on condition of assessed items in relation to the entire cohort of buildings.



Energy Use Intensity (EUI) is a key metric that expresses a building's energy use as a function of its size. Generally, a low EUI signifies good energy performance



Water usage is a key metric that expresses a school's water use and total cost of water in comparison to the other middle schools in the district.

How is this information collected?

The goal of the DLR Group integrated design team is to **collect multiple qualitative and quantitative data points** around the same set of items – for example energy use or learning behavior – **in order to form a holistic picture**. The team collects these data points through the use of utility analysis, expert walkthroughs, focus groups, surveys, and ethnographic observation techniques. The results are validated by cross-checking data points, such as a survey answer and a spot measurement, that should relate to one another.