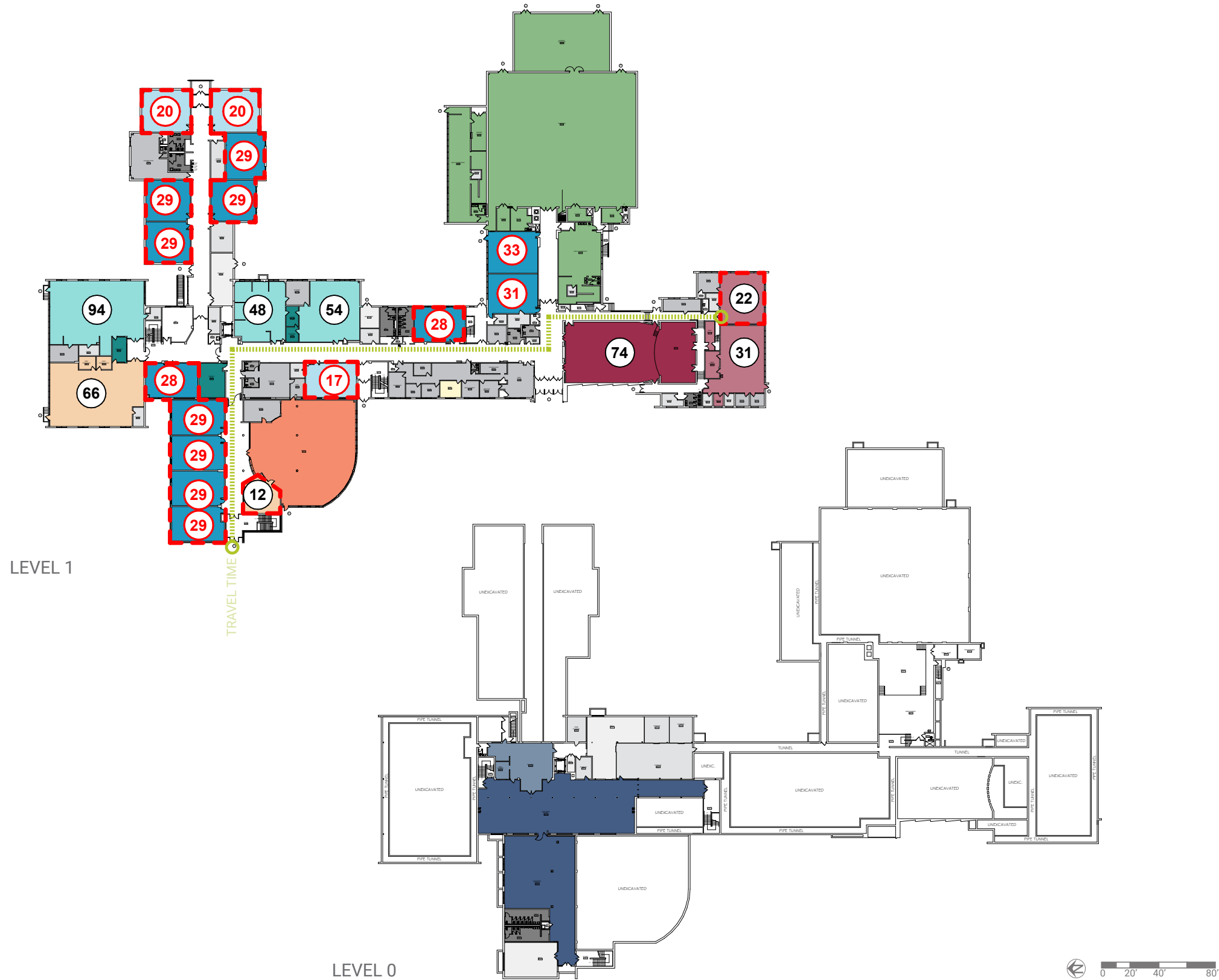




Kimball Middle School

451 North McLean Blvd., Elgin, IL 60123

BUILDING SUMMARY			
Gross SF	127,354	Number of Levels	3
Year Built	1959	Number of Additions	2

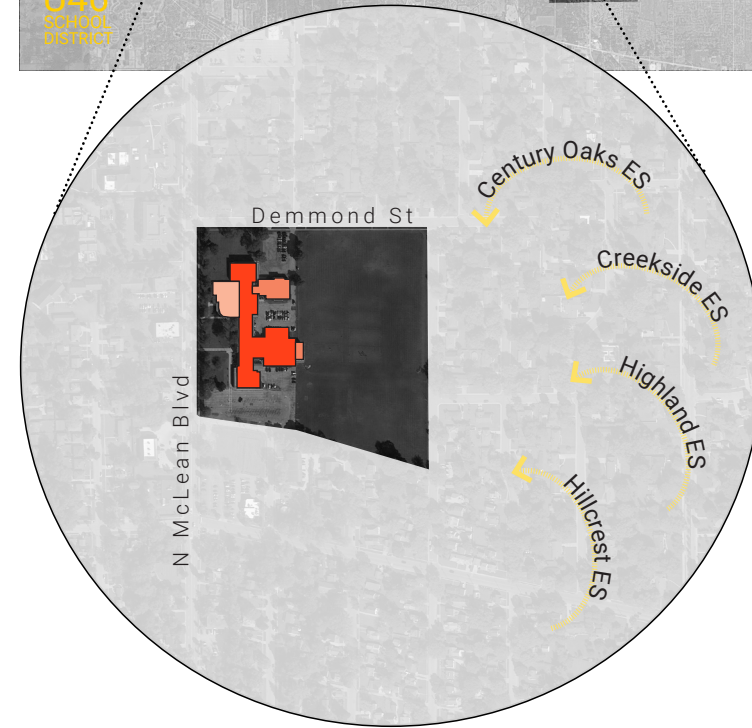
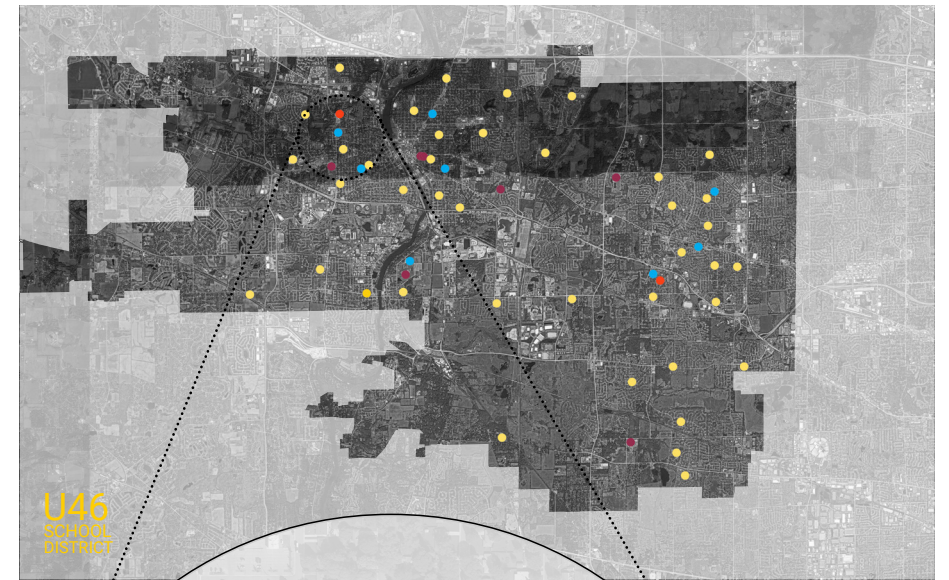


LEVEL 1

LEVEL 0



FACILITY LOCATION



Current
Acreage:
18.34
ACRES

Guideline
Acreage:
21.26
ACRES

* Guideline Acreage recommended by State of Illinois = 5 acres plus 1 acre per every 100 students

*School has IGA with Park District

- 1959
- 1998
- 2002

TRAVEL

3-5 MIN Furthest approximate travel time from one location to another for an average **Middle School Student**.

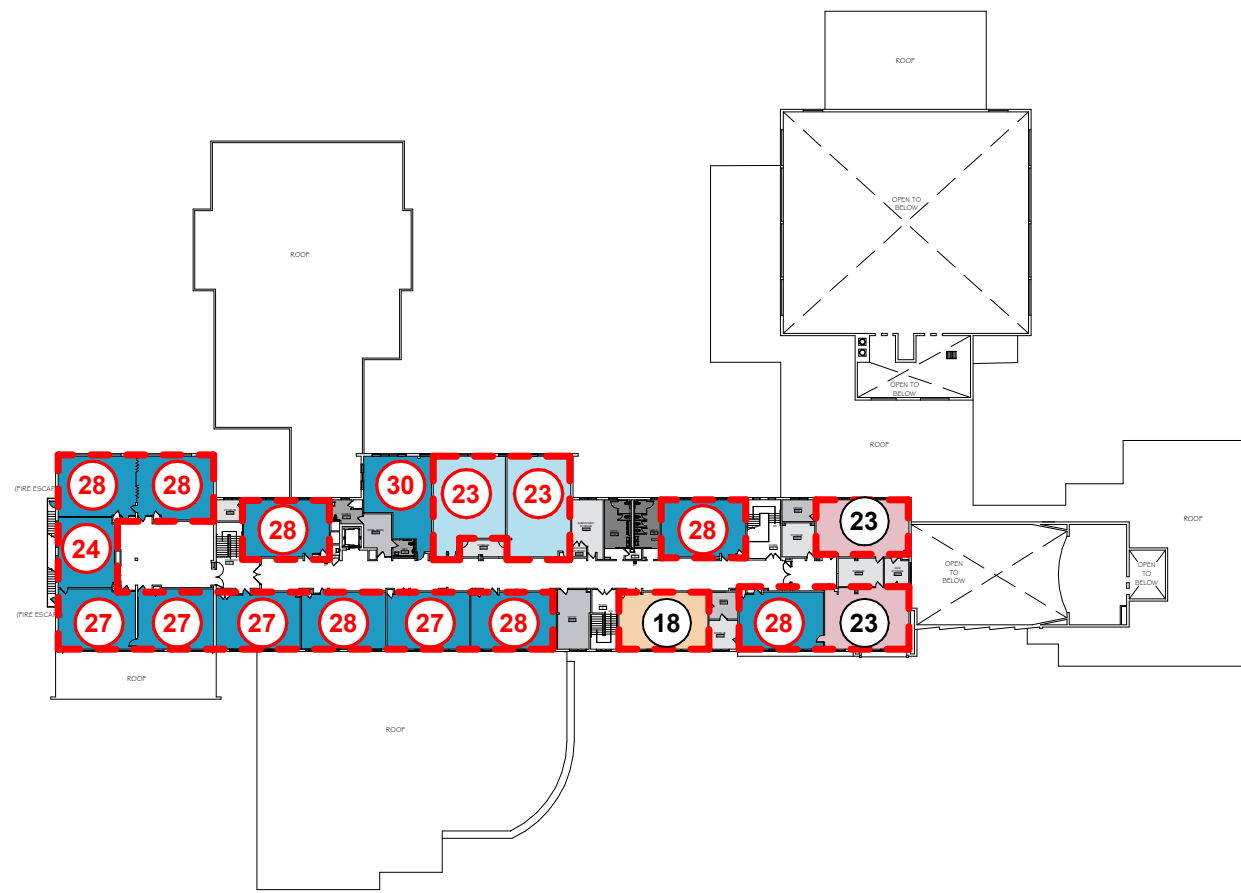
PLAN KEY

- | | | |
|---|---|---|
| Administration | Performance Venue | Travel Path |
| Building Support | Performing Arts Classroom | Under-sized space |
| Cafe Support | Resources | 10 Room Capacity based on ISBE Guidelines |
| Commons / Cafeteria | Science Lab | 10 Room Capacity based on ISBE Guidelines (not included in Effective Capacity) |
| Core Classroom | Special Education | 10 Room Capacity based on ISBE Guidelines (not included in Effective Capacity) |
| Elective Classroom | Stem / Hands-On Learning | 10 Room Capacity based on ISBE Guidelines (not included in Effective Capacity) |
| Gym / Fitness | Restrooms | 10 Room Capacity based on ISBE Guidelines (not included in Effective Capacity) |
| Kindergarten /ECC | Student Support | 10 Room Capacity based on ISBE Guidelines (not included in Effective Capacity) |
| Learning Center | Visual Arts | 10 Room Capacity based on ISBE Guidelines (not included in Effective Capacity) |
| Media Lab | | |



Kimball Middle School

451 North McLean Blvd., Elgin, IL 60123



LEVEL 2

Phase 1 Snapshot



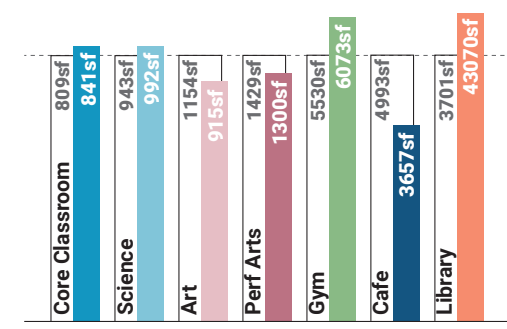
ENROLLMENT METRICS

Occupancy**	1310
Effective Capacity	813
Total Enrollment	626

Occupancy: the maximum number of people that can be housed in a space in accordance with the building/ fire code
****NOTE:** Occupancy is NOT the recommended number of students for a space, it is the maximum allowed by code.

Effective Capacity: the amount of students a school can effectively support based on the District's current practices and future vision for teaching and learning. This is calculated based on ISBE's square footage per student guideline. Calculated based on core classrooms, science labs and Special Education spaces.
Enrollment: number of students that attended the facility in 2019-2020.

AREA COMPARISON



* This comparison notes the difference between Kimball Middle School area per student in comparison to the current National average as noted in the 2015 School Construction Report. The master planning process will produce outcomes pertinent to the District as a whole. This is just one metric to compare space.

203 square feet per student
Kimball Middle School

147 square feet per student
2015 National Low Quartile Number*

PLAN KEY

- Administration
- Performance Venue
- Travel Path
- Building Support
- Performing Arts Classroom
- Under-sized space
- Cafe Support
- Resources
- Room Capacity based on ISBE Guidelines (10)
- Commons / Cafeteria
- Special Education
- Room Capacity based on ISBE Guidelines (not included in Effective Capacity) (10)
- Core Classroom
- Stem / Hands-On Learning
- Elective Classroom
- Restrooms
- Gym / Fitness
- Student Support
- Learning Center
- Visual Arts
- Media Lab

January 27, 2021

FACILITY GRADES

Spatial Educational Adequacy(25%) C

(Data collected through Staff Survey)	7.0/10
Physical Features	7.6/10
Environment Supports Variety	7.3/10
Visual Stimulation	6.7/10
Future Readiness	6.4/10

Building Allocation(25%) C

Gross SF/student	203
Site Acreage/Guideline	86%
Mobiles in Use/Basement Used	No/Yes

*School has IGA with Park District

Facility Condition(35%) C

FCI	.21
-----	-----

Water Usage(5%) A

Gallons/SF	3.3
------------	-----

Energy Usage(10%) B

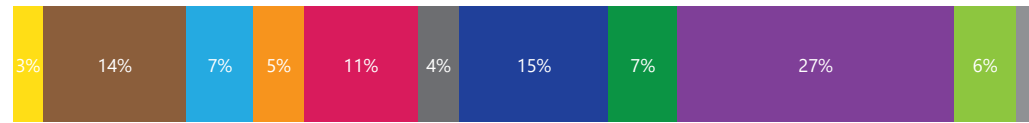
Total	47.0kBTU/SF/yr
Electric	16.1kBTU/SF/yr
Gas	31.0kBTU/SF/yr

AGGREGATED FACILITY GRADE B-

Educational Adequacy grades were determined by a survey issued to staff. Square Foot/Student grades were determined by building area and enrollment. Facility grades are determined building assessments. Water grades were determined by comparing utility data to the Commercial Buildings Energy Consumption Survey. Energy grades were determined by comparing utility data to the US Dept of Energy's Building Performance Database. Percent in parenthesis indicates weight of category in aggregate facility grade.

ACTIVITY MAPPING

Activity mapping is based on survey data (Week in the Life) collected by teachers throughout the district over the course of one week. The teachers provided the learning activity and amount of time spent in that activity. Data was aggregated for the school and is represented by the average percent of time spent in the activity.



- Creative Brainstorming
- Direct Instruction
- Focused Study
- Group Discussion
- Hands-On Learning
- Housekeeping
- Physical Activities
- Practicing Autonomy
- Presenting or Performing
- Reserach & Reflection
- Transition

LISTENING TOUR

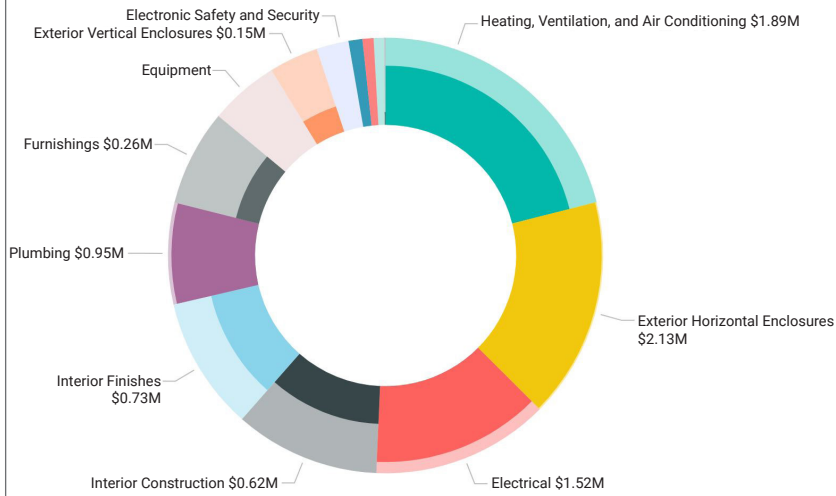
What's a Listening Tour?

Staff surveys (Listening Tours) were sent to each school where faculty gave input about the strengths and weaknesses of the building. The following comments highlight common themes and concerns.

Listening Tour Comments

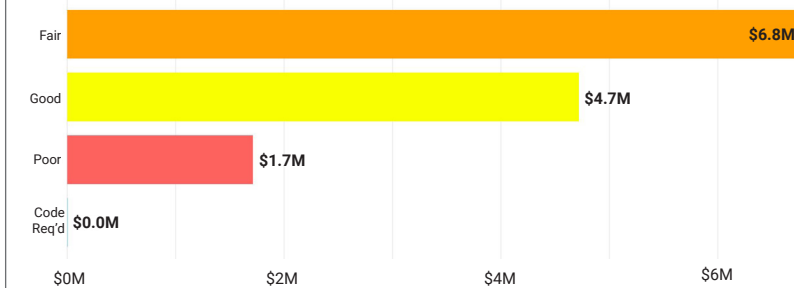
- The large, shared office space is nice, but could use a place to lock belongings and partitions that stay standing.
- Parking and athletic fields are great.
- More space to meet with parents privately would be great for a variety of teacher/staff needs.
- The storage cabinets in the classroom are good.
- The classroom sizes are reasonable for the amount of students.

FACILITY BY BUILDING SYSTEM



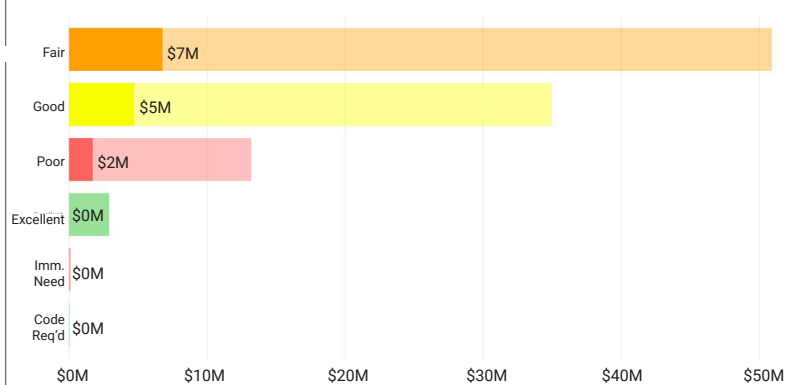
This chart indicates the approximate cost of deferred and anticipated maintenance (in dollars) of items assessed by building system. Highlighted items indicate those items in immediate need, code requirement, poor and fair condition.

FACILITY BY CONDITION



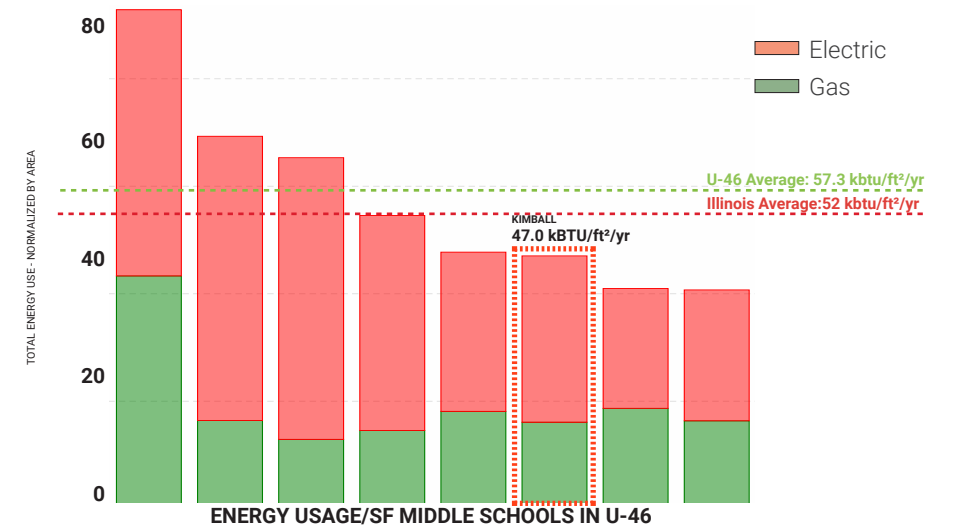
This chart indicates the approximate cost of deferred and anticipated maintenance (in dollars) based on condition of assessed items.

FACILITY AS PART OF TOTAL COHORT



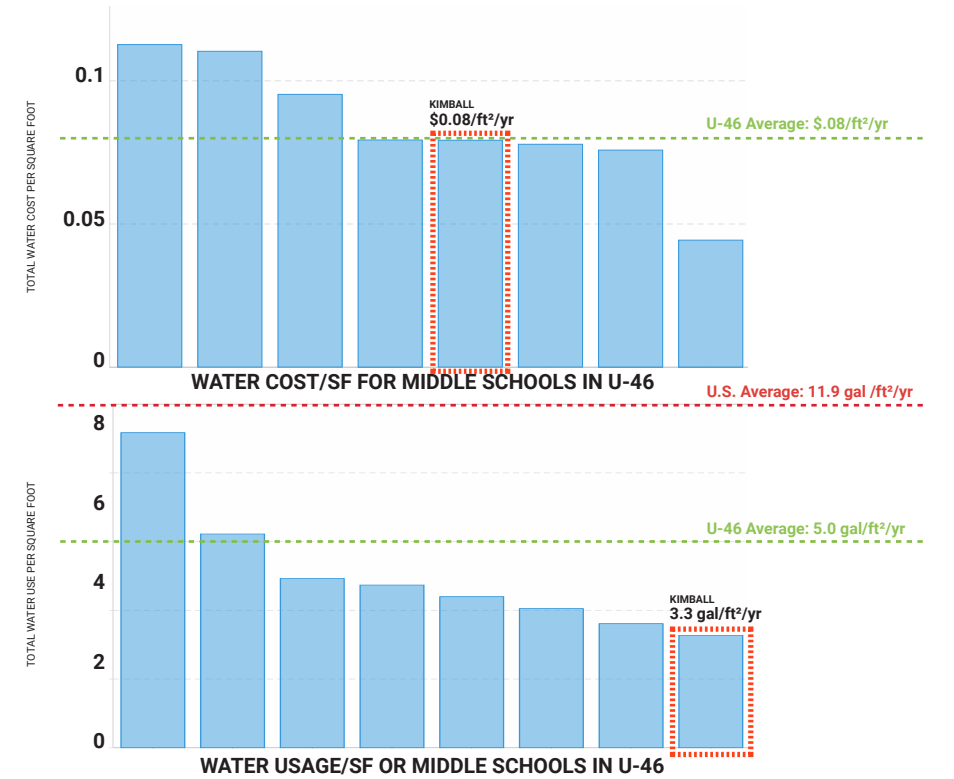
This chart indicates the approximate cost of deferred and anticipated maintenance (in dollars) based on condition of assessed items in relation to the entire cohort of buildings.

ENERGY USAGE (EUI)



Energy Use Intensity (EUI) is a key metric that expresses a building's energy use as a function of its size. Generally, a low EUI signifies good energy performance

WATER USAGE + WATER COST



Water usage is a key metric that expresses a school's water use and total cost of water in comparison to the other middle schools in the district.

DATA COLLECTION

How is this information collected?

The goal of the DLR Group integrated design team is to **collect multiple qualitative and quantitative data points** around the same set of items – for example energy use or learning behavior – **in order to form a holistic picture**. The team collects these data points through the use of utility analysis, expert walkthroughs, focus groups, surveys, and ethnographic observation techniques. The results are validated by cross-checking data points, such as a survey answer and a spot measurement, that should relate to one another.