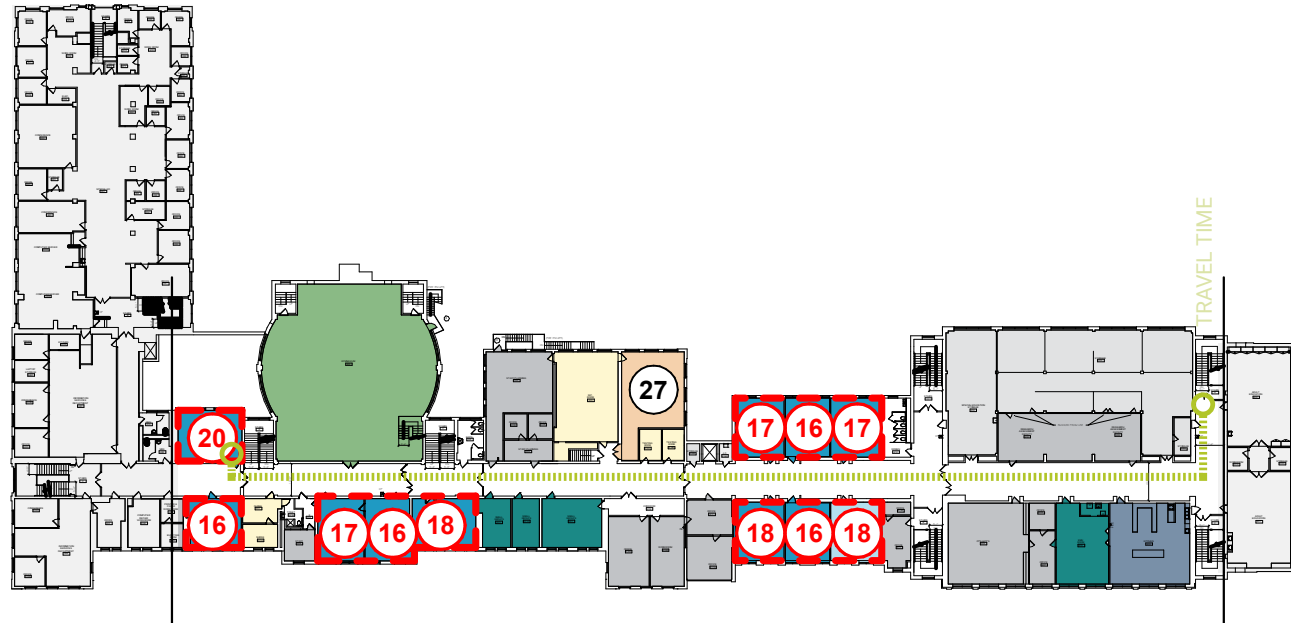


# U46 Central School Programs

355 East Chicago St, Elgin, IL 60120

BUILDING SUMMARY			
Gross SF	223,214	Number of Levels	5
Year Built	1880	Number of Additions	3

\*Building shared with DREAM Academy



LEVEL 4



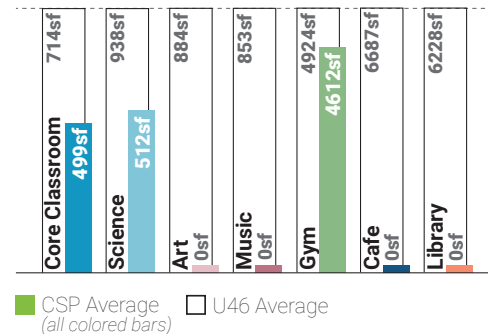
## ENROLLMENT METRICS

Occupancy**	279
Effective Capacity	189
Total Enrollment	118

**Occupancy:** the maximum number of people that can be housed in a space in accordance with the building/fire code  
**\*\*NOTE:** Occupancy is NOT the recommended number of students for a space, it is the maximum allowed by code.

**Effective Capacity:** the amount of students a school can effectively support based on the District's current practices and future vision for teaching and learning. This is calculated based on ISBE's square footage per student guideline.  
**Enrollment:** current number of students attending the facility.

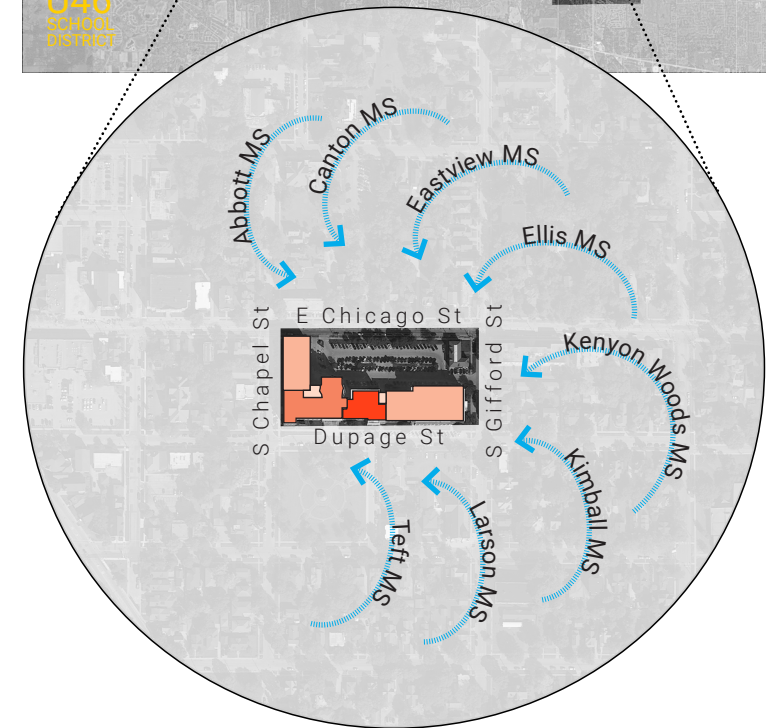
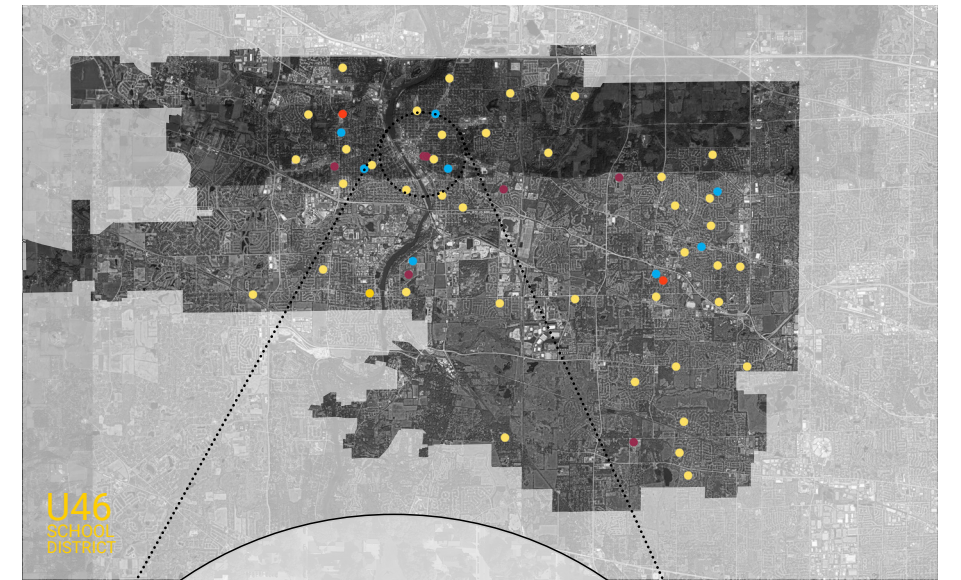
## AREA COMPARISON



\* This comparison notes the difference between Central School Programs area per student in comparison to the current National average as noted in the 2015 School Construction Report. The master planning process will produce outcomes pertinent to the District as a whole. This is just one metric to compare space.

**332** square feet per student • **148** square feet per student  
 Central School Programs • 2015 National Low Quartile Number\*

## FACILITY LOCATION



1880  
 1909  
 1937  
 1984

## TRAVEL

**3-5 MIN** Furthest approximate travel time from one location to another for an average High School Student.

## PLAN KEY

- Administration
- Building Support
- Cafe Support
- Commons / Cafeteria
- Core Classroom
- Elective Classroom
- Gym / Fitness
- Learning Center
- Media Lab
- Performance Venue
- Performing Arts Classroom
- Resources
- Science Lab
- Special Education
- Stem / Hands-On Learning
- Restrooms
- Student Support
- Visual Arts
- Travel Path
- Under-sized space

FACILITY GRADES

**Spatial Educational Adequacy(25%) D**

(Data collected through Staff Survey)	<b>5.0/10</b>
Physical Features	5.8/10
Environment Supports Variety	6.0/10
Visual Stimulation	5.6/10
Future Readiness	2.7/10

**Building Allocation(25%) B**

Gross SF/student	332
Site Acreage/Guideline	41%
Mobiles in Use/Basement Used	No/No

**Facility Condition(35%) F\***

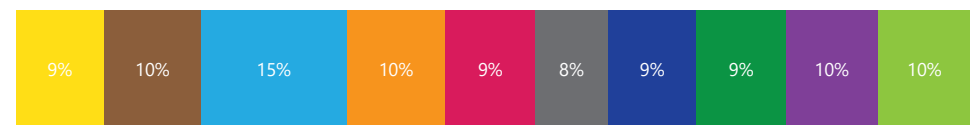
FCI	.73
<b>Water Usage(5%)</b>	--
Gallons/SF	--
<b>Energy Usage(10%)</b>	--
<b>Total EUI</b>	--
Electric	--
Gas	--

**AGGREGATED FACILITY GRADE D**

Educational Adequacy grades were determined by a survey issued to staff. Square Foot/Student grades were determined by building area and enrollment. Facility grades are determined building assessments. Water grades were determined by comparing utility data to the Commercial Buildings Energy Consumption Survey. Energy grades were determined by comparing utility data to the US Dept of Energy's Building Performance Database. Percent in parenthesis indicates weight of category in aggregate facility grade.  
\*Assessments were completed on educational portion of building only.

ACTIVITY MAPPING

Observing representative classrooms within the school through a typical day allows the design team to quantify how learning spaces are used. Measurements are averaged from all classrooms visited.



- Creative Brainstorming
- Hands-On Learning
- Presenting or Performing
- Direct Instruction
- Housekeeping
- Reserach & Reflection
- Focused Study
- Physical Activities
- Transition
- Group Discussion
- Practicing Autonomy

LISTENING TOUR

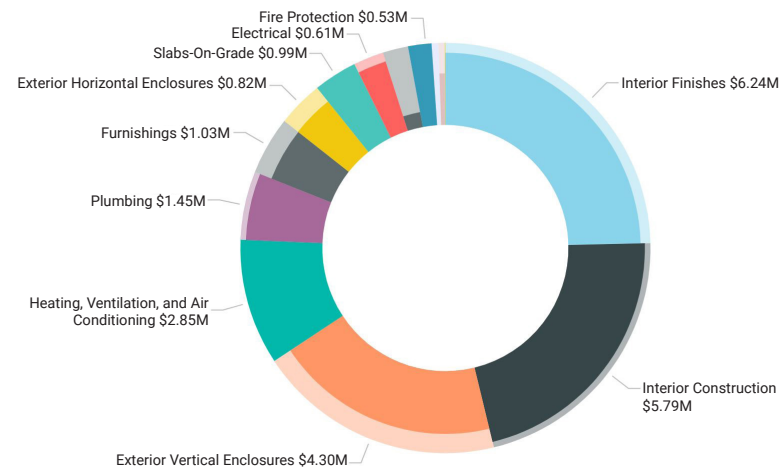
**What's a Listening Tour?**

Staff surveys (Listening Tours) were sent to each school where faculty gave input about the strengths and weaknesses of the building. The following five comments highlight common themes and concerns.

**Listening Tour Comments From Staff**

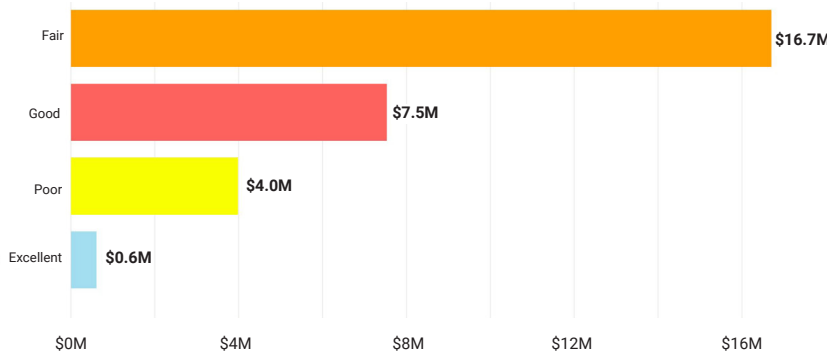
- There is a lack of intervention spaces.
- The sensory rooms are the best space in the building.
- Signage throughout the building is poor.
- The main office needs cosmetic work. The building needs fresh painting and cleaning throughout.
- As Central Schools Program expands, there are no additional classrooms to house students and staff.

FACILITY BY BUILDING SYSTEM



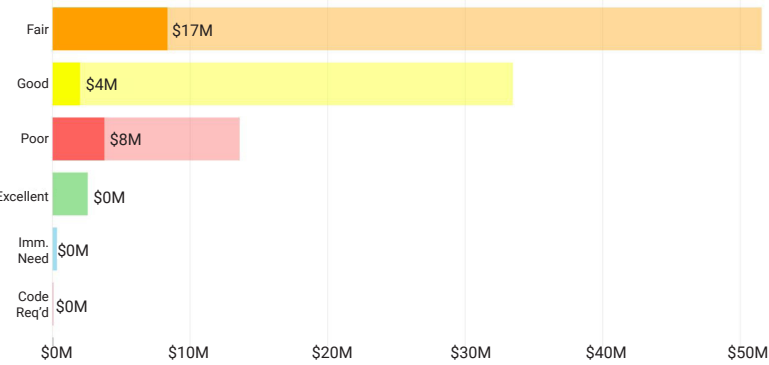
\*Graphics indicated for Central Schools and DREAM Academy are the same due to assessment process.  
This chart indicates the approximate cost of deferred and anticipated maintenance (in dollars) of items assessed by building system. Highlighted items indicate those items in immediate need, code requirement, poor and fair condition.

FACILITY BY CONDITION



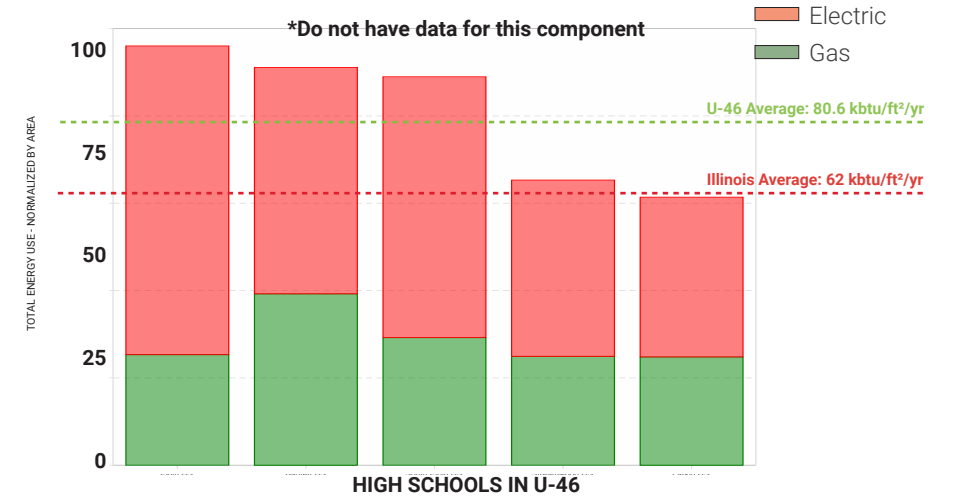
\*Graphics indicated for Central Schools and DREAM Academy are the same due to assessment process.  
This chart indicates the approximate cost of deferred and anticipated maintenance (in dollars) based on condition of assessed items.

FACILITY AS PART OF TOTAL COHORT



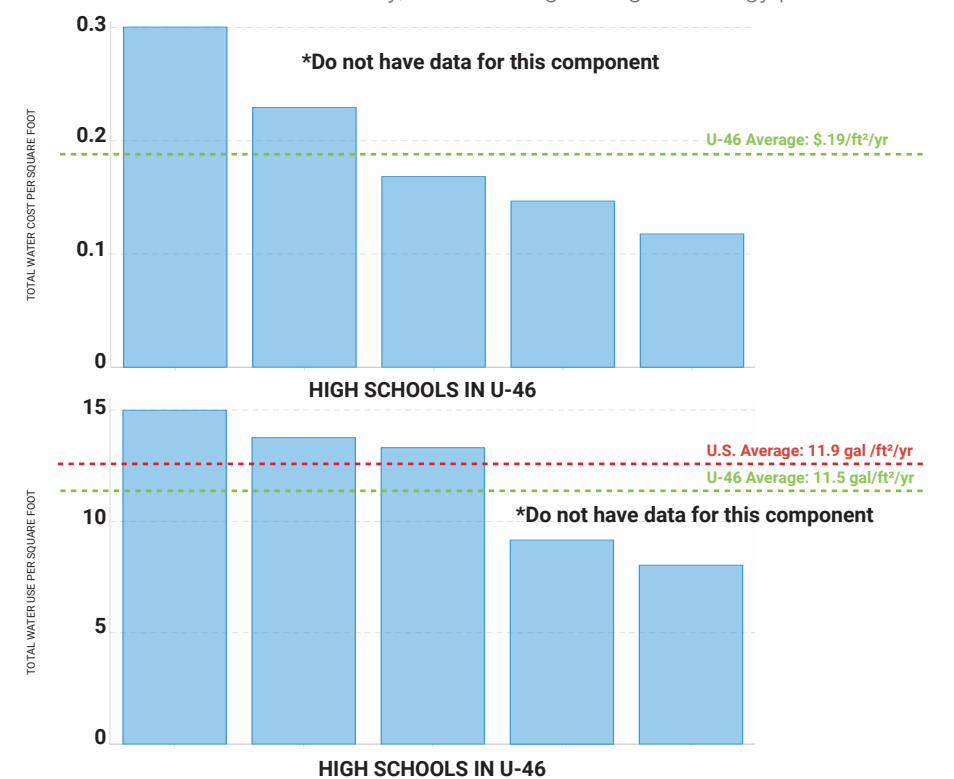
\*Graphics indicated for Central Schools and DREAM Academy are the same due to assessment process.  
This chart indicates the approximate cost of deferred and anticipated maintenance (in dollars) based on condition of assessed items in relation to the entire cohort of buildings.

ENERGY USAGE (EUI)



Energy Use Intensity (EUI) is a key metric that expresses a building's energy use as a function of its size. Generally, a low EUI signifies good energy performance

WATER USAGE + WATER COST



Water usage is a key metric that expresses a school's water use and total cost of water in comparison to the other elementary schools in the district.

DATA COLLECTION

**How is this information collected?**

The goal of the DLR Group integrated design team is to **collect multiple qualitative and quantitative data points** around the same set of items – for example energy use, air quality, or learning behavior – **in order to form a holistic picture**. The team collects these data points through the use of sensors (in the space for 1-7 days), spot measurement equipment, expert walkthroughs, focus groups, surveys, and ethnographic observation techniques. The results are validated by cross-checking data points, such as a survey answer and a spot measurement, that should relate to one another.