



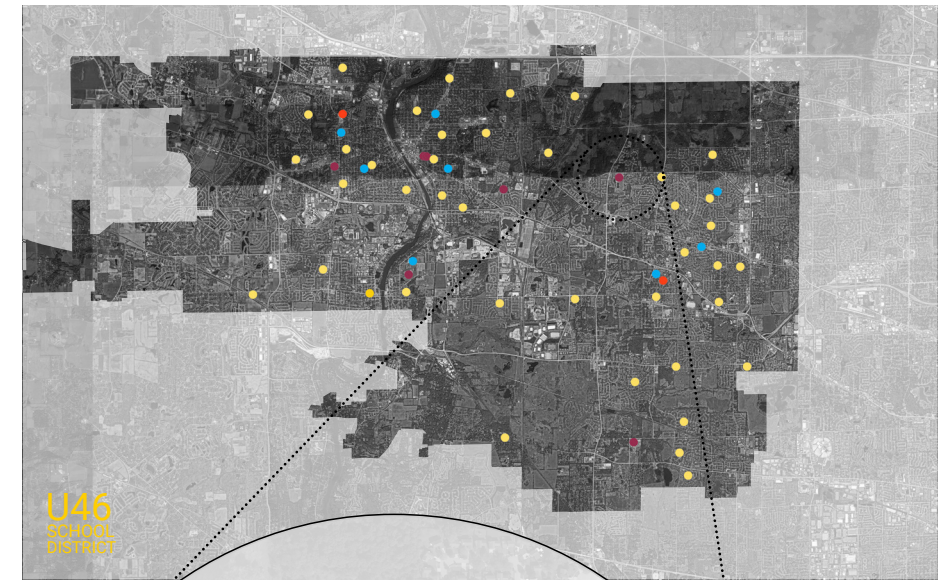
# Streamwood High School

701 W. Schaumburg Road, Streamwood, IL 60107

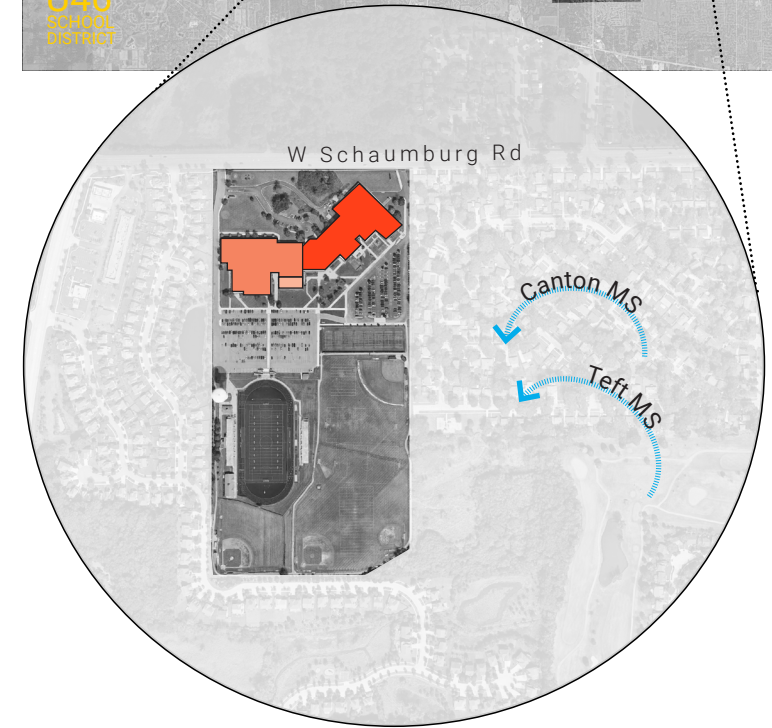
BUILDING SUMMARY			
Gross SF	308,081	Number of Levels	3
Year Built	1978	Number of Additions	2



FACILITY LOCATION



U46  
SCHOOL DISTRICT



**Current**  
Acreage:  
**52.43**  
ACRES

**Guideline**  
Acreage:  
**38.29**  
ACRES

\* Guideline Acreage recommended by State of Illinois = 5 acres plus 1 acre per every 100 students

1978  
1982  
2002

TRAVEL

**6-8 MIN** Furthest approximate travel time from one location to another for an average **High School Student**.

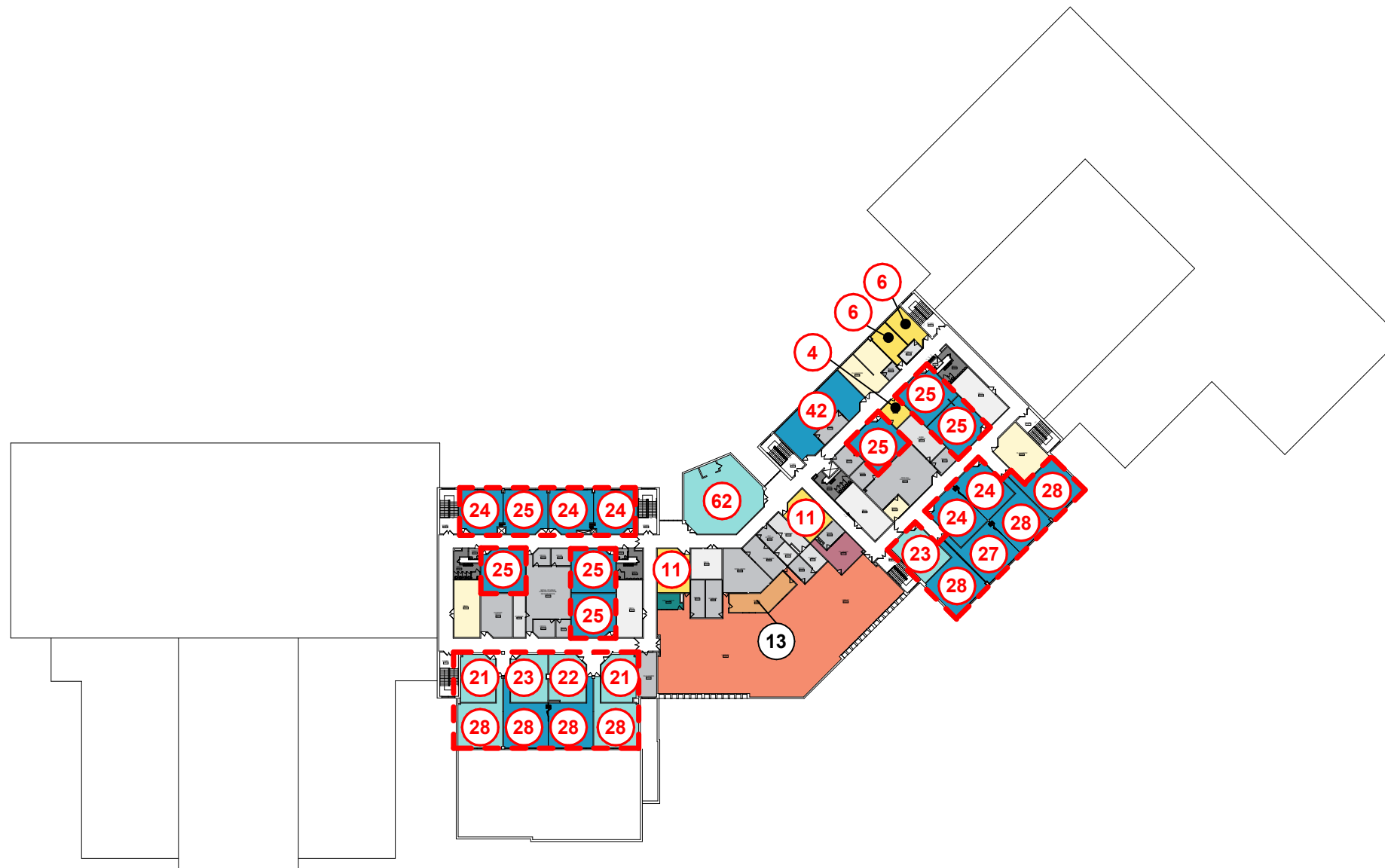
PLAN KEY

- Administration
- Performance Venue
- Travel Path
- Building Support
- Performing Arts Classroom
- Under-sized space
- Cafe Support
- Resources
- Core Classroom
- Science Lab
- Room Capacity based on ISBE Guidelines
- Elective Classroom
- Special Education
- Room Capacity based on ISBE Guidelines (not included in Effective Capacity)
- Gym / Fitness
- Stem / Hands-On Learning
- Restrooms
- Kindergarten /ECC
- Student Support
- Learning Center
- Visual Arts
- Media Lab



# Streamwood High School

701 W. Schaumburg Road, Streamwood, IL 60107



LEVEL 3

Phase 1 Snapshot

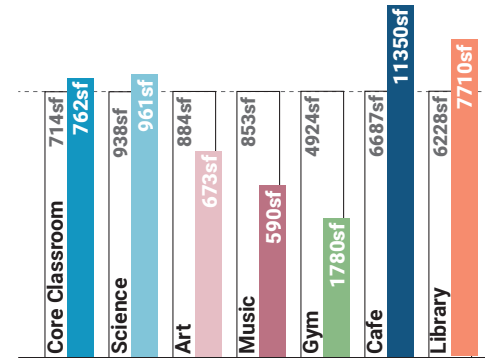
## ENROLLMENT METRICS

Occupancy**	2415
Effective Capacity	TBD
Total Enrollment	1829

**Occupancy:** the maximum number of people that can be housed in a space in accordance with the building/ fire code  
**\*\*NOTE:** Occupancy is NOT the recommended number of students for a space, it is the maximum allowed by code.

**Effective Capacity:** the amount of students a school can effectively support based on the District's current practices and future vision for teaching and learning. This is calculated based on ISBE's square footage per student guideline. Calculated based on core classrooms, science labs and Special Education spaces.  
**Enrollment:** number of students that attended the facility in 2019-2020.

## AREA COMPARISON



\* This comparison notes the difference between Streamwood High School area per student in comparison to the current National average as noted in the 2015 School Construction Report. The master planning process will produce outcomes pertinent to the District as a whole. This is just one metric to compare space.

■ SHS Average (all colored bars) □ U-46 Average

**168** square feet per student  
Streamwood High School

**148** square feet per student  
2015 National Low Quartile Number\*

## PLAN KEY

- Administration
- Building Support
- Cafe Support
- Commons / Cafeteria
- Core Classroom
- Elective Classroom
- Gym / Fitness
- Kindergarten / ECC
- Learning Center
- Media Lab
- Performance Venue
- Performing Arts Classroom
- Resources
- Science Lab
- Special Education
- Stem / Hands-On Learning
- Restrooms
- Student Support
- Visual Arts
- Travel Path
- Under-sized space
- Room Capacity based on ISBE Guidelines (10)
- Room Capacity based on ISBE Guidelines (not included in Effective Capacity) (10)



January 27, 2021

FACILITY GRADES

**Spatial Educational Adequacy(25%) C**

(Data collected through Staff Survey)	<b>6.6/10</b>
Physical Features	7.0/10
Environment Supports Variety	8.4/10
Visual Stimulation	5.3/10
Future Readiness	5.2/10

**Building Allocation(25%) A**

Gross SF/student	168
Site Acreage/Guideline	137%
Mobiles in Use/Basement Used	No/No

**Facility Condition(35%) C**

FCI	.19
<b>Water Usage(5%) B</b>	
Gallons/SF	9.3

**Energy Usage(10%) D**

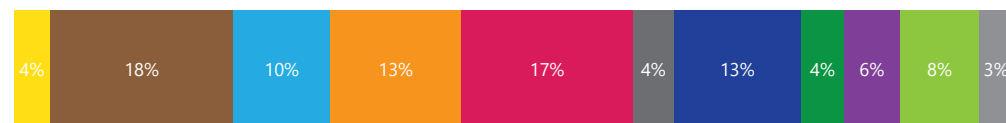
<b>Total EUI</b>	<b>65.3kBTU/SF/yr</b>
Electric	24.9kBTU/SF/yr
Gas	40.4kBTU/SF/yr

**AGGREGATED FACILITY GRADE B-**

Educational Adequacy grades were determined by a survey issued to staff. Square Foot/Student grades were determined by building area and enrollment. Facility grades are determined building assessments. Water grades were determined by comparing utility data to the Commercial Buildings Energy Consumption Survey. Energy grades were determined by comparing utility data to the US Dept of Energy's Building Performance Database. Percent in parenthesis indicates weight of category in aggregate facility grade.

ACTIVITY MAPPING

Activity mapping is based on survey data (Week in the Life) collected by teachers throughout the district over the course of one week. The teachers provided the learning activity and amount of time spent in that activity. Data was aggregated for the school and is represented by the average percent of time spent in the activity.



- Creative Brainstorming
- Direct Instruction
- Focused Study
- Group Discussion
- Hands-On Learning
- Housekeeping
- Physical Activities
- Practicing Autonomy
- Presenting or Performing
- Reserach & Reflection
- Transition

LISTENING TOUR

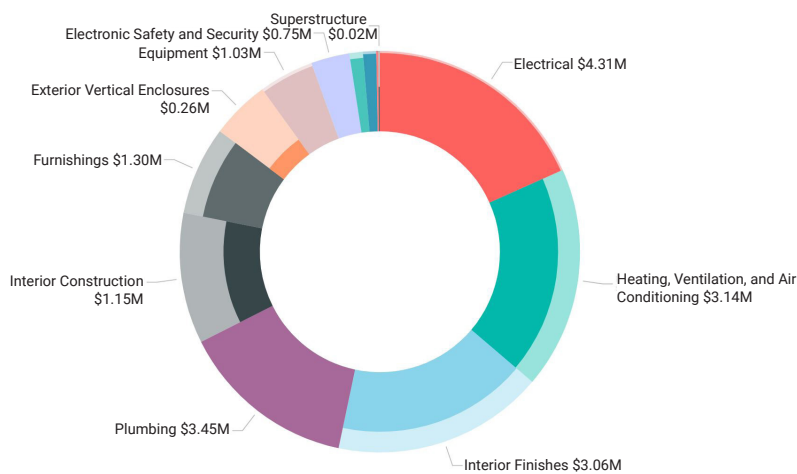
**What's a Listening Tour?**

Staff surveys (Listening Tours) were sent to each school where faculty gave input about the strengths and weaknesses of the building. The following comments highlight common themes and concerns.

**Listening Tour Comments From Staff**

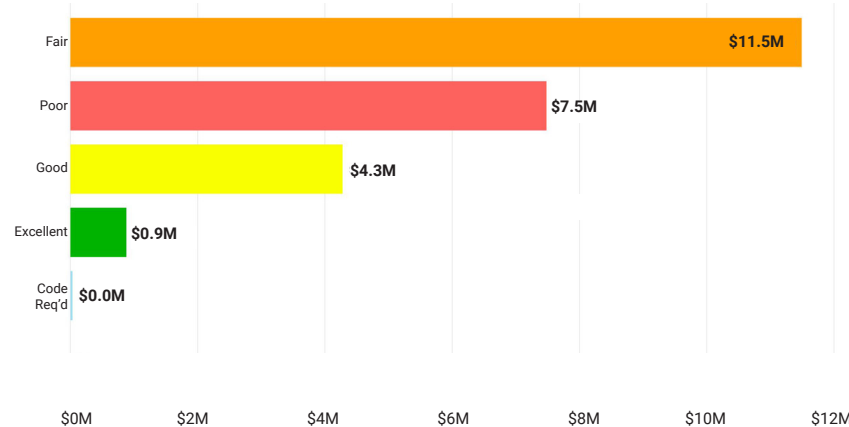
- The library and weight room are great spaces within the school - very clean and well-maintained.
- Better climate control is needed for the music wing. Many instruments are affected by changes in temperature and humidity. Additionally, the theatre is in major need of renovation for audio and acoustic settings. More performing arts storage is needed too.
- Classrooms have too many desks for functional groupwork/lessons. Desks are also too heavy/bulky for collaboration and flexible lessons.
- Students have no quiet place to go. The lunchroom is too chaotic and they need a pass to go to the library to work on something specific.
- Temperatures vary too much throughout the building.

FACILITY BY BUILDING SYSTEM



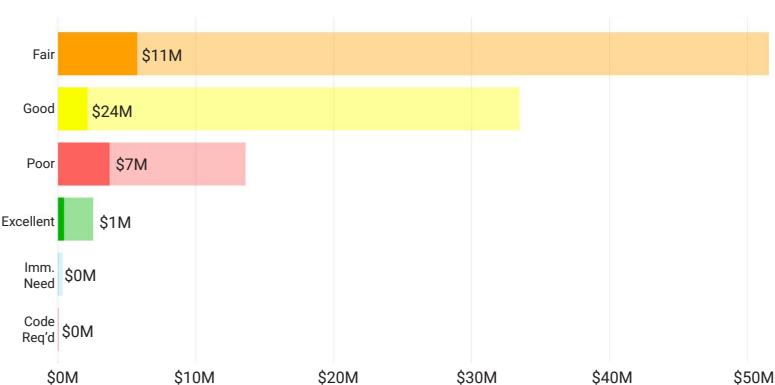
This chart indicates the approximate cost of deferred and anticipated maintenance (in dollars) of items assessed by building system. Highlighted items indicate those items in immediate need, code requirement, poor and fair condition.

FACILITY BY CONDITION



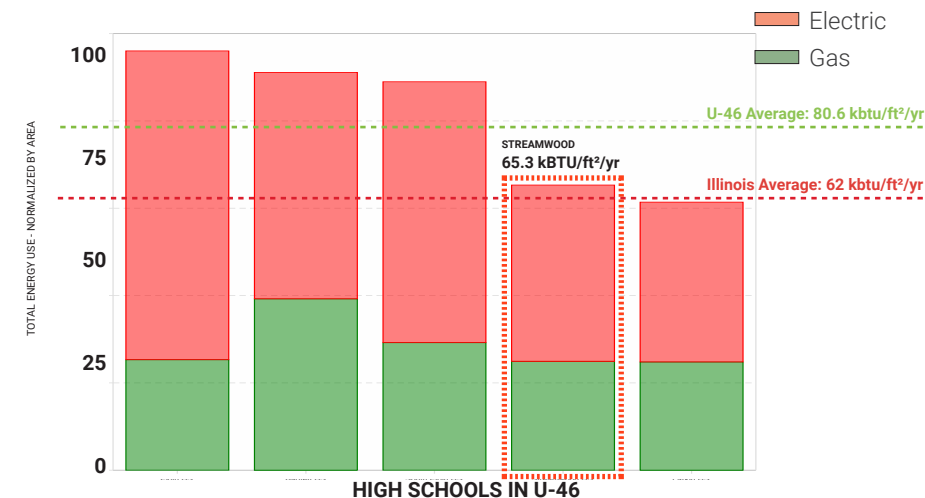
This chart indicates the approximate cost of deferred and anticipated maintenance (in dollars) based on condition of assessed items.

FACILITY AS PART OF TOTAL COHORT



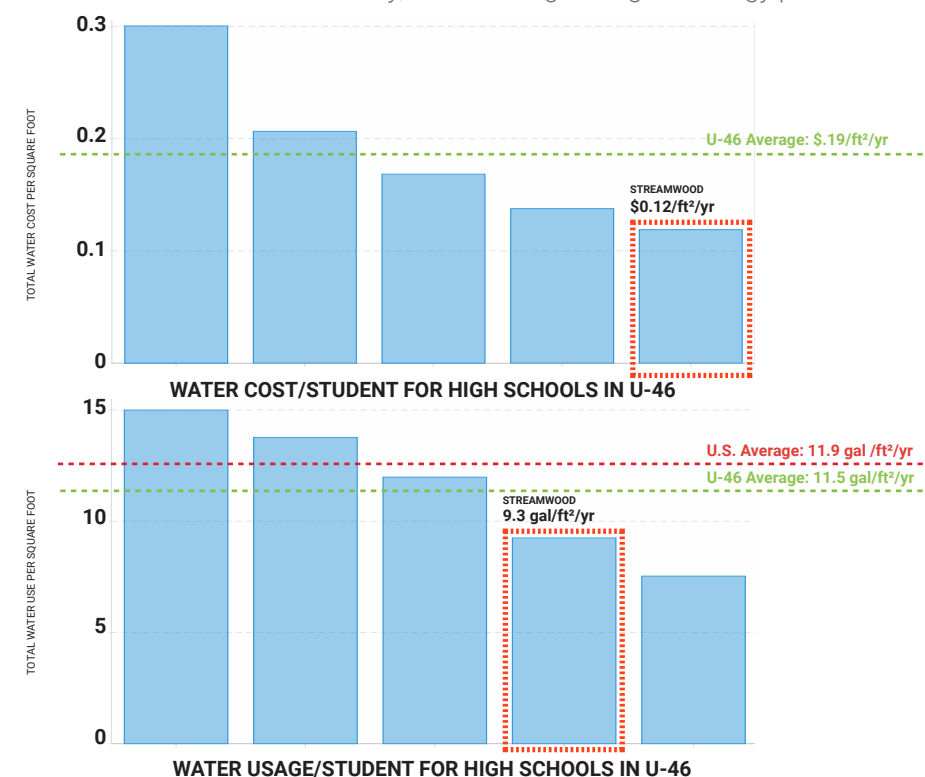
This chart indicates the approximate cost of deferred and anticipated maintenance (in dollars) based on condition of assessed items in relation to the entire cohort of buildings.

ENERGY USAGE (EUI)



Energy Use Intensity (EUI) is a key metric that expresses a building's energy use as a function of its size. Generally, a low EUI signifies good energy performance

WATER USAGE + WATER COST



Water usage is a key metric that expresses a school's water use and total cost of water in comparison to the other high schools in the district.

DATA COLLECTION

**How is this information collected?**

The goal of the DLR Group integrated design team is to **collect multiple qualitative and quantitative data points** around the same set of items – for example energy use or learning behavior – **in order to form a holistic picture**. The team collects these data points through the use of utility analysis, expert walkthroughs, focus groups, surveys, and ethnographic observation techniques. The results are validated by cross-checking data points, such as a survey answer and a spot measurement, that should relate to one another.